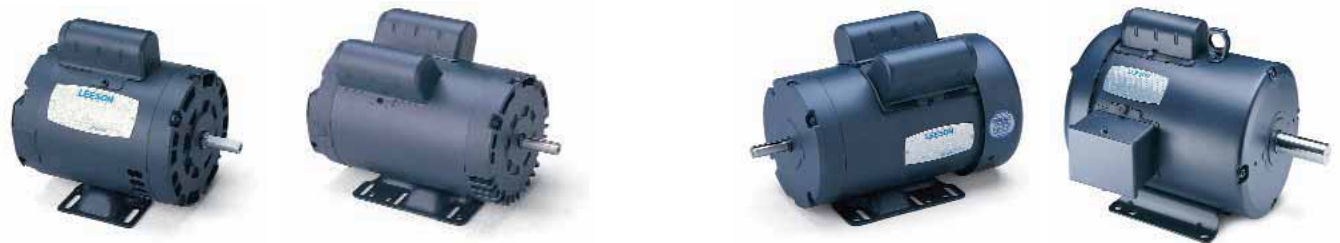




SINGLE PHASE MOTORS

RIGID BASE • CAPACITOR START • GENERAL PURPOSE



DRIP-PROOF

HP	RPM 60 Hz	NEMA Frame	Catalog Number	Disc. Sym.	App. Wgt. (lbs.)	Voltage	Over- load Prot.	F.L. Amps 230V	"C" Dim. (Inches)
1/12	1725
1/8	1725
1/6	1725
	1725
1/4	1140
	3450
	1725
	1725	48	101423	A	16	115/208-230	Man.	2.7	8.87
	1725	48	100115	A	16	115/208-230	Auto.	2.7	8.87
	1725	S56	100000	A	17	115/208-230	Auto.	2.7	9.24
1/3	1140
	1140
	3450
	3450	S56	100336	A	26	115/208-230	None	2.8	8.99
	1725
	1725
	1725	48	100116	A	17	115/208-230	Auto.	3.3	8.87
	1725	S56	100006	A	18	115/208-230	None	3.3	9.24
	1725	S56	100588	A	18	115/208-230	Man.	3.3	9.24
	1725	S56	100001	A	18	115/208-230	Auto.	3.3	9.24
1/2	1140
	1140	56	110001	A	29	115/208-230	None	3.9	10.88
	3450	48	100184	A	19	115/208-230	None	3.4	9.62
	3450	S56	100337	A	20	115/208-230	None	3.4	9.99
	3450	S56	100052	A	21	115/208-230	Man.	3.4	9.99
	1725	48	100338	A	20	115/208-230	None	4.4	9.62
	1725	S56	100007	A	21	115/208-230	None	4.4	9.99
	1725	S56	100004	A	21	115/208-230	Man.	4.4	9.99
	1725	S56	100002	A	20	115/208-230	Auto.	4.4	9.99
	1140	56	110002	A	32	115/208-230	None	5.0	11.38
3/4	3450	S56	100340	A	24	115/208-230	None	4.9	10.49
	3450	S56	100053	A	24	115/208-230	Man.	4.9	10.49
	1725	S56	100008	A	26	115/208-230	None	5.4	10.99
	1725	S56	100005	A	25	115/208-230	Man.	5.4	10.99
	1725	S56	101544☆	A	28	115/208-230	Man.	4.0	11.24
	1725	S56	100003	A	25	115/208-230	Auto.	5.4	10.99
	1140	56H	110003□	A	44	115/208-230	None	6.4	12.88
	1	3450	56	110360	A	28	115/208-230	None	6.0
3450		56	110097	A	28	115/208-230	Man.	6.0	10.84
1725		56	110004	A	28	115/208-230	None	6.4	10.88
1725		56	110167	A	30	115/208-230	Man.	6.4	10.88
1725		56	113630☆	A	31	115/208-230	Man.	5.3	10.88
1725		56	110000	A	28	115/208-230	Auto.	6.4	10.88
1725		143T	120044	B	38	115/208-230	None	6.4	11.13
1725		143T	120003	B	33	115/208-230	Man.	6.4	11.13
1725		143T	120000	B	32	115/208-230	Auto.	6.4	11.13
1140	

TOTALLY ENCLOSED FAN COOLED (TEFC)

NEMA Frame	Catalog Number	Disc. Sym.	App. Wgt. (lbs.)	Voltage	Over- load Prot.	F.L. Amps 230V	"C" Dim. (Inches)
42	092111	A	14	115/208-230	None	1.1	8.94
42	092114	A	16	115/208-230	None	1.6	9.44
42	092116	A	17	115/208-230	None	2.1	9.44
48	102012	A	17	115/208-230	None	2.0	9.06
48	102013	A	23	115/208-230	None	1.9	10.31
42	092112	A	19	115/208-230	None	2.1	9.94
48	102014	A	20	115/208-230	None	2.7	9.06
48	101446♣	A	18	115/208-230	Man.	2.7	9.06
...
48	102015	A	23	115/208-230	None	3.2	11.31
56	114617	A	30	115/208-230	None	2.8	11.81
48	102016	A	21	115/208-230	None	2.8	9.06
...
48	100955	A	19	115/208-230	None	3.3	9.56
48	102018	A	20	115/208-230	Man.	3.3	9.56
...
S56	102931♣	A	23	115/208-230	None	3.1	10.44
S56	102933	A	23	115/208-230	Man.	3.1	10.44
S56	102932	A	23	115/208-230	Auto.	3.1	10.44
48	102019	A	28	115/208-230	None	3.1	11.56
56	110009	A	34	115/208-230	None	3.6	12.31
48	102020	A	27	115/208-230	None	3.5	9.31
S56	102905	A	22	115/208-230	None	3.5	9.94
S56	102904	A	25	115/208-230	Man.	3.5	9.94
48	100956	A	22	115/208-230	None	4.0	10.31
S56	102906♣	A	22	115/208-230	None	4.0	10.69
S56	102909♣	A	22	115/208-230	Man.	4.0	10.69
S56	102908♣	A	24.5	115/208-230	Auto.	4.0	10.69
56	110011	A	38	115/208-230	None	4.9	12.81
56	110276	A	26	115/208-230	None	5.0	11.31
56	110108	A	26	115/208-230	Man.	5.0	11.31
56	110013♣	A	29	115/208-230	None	5.4	11.31
56	110022♣	A	29	115/208-230	Man.	5.4	11.31
...
56	110017♣	A	26	115/208-230	Auto.	5.4	11.31
56H	110400☆□	A	43	115/208-230	None	5.3	13.31
56	110059	A	28	115/208-230	None	6.0	11.81
56	110142	A	28	115/208-230	Man.	6.0	11.81
56	110209♣	A	30	115/208-230	None	7.0	11.81
56	110023♣	A	29	115/208-230	Man.	6.4	11.81
...
56	110018♣	A	29	115/208-230	Auto.	6.4	12.31
143T	120025♣	B	34	115/208-230	None	6.4	12.75
143T	120008♣	B	31	115/208-230	Man.	6.4	12.75
...
145T	120043☆	B	49	115/230	None	6.7	14.25

Except as noted by ♣ motors on this page have NEMA Service Factors—see page 308 for details.

□ Combination 56H base motors have mounting holes for NEMA 56 and NEMA 143-5T and a standard NEMA 56 shaft.
 ☆ Capacitor start/capacitor run design for reduced amperage, others are capacitor start/induction run.
 ♣ These totally enclosed single phase motors have 1.15 Service Factors.

CONTINUED ON NEXT PAGE

SINGLE PHASE MOTORS
RIGID BASE • CAPACITOR START • GENERAL PURPOSE



Rigid Base

DRIP-PROOF

HP	RPM 60 Hz	NEMA Frame	Catalog Number	Disc. Sym.	App. Wgt. (lbs.)	Voltage	Over- load Prot.	F.L. Amps 230V	"C" Dim. (Inches)	
1½	3450	56	110361	A	29	115/208-230	None	8.2	10.84	
	3450	56	110110	A	28	115/208-230	Man.	8.2	10.84	
	3450	56	113631☆	A	36	115/208-230	Man.	6.2	11.34	
	3450	143T	120107	B	32	115/208-230	None	8.2	11.28	
	1725	56H	110005☆□	A	37	115/208-230	None	8.6	11.84	
	1725	56H	110006☆□	A	38	115/208-230	Man.	8.6	11.84	
	1725	56H	113266☆□	A	42	115/208-230	Man.	6.7	12.38	
	1725	
	1725	145T	120042☆	B	38	115/208-230	None	8.6	12.28	
	1725	145T	120004☆	B	40	115/208-230	Man.	8.6	12.28	
	1725	145T	120001☆	B	40	115/208-230	Auto.	8.6	12.28	
	1140	
2	3450	56	110363	A	37	115/208-230	None	10.0	11.84	
	3450	56	110362	A	38	115/208-230	Man.	10.0	12.34	
	3450	56	113632☆	A	38	115/208-230	Man.	8.6	11.34	
	3450	145T	120106	B	40	115/208-230	None	10.0	12.28	
	3450	
	1725	56H	116704□☆	A	45	115/208-230	Man.	8.6	12.88	
	1725	145T	120067☆	B	42	115/230	None	10.5	13.28	
	1725	145T	120879☆	A	51	115/208-230	Man.	8.6	13.31	
	1725	182T	131515	B	56	115/208-230	None	12.4	13.19	
	1725	182T	131536	B	63	115/208-230	Man.	12.4	13.19	
	1725	182T	131535	B	63	115/208-230	Auto.	12.4	13.19	
	1140	
3	3450	56H	116706□☆	A	39	230	Man.	15.0	12.38	
	3450	
	3450	182T	131636	B	74	115/208-230	None	14.0	14.18	
	1725	184T	131534	B	69	115/230	None	16.9	14.19	
	1725	184T	131561	B	76	115/230	Man.	16.9	14.19	
	1725	184T	131851☆	B	72	208-230	Man.	13.7	15.22	
	1725	184T	131530	B	69	115/230	Auto.	16.9	14.19	
	1140	
	5	3450	56H	116708□☆	A	45	230	Man.	20.8	13.34
		3450	184T	131616	B	84	208-230	None	22.0	14.69
		3450
		1725	184T	131537☆	B	83	208-230	None	21.0	14.69
1725		184T	131560☆	B	82	208	None	23.2	14.69	
1725		184T	131622☆	B	82	208-230	Man.	21.0	14.69	
1140		
7½		3450	184T	132044☆	B	110	208-230	Tstat	31.0	16.69
		3450	213T	140680☆	B	112	208-230	None	29.5	16.55
		1740	215T	140155☆	B	113	230	None	36.0	17.26
10		3450	215T	140681☆	B	135	208-230	None	37.0	18.05
		1740	215TZ	140311☆✓	B	140	230	None	43.0	19.76

TOTALLY ENCLOSED FAN COOLED (TEFC)

NEMA Frame	Catalog Number	Disc. Sym.	App. Wgt. (lbs.)	Voltage	Over- load Prot.	F.L. Amps 230V	"C" Dim. (Inches)
56	110094	A	31.5	115/208-230	None	8.5	12.31
56	110109	A	31	115/208-230	Man.	8.5	12.31
...
143T	120130	B	36	115/208-230	None	8.5	13.25
56H	110253☆□	A	38	115/208-230	None	8.6	12.81
56H	113333☆□	A	38	115/208-230	Man.	8.6	12.81
...
56H	110019☆□	A	38	115/208-230	Auto.	8.6	12.81
145T	120026☆	B	44	115/208-230	None	8.6	13.25
145T	120009☆	B	42	115/208-230	Man.	8.6	13.25
...
184T	131526	B	69	115/208-230	None	11.0	15.46
56H	110352☆□†	A	41	115/208-230	None	10.0	13.31
56H	110402☆□†	A	41	115/208-230	Man.	10.0	13.31
...
145T	120036☆†	B	42	115/208-230	None	10.0	13.75
145T	120395☆†	B	44	115/208-230	Man.	10.0	13.75
...
145T	121507†☆	B	48	115/208-230	None	9.2	13.75
145T	120867☆	B	48	115/208-230	Man.	9.2	13.75
182T	131509	B	65	115/208-230	None	12.4	14.46
...
215T	140747☆	B	118	115/208-230	None	11.2	18.71
56H	116705□☆	A	53	208-230	Man.	14.0	13.81
145T	120341☆	B	46	230	None	13.0	14.25
182T	131637	B	78	115/208-230	None	13.4	14.96
184T	131533	B	83	115/230	None	16.8	16.46
184T	131855☆	B	88	230	Man.	13.6	14.96
...
...
184T	131549☆	B	93	230	None	19.8	16.96
184T	132042☆	B	103	230	Man.	19.8	16.97
184T	131538☆	B	95	230	None	23.0	17.46
...
184T	131856☆	B	95	230	Man.	21.0	15.96
...
213T	140684☆	B	120	208-230	None	32.0	18.34
215T	140120☆	B	169	230	None	33.6	20.21
215T	140685☆	B	138	208-230	None	41.5	19.84
215T	140581☆	B	202	230	None	40.0	20.71

- Combination 56H base motors have mounting holes for NEMA 56 and NEMA 143-5T and a standard NEMA 56 shaft.
- ☆ Capacitor start/capacitor run design for reduced amperage, others are capacitor start/induction run.
- ✓ Motor with standard diameter shaft, 1.0" longer than standard.
- † Class F insulated.
- ✦ These totally enclosed single phase motors have 1.15 Service Factors.

All 180 and 210 frame Rolled Steel motors have Class F Insulation.

QUICK REFERENCE

SINGLE PHASE AGRICULTURAL MOTORS	Page 68
SINGLE PHASE C FACE MOTORS	22
SINGLE PHASE WASHGUARD MOTORS	30, 35 & 37



C FACE MOTORS • SINGLE PHASE

LESS BASE • CAPACITOR START • GENERAL PURPOSE



DRIP-PROOF • C FACE LESS BASE • SINGLE PHASE

HP	RPM 60 Hz	NEMA Frame	Catalog Number	Disc. Sym.	App. Wgt. (lbs.)	Voltage	Over- load Prot.	F.L. Amps 230V	"C" Dim. (Inches)	
1/6	1725	
1/4	1725	
	1725	S56C	100023	A	17	115/208-230	None	2.7	9.24	
	1725	S56C	101521	A	17	115/208-230	Auto.	2.7	9.24	
1/3	3450	S56C	100354	A	17	115/208-230	None	2.8	8.99	
	3450	S56C	100355	A	17	115/208-230	Auto.	2.8	8.99	
	1725	
	1725	S56C	100024	A	17	115/208-230	None	3.3	9.24	
	1725	S56C	100018	A	18	115/208-230	Man.	3.3	9.24	
	1725	S56C	101522	A	17	115/208-230	Auto.	3.3	9.24	
1/2	3450	S56C	100356	A	19	115/208-230	None	3.4	9.99	
	3450	S56C	100054	A	18	115/208-230	Auto.	3.4	9.99	
	1725	
	1725	S56C	100025	A	19	115/208-230	None	4.4	9.99	
	1725	S56C	100019	A	21	115/208-230	Man.	4.4	9.99	
	1725	S56C	100020	A	20	115/208-230	Auto.	4.4	9.99	
	1140	56C	110381	A	32	115/208-230	None	5.0	11.38	
	3/4	3450	S56C	100357	A	24	115/208-230	None	4.9	10.49
		3450	S56C	100055	A	24	115/208-230	Auto.	4.9	10.49
		1725	S56C	100026	A	24	115/208-230	None	5.4	10.99
1725		S56C	100021	A	24	115/208-230	Man.	5.4	10.99	
1725		S56C	101523	A	26	115/208-230	Auto.	5.4	10.99	
1140		56C	110382	A	46	115/208-230	None	6.4	12.88	
1	3450	56C	110384	A	28	115/208-230	None	6.0	10.88	
	3450	56C	113337	A	28	115/208-230	Auto.	6.0	10.84	
	1725	56C	110220	A	30	115/208-230	None	6.4	10.88	
	1725	56C	110036	A	27	115/208-230	Man.	6.4	10.88	
	1725	143TC	121002	B	31	115/208-230	None	6.4	11.28	
1½	3450	56C	110387	A	28	115/208-230	None	8.2	10.84	
	3450	56C	113336	A	28	115/208-230	Auto.	8.2	10.84	
	3450	
	1725	56C	110388☆	A	38	115/208-230	None	8.6	11.84	
	1725	56C	110037☆	A	39	115/208-230	Man.	8.6	11.84	
	1725	
2	3450	56C	110390	A	37	115/208-230	None	10.0	11.84	
	3450	56C	113335	A	36	115/208-230	Auto.	10.0	11.84	
	3450	145TC	121184	B	37	115/208-230	None	10.0	12.28	
	1725	
	1725	145TC	120073☆	B	49	115/208-230	None	10.5	13.28	
	1725	
3	3450	56C	113334	A	36	230	Auto.	15.0	11.84	
	3450	
	1740	184TC	131544	B	73	115/208-230	None	16.9	14.19	
5	3450	184TC	131777☆	B	70	208-230	None	22.2	14.69	
	1740	184TC	131539☆	B	81	230	None	21.0	14.69	

Motors in this column have NEMA Service Factors - see page 308 for details.

- ☆ Capacitor start/capacitor run design for reduced amperage, others are capacitor start/induction run.
- ✦ These totally enclosed single phase motors have 1.15 Service Factors.
- These motors are totally enclosed, non-ventilated — Others are fan cooled.
- † Class F insulated.
- Shaft extension has keyway and flat 180° apart for ease of mounting. Useable shaft is 1½" long by 1/2" diameter, 1/8" keyway.

TEFC • C FACE LESS BASE • SINGLE PHASE

NEMA Frame	Catalog Number	Disc. Sym.	App. Wgt. (lbs.)	Voltage	Over- load Prot.	F.L. Amps 230V	"C" Dim. (Inches)
48CZ➤	102661	A	14	115/208-230	None	2.0	9.19
48CZ➤	101765	A	18	115/208-230	None	2.7	9.19
	S56C 102868●✦	A	22	115/208-230	None	2.3	9.80
	S56C 102866	A	18	115/208-230	None	2.7	9.44
S56C	102870	A	20	115/208-230	None	2.8	9.44
	S56C 102873●	A	24	115/208-230	None	1.9	9.30
	48CZ➤	102663	A	19	115/208-230	None	3.3
S56C	101766	A	22	115/208-230	None	3.3	9.94
S56C	102867●✦	A	23	115/208-230	None	2.6	10.30
S56C	102869●✦	A	25	115/208-230	Man.	2.6	10.30
S56C	102864✦	A	22	115/208-230	None	3.5	9.94
S56C	102872✦	A	25	115/208-230	Man.	3.5	9.94
48CZ➤	102665	A	22	115/208-230	None	4.0	10.44
S56C	102862✦	A	21	115/208-230	None	4.0	10.69
S56C	102865✦	A	22	115/208-230	Man.	4.0	10.69
S56C	102871	A	24	115/208-230	Auto.	4.0	10.69
56C	110411	A	37	115/208-230	None	4.9	12.81
56C	110413	A	26	115/208-230	None	5.0	11.31
56C	110412	A	28	115/208-230	Man.	5.0	11.31
56C	110057✦	A	25	115/208-230	None	5.4	11.31
56C	110040✦	A	26	115/208-230	Man.	5.4	11.31
56C	110308✦	A	28	115/208-230	Auto.	5.4	11.31
56C	110414☆	A	42	115/208-230	None	5.3	13.31
56C	110416✦	A	28	115/208-230	None	6.0	11.81
56C	110415	A	28	115/208-230	Man.	6.0	11.81
56C	110058✦	A	33	115/208-230	None	6.4	11.81
56C	110041✦	A	29	115/208-230	Man.	6.4	11.81
143TC	121001	B	32	115/208-230	None	6.4	12.25
56C	110419	A	31	115/208-230	None	8.5	12.31
56C	110418	A	31	115/208-230	Man.	8.5	12.31
143TC	120101	B	36	115/208-230	None	8.5	12.75
56C	110420☆	A	37	115/208-230	None	8.6	12.81
56C	110042☆	A	40	115/208-230	Man.	8.6	12.81
145TC	120017☆	B	40	115/208-230	None	8.6	13.75
56C	110422✦	A	40	115/208-230	None	10.0	13.31
56C	110421✦†	A	41	115/208-230	Man.	10.0	13.31
145TC	120102✦†	B	43	115/208-230	None	10.0	13.75
56C	112136☆	A	41	115/230	None	9.2	13.31
145TC	120060☆	B	45	115/230	Man.	10.0	14.25
182TC	131516	B	64	115/208-230	None	12.4	14.47
...
145TC	120824☆	B	56	230	Man.	13.0	14.25
184TC	131545	B	82	115/208-230	None	16.8	16.47
184TC	131778☆	B	81	208-230	None	19.8	16.97
184TC	131540☆	B	104	230	None	23.0	17.47

Motors in this column have NEMA Service Factors except as noted by ✦, which have 1.15 Service Factors.

All 180 and 210 frame Rolled Steel motors have Class F Insulation.

C FACE MOTORS • SINGLE PHASE WITH BASE • CAPACITOR START • GENERAL PURPOSE



C Face Motors



DRIP-PROOF • C FACE WITH BASE • SINGLE PHASE

HP	RPM 60 Hz	NEMA Frame	Catalog Number	Disc. Sym.	App. Wgt. (lbs.)	Voltage	Over- load Prot.	F.L. Amps 230V	"C" Dim. (Inches)
1/4	1725
1/3	3450
	1725	S56C	103023	A	18	115/208-230	None	3.3	9.24
	1725	S56C	103083	A	18	115/208-230	Man.	3.3	9.24

1/2	3450	S56C	103024	A	20	115/208-230	None	3.4	9.99
	1725	S56C	101651	A	21	115/208-230	None	4.4	9.99
	1725	S56C	103084	A	21	115/208-230	Man.	4.4	9.99
3/4	3450	S56C	103025	A	24	115/208-230	None	4.9	10.49
	1725	S56C	101650	A	27	115/208-230	None	5.4	10.99
	1725	S56C	103086	A	27	115/208-230	Man.	5.4	10.99
1	3450	56C	116769	A	28	115/208-230	None	6.0	10.84
	3450
	1725	56C	113930	A	34	115/208-230	None	6.4	10.88
	1725
	1725
1 1/2	3450	56C	116770	A	35	115/208-230	None	6.2	11.34
	3450	56C	114214 ☆	A	35	115/208-230	Man.	6.2	11.34
	3450
	1725	56HC	113932 ☆□	A	39	115/208-230	None	8.6	11.84
	1725	56HC	113700 ☆□	A	38	115/208-230	Man.	7.2	11.84
	1725
2	3450	56C	116771	A	35	115/208-230	None	8.6	11.34
	3450	56C	114215 ☆	A	35	115/208-230	Man.	8.6	11.34
	3450
	3450
	1725	56HC	113281 ☆□	A	45	115/208-230	Man.	8.6	12.88
	1725	145TC	120992	B	45	115/230	None	10.5	13.28
	1725
3	3450	56HC	116707 ☆□	A	41	230	Man.	15.0	12.38
	3450
	3450	182TC	132083 ☆	B	74	115/208-230	None	14.0	14.18
	1740	184TC	131629	B	70	115/208-230	Man.	16.9	14.19
	1740	184TC	131853 ☆	B	87	208-230	Man.	15.4	15.96
5	3450	56HC	116709 ☆□	A	46	230	Man.	20.8	13.34
	3450	184TC	131781 ☆	B	70	208-230	None	22.2	14.19
	1740	184TC	131630 ☆	B	77	208-230	Man.	21.0	14.69
7 1/2	3450	184TC	132043 ☆	B	112	208-230	Tstat	31.0	16.69
	1740	215TC	140806 ☆	B	120	208-230	None	36.0	17.60
10	3450
	1740

Motors in this column have NEMA Service Factors - see page 308 for details.

- ☆ Capacitor start/capacitor run design for reduced amperage, others are capacitor start/induction run.
- ◆ These totally enclosed single phase motors have 1.15 Service Factors.
- These motors are totally enclosed, non-ventilated — Others are fan cooled.
- Combination 56H base motors have mounting holes for NEMA 56 and NEMA 143-145T and standard NEMA 56C face and shaft.
- † Class F insulated.

All 180 and 210 frame Rolled Steel motors have Class F Insulation.

TEFC • C FACE WITH BASE • SINGLE PHASE

NEMA Frame	Catalog Number	Disc. Sym.	App. Wgt. (lbs.)	Voltage	Over- load Prot.	F.L. Amps 230V	"C" Dim. (Inches)
S56C	102916	A	22	115/208-230	None	2.7	9.69
S56C	102929	A	22	115/208-230	None	2.8	9.69
S56C	102930	A	24	115/208-230	None	3.1	10.44
S56C	103082	A	24	115/208-230	Man.	3.1	10.31
S56C	102910 ◆	A	25	115/208-230	None	2.6	10.31
S56C	102903	A	25	115/208-230	None	3.5	9.94
S56C	102907 ◆	A	22	115/208-230	None	4.0	10.69
S56C	103085	A	22	115/208-230	Man.	4.0	10.69
56C	112135	A	26	115/208-230	None	5.0	11.31
56C	110905 ◆	A	26	115/208-230	None	5.4	11.31
56C	116922	A	26	115/208-230	Man.	5.4	11.31
56C	110180	A	28	115/208-230	None	6.0	11.81
56C	115877	A	28	115/208-230	Man.	6.0	11.81
56C	110908 ◆	A	30	115/208-230	None	6.4	11.81
56C	115879	A	32	115/208-230	Man.	6.4	11.81
143TC	121680	B	32	115/208-230	None	6.4	12.25
...
56C	110909	A	34	115/208-230	None	8.5	12.31
56C	115024 ☆	A	35	115/208-230	Man.	6.2	12.31
56HC	110910 ☆◆□	A	39	115/208-230	None	8.6	12.81
56HC	116703 ☆□	A	42	115/208-230	Man.	8.6	12.81
145TC	121681	B	40	115/208-230	None	8.6	13.75
56HC	113931 ◆□†	A	46	115/208-230	None	10.0	13.31
56HC	114995 ☆□	A	42	115/208-230	Man.	9.2	13.31
56HC	115878 ◆□†	A	43	115/208-230	Man.	10.0	13.31
145TC	121008 ◆†	B	43	115/208-230	None	10.0	13.75
...
145TC	120274 ☆	B	49	115/230	None	9.2	14.25
145TC	121465 ☆	A	44	115/208-230	Man.	9.2	13.75
56HC	115048 ☆□	A	53	208-230	Man.	14.0	13.31
145TC	121060 ☆	B	51	230	Man.	13.0	14.25
...
184TC	131631	B	84	115/208-230	Man.	16.8	16.47
184TC	131857 ☆	B	104	230	Man.	13.7	17.61
...
184TC	131632 ☆◆	B	103	230	Man.	19.8	16.97
184TC	131633 ☆	B	86	230	Man.	23.0	16.97
213TC	140694 ☆	B	120	208-230	None	32.0	19.07
215TC	140807 ☆	B	159	208-230	None	33.6	20.21
215TC	140695 ☆	B	138	208-230	None	41.5	20.57
215TC	140678 ☆	B	152	230	None	40.0	20.71

Motors in this column have NEMA Service Factors except as denoted by ◆, which have 1.15 Service Factors.

QUICK REFERENCE

WASHGUARD C FACE MOTORS.....	Page 30
BRAKEMOTORS.....	44
WATTSAVER® C FACE MOTORS.....	18



50 HERTZ MOTORS SINGLE PHASE

50 HZ • SINGLE PHASE

General Specifications:

50 Hz single phase designs produce full rated HP on 50 Hz power supply. Designed for general purpose application.

Electrical Features:

High efficiency energy saving designs. Centrifugal switch specifically designed for 50 Hz service. Conduit box with leads. Torque at rated HP on 50 Hz power supply is 20% greater than the running torque of a 60 Hz motor. All 180 and 210 frame Rolled Steel motors have Class F Insulation.



SINGLE PHASE • DRIP-PROOF • RIGID BASE • IP22

HP	RPM 50 Hz	NEMA Frame	Catalog Number	Disc. Sym.	App. Wgt. (lbs.)	Voltage	Over-load Prot.	F.L. Amps 220V	"C" Dim. (Inches)
1/3	2850
	1425	56	110394	A	22	110/220	None	3.2	9.88
	1425
1/2	2850	56	113901	A	25	110/220	None	3.8	10.34
	1425	56	110395	A	25	110/220	None	4.1	10.38
	1425
3/4	2850	56	113902	A	27	110/220	None	5.6	10.34
	1425	56	110396	A	30	110/220	None	5.9	10.88
	1425
1	2850	56	113903	A	31	110/220	None	6.6	10.84
	1425	56H	110397 □	A	35	110/220	None	6.4	11.88
	1425
1½	2850	56H	113904	A	37	110/220	None	8.6	11.84
	1425	56H	110398 ☆□	A	43	110/220	None	8.4	12.35
	1425
2	2850	56H	113905	A	42	110/220	None	10.7	12.34
	1440	182T	131553	B	70	220	None	11.8	13.69
	1440
3	2850	56H	113937 †	A	47	220	None	12.4	12.84
	2850
	1440	184T	131554	B	80	220	None	16.8	14.69
5	2850
	1440	184T	131555 ☆	B	95	220	None	23.2	15.69
	1440

SINGLE PHASE • TEFC • RIGID BASE • IP54

NEMA Frame	Catalog Number	Disc. Sym.	App. Wgt. (lbs.)	Voltage	Over-load Prot.	F.L. Amps 220V	"C" Dim. (Inches)
56	113916	A	25	110/220	None	3.2	10.81
56	110423	A	24	110/220	None	3.2	10.81
56	113908	A	26	110/220	Man.	3.2	10.81
56	113917	A	27	110/220	None	3.8	11.31
56	110064	A	25	110/220	None	4.1	11.31
56	113909	A	29	110/220	Man.	4.1	11.31
56	113918	A	29	110/220	None	5.6	11.31
56	110065 †	A	32	110/220	None	5.9	11.81
56	113910	A	32	110/220	Man.	5.9	11.81
56	113919	A	32	110/220	None	6.6	11.81
56H	110066 □	A	38	110/220	None	6.4	12.81
56	113911 †	A	34	110/220	Man.	6.4	12.31
56H	113920	A	44	110/220	None	8.0	13.31
56H	110424 †☆□	A	47	110/220	None	8.6	13.31
56H	113929 †☆	A	49	110/220	Man.	8.6	13.31
56HZ	113928 †■	A	44	110/220	None	10.7	13.76
182T	131556	B	95	220	None	11.2	15.96
182T	131600	B	71	220	Man.	12.0	14.96
145T	121070 †☆	B	50	220	None	12.4	12.84
56H	113936 †☆	A	48	220	None	12.4	13.81
184T	131557	B	98	220	None	15.9	16.96
184T	131601	B	98	220	Man.	15.9	16.96
184T	131638 ☆	B	98	220	None	20.5	17.46
184T	131578 ☆	B	103	220	None	21.0	17.46
213TZ	140475 ☆	B	163	220	Man.	24.5	18.71

SINGLE PHASE • DRIP-PROOF • RESILIENT BASE • IP22

HP	RPM 50 Hz	NEMA Frame	Catalog Number	Disc. Sym.	App. Wgt. (lbs.)	Voltage	Over-load Prot.	F.L. Amps 220V	"C" Dim. (Inches)
1/3	2850	56	114222	A	24	110/220	None	3.2	10.82
	1425	56	114223	A	24	110/220	None	3.2	10.81
	1425
1/2	2850	56	114224	A	26	110/220	None	3.8	11.32
	1425	56	114225	A	27	110/220	None	4.1	11.31
	1425
3/4	2850	56	114226	A	28	110/220	None	5.6	11.32
	1425	56	114227	A	31	110/220	None	5.9	11.81
	1425
1	2850	56	114228	A	31	110/220	None	6.6	11.82
	1425	56	114229	A	35	110/220	None	6.4	12.31
	1425
1½	2850
	1425	56H	114231 ☆	A	42	110/220	None	8.4	13.32
	1425
2	2850
	1440	56H	114233 †	A	49	220	None	9.6	13.82
	1440

SINGLE PHASE • TEFC • C FACE LESS BASE • IP54

NEMA Frame	Catalog Number	Disc. Sym.	App. Wgt. (lbs.)	Voltage	Over-load Prot.	F.L. Amps 220V	"C" Dim. (Inches)
...
56C	113921	A	22	110/220	Man.	3.2	10.81
56C	113912	A	25	110/220	None	3.8	11.31
...
56C	113922	A	29	110/220	Man.	4.1	11.31
56C	113913	A	28	110/220	None	5.6	11.31
...
56C	113923	A	31	110/220	Man.	5.9	11.81
56C	113914	A	32	110/220	None	6.6	11.81
...
56C	113924 †	A	34	110/220	Man.	6.4	12.31
56C	113915	A	43	110/220	None	8.0	13.31
...
56C	113925 †☆	A	42	110/220	Man.	8.6	13.31
145TC	120990 †☆	B	47	110/220	None	8.6	13.75
...
182TC	131599	B	70	220	Man.	12.0	14.97

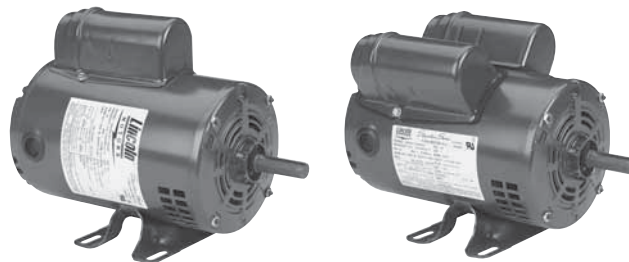
■ Combination 56HZ base has mounting holes for NEMA 56 and 143-5T and a standard NEMA 145T frame shaft of 7/8" diameter.
 □ Combination 56H base motors have mounting holes for NEMA 56 and NEMA 143-5T and a standard NEMA 56 shaft.
 ☆ Capacitor start/capacitor run design for reduced amperage, others are capacitor start/induction run.
 † Class F insulated.



Signature Series ODP GENERAL PURPOSE
115, 208 AND 230 VOLTS • 1-PHASE
FOOT MOUNT AND C-FACE
1/4 TO 10 HP

Features:

- Durable rolled steel frame construction
- NEMA Design B performance
- Meet or exceed NEMA Service Factors
- Maintenance-free double sealed ball bearings
- Continuous Duty
- Premium Class B Insulation system
- Durable, easy-to-read mylar nameplate
- UL Recognized Component Listing and CSA certified
- Warranty - 18 months from date of manufacture and 12 months from date of installation which ever period expires first.
- Made in U.S.A.



Applications:

For use where water and dust exposure is moderate. Ideally suited for use on pumps, compressors, blowers, fans and other standard industrial applications.

See page 182 for ODP Single Phase motors with built-in overload protection.

FOOT MOUNT

HP	SYN RPM	Frame	SF	Volts	Model Number	Product Number	Notes (see page 306)	Approx Shpg Wght (lbs)	Mult Sym
1/4	1800	48	1.35	115/208-230	SPD4S0.25T1C6028	LM24457		17	SP-1
	1200	56	1.35	115/208-230	SRD6S0.25T1C6028	LM24541		17	SP-1
1/3	3600	48	1.15	115/208-230	SPD2S0.33T1C6028	LM24467		16	SP-1
	1800	56	1.35	115/208-230	SRD4S0.33T1C6028	LM24570		18	SP-1
1/2	1200	56	1.15	115/208-230	SRD6S0.33T1C6028	LM24540		24	SP-1
	3600	48	1.25	115/208-230	SPD2S0.5T1C6028	LM24465		18	SP-1
1/2	1800	56	1.25	115/208-230	SRD4S0.5T1C6028	LM24551		22	SP-1
	1200	56	1.25	115/208-230	SRD6S0.5T1C6028	LM24542		30	SP-1
3/4	3600	56	1.25	115/208-230	SRD2S0.75T1C6028	LM24674		21	SP-1
	1800	56	1.25	115/208-230	SRD4S0.75T1B6028	LM24502		26	SP-1
3/4	1200	56	1.15	115/208-230	SRD6S0.75T1C6028	LM24543		38	SP-1
	3600	56	1.25	115/208-230	SRD2S1T1B6028	LM24525		23	SP-1
1	1800	56	1.15	115/208-230	SRD4S1T1C6028	LM24580		30	SP-1
	1800	143T*	1.15	115/208-230	SSD4S1T1C6028	LM24675		33	SP-1
1 1/2	3600	56	1.15	115/208-230	SRD2S1.5T1B6028	LM24524		25	SP-1
	3600	143T*	1.15	115/208-230	SSD2S1.5T1C6028	LM24676		30	SP-1
1 1/2	1800	56H*	1.15	115/208-230	SRD4S1.5T1C6028	LM24583		40	SP-1
	1800	145T*	1.15	115/208-230	SSD4S1.5T1C6028	LM24687		41	SP-1
2	3600	56H*	1.15	115/208-230	SRD2S2T1B6028	LM24624		35	SP-1
	3600	145T*	1.15	115/208-230	SSD2S2T1B6028	LM24806		40	SP-1
2	1800	145T*	1.15	115/208-230	SSD4S2T1B6028	LM24677		49	SP-1
	1800	182T	1.15	115/208-230	SS182D4S2T1C6028	LM24678	D - 131515	65	SP-1
3	3600	182T	1.15	115/208-230	SS182D2S3T1C6028	LM24679	D - 131636	57	SP-1
	1800	184T	1.15	115/208-230	SS184D4S3T1C6028	LM24680	D - 131534	78	SP-1
5	3600	184T	1.15	208-230	SS184D2S5T1C6008	LM24681	D - 131616	78	SP-1
	1800	184T	1.15	208-230	SSD4S5T1B6008	LM24682	D - 131537	87	SP-1
7 1/2	1800	215T	1.15	208-230	SS215D4S7.5T1B6008	LM24683		118	SP-1
10	1800	215T	1.15	208-230	SSD4S10T1B6008	LM24684		140	SP-1

* 56H, 143T and 145T Combination Base with 12 mounting holes.

Prices and data subject to change without notice.

Product numbers in red are STOCK items.

Signature Series ODP GENERAL PURPOSE
 115, 208 AND 230 VOLTS • 1-PHASE
 FOOT MOUNT AND C-FACE
 1/4 TO 10 HP



C-FACE WITH FEET

HP	SYN RPM	Frame	SF	Volts	Model Number	Product Number	Notes (see page 306)	Approx Shpg Wght (lbs)	Mult Sym
1/2	1800	56C	1.25	115/208-230	SRD4S0.5TLC1C6028	LM24697		22	SP-1
3/4	1800	56C	1.25	115/208-230	SRD4S0.75TLC1B6028	LM24699		26	SP-1
1	1800	56C	1.15	115/208-230	SRD4S1TLC1C6028	LM24700		30	SP-1
1 1/2	1800	56HC	1.15	115/208-230	SRD4S1.5TLC1C6028	LM24701		40	SP-1
2	1800	145TC	1.15	115/208-230	SSD4S2TLC1B6028	LM24698		50	SP-1

C-FACE FOOTLESS

HP	SYN RPM	Frame	SF	Volts	Model Number	Product Number	Notes (see page 306)	Approx Shpg Wght (lbs)	Mult Sym
1/4	1800	56C	1.35	115/208-230	SRD4S0.25TLCN1C6028	LM24569		17	SP-1
1/3	3600	56C	1.15	115/208-230	SRD2S0.33TLCN1C6028	LM24688		16	SP-1
	1800	56C	1.35	115/208-230	SRD4S0.33TLCN1C6028	LM24571		17	SP-1
1/2	3600	56C	1.25	115/208-230	SRD2S0.5TLCN1C6028	LM24689		17	SP-1
	1800	56C	1.25	115/208-230	SRD4S0.5TLCN1C6028	LM24555		21	SP-1
	1200	56C	1.25	115/208-230	SRD6S0.5TLCN1C6028	LM24544		33	SP-1
3/4	3600	56C	1.25	115/208-230	SRD2S0.75TLCN1C6028	LM24690		19	SP-1
	1800	56C	1.25	115/208-230	SRD4S0.75TLCN1B6028	LM24505		25	SP-1
	1200	56C	1.15	115/208-230	SRD6S0.75TLCN1C6028	LM24691		37	SP-1
1	3600	56C	1.25	115/208-230	SRD2S1TLCN1B6028	LM24526		24	SP-1
	1800	56C	1.15	115/208-230	SRD4S1TLCN1C6028	LM24586		29	SP-1
	1800	143TC	1.15	115/208-230	SSD4S1TLCN1C6028	LM24692		32	SP-1
1 1/2	3600	56C	1.15	115/208-230	SRD2S1.5TLCN1B6028	LM24523		26	SP-1
	1800	56HC	1.15	115/208-230	SRD4S1.5TLCN1C6028	LM24587		39	SP-1
2	3600	56HC	1.15	115/208-230	SRD2S2TLCN1B6028	LM24527		35	SP-1
	3600	145TC	1.15	115/208-230	SSD2S2TLCN1B6028	LM24693		40	SP-1
	1800	56C	1.15	115/208-230	SRD4S2TLCN1B6028	LM24507		45	SP-1
	1800	145TC	1.15	115/208-230	SSD4S2TLCN1B6028	LM24694		50	SP-1
3	1800	184TC	1.15	115/208-230	SS184D4S3TLCN1C6028	LM24695	D - 131544	85	SP-1
5	1800	184TC	1.15	208-230	SSD4S5TLCN1B6008	LM24696	D - 131539	94	SP-1

* 56H, 143T and 145T Combination Base with 12 mounting holes.

Prices and data subject to change without notice.

Product numbers in red are STOCK items.



Signature Series ODP GENERAL PURPOSE
OVERLOAD PROTECTION

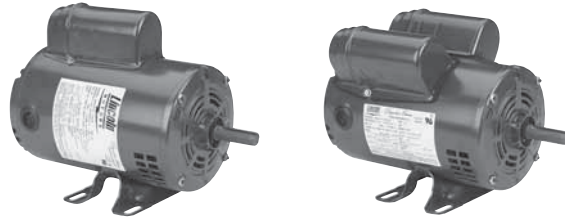
115, 208 AND 230 VOLTS • 1-PHASE
FOOT MOUNT
1/4 TO 2 HP

Features:

- Built-in thermal overload protection
- Durable rolled steel frame construction
- NEMA Design B performance
- Meet or exceed NEMA Service Factors
- Maintenance-free double sealed ball bearings
- Continuous Duty
- Premium Class B Insulation system
- Durable, easy-to-read mylar nameplate
- UL Recognized Component Listing and CSA certified
- Warranty - 18 months from date of manufacture and 12 months from date of installation which ever period expires first.
- Made in U.S.A.

Applications:

For use where water and dust exposure is moderate. Ideally suited for use on pumps, compressors, blowers, fans and other standard industrial applications where thermal overload protection is desired.



CAUTION A motor with an auto reset protector (TP2 suffix) must not be used where automatic restarting (after motor cool-down) would endanger personnel or equipment. Such applications should use a manual reset protector (TP1).

FOOT MOUNT

HP	SYN RPM	Frame	SF	Volts	Model Number	Product Number	Notes (see page 306)	Approx Shpg Wght (lbs)	Mult Sym
1/4	1800	48	1.35	115/208-230	SPD4S0.25T1C6028TP1	LM24458	ML	17	SP-1
1/3	1800	56	1.35	115/208-230	SRD4S0.33T1C6028TP1	LM24550	ML	18	SP-1
	1800	56	1.35	115/208-230	SRD4S0.33T1C6028TP2	LM24549	AT	18	SP-1
1/2	1800	56	1.25	115/208-230	SRD4S0.5T1C6028TP1	LM24553	ML	23	SP-1
	1800	56	1.25	115/208-230	SRD4S0.5T1C6028TP2	LM24552	AT	22	SP-1
3/4	1800	56	1.25	115/208-230	SRD4S0.75T1B6028TP1	LM24504	ML	25	SP-1
	1800	56	1.25	115/208-230	SRD4S0.75T1B6028TP2	LM24503	AT	25	SP-1
1	1800	56	1.15	115/208-230	SRD4S1T1C6028TP1	LM24582	ML	29	SP-1
	1800	56	1.15	115/208-230	SRD4S1T1C6028TP2	LM24581	AT	29	SP-1
1 1/2	1800	56H*	1.15	115/208-230	SRD4S1.5T1C6028TP1	LM24585	ML	40	SP-1
2	1800	145T*	1.15	115/208-230	SSD4S2T1B6028TP1	LM24685	ML	50	SP-1

* 56H, 143T and 145T Combination Base with 12 mounting holes.

Prices and data subject to change without notice.

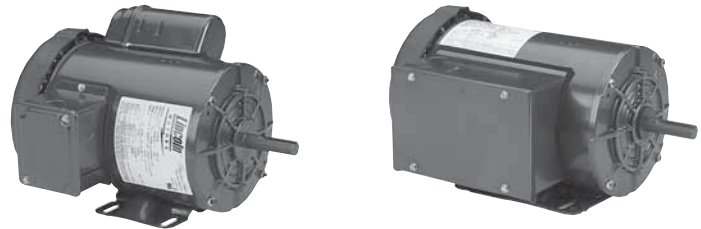
Product numbers in red are STOCK items.

Signature Series TEFC GENERAL PURPOSE
 115, 208 AND 230 VOLTS • 1-PHASE
 FOOT MOUNT AND C-FACE
 1/4 TO 10 HP



Features:

- Durable rolled steel frame construction
- NEMA Design B performance
- Maintenance-free double sealed ball bearings
- Continuous Duty
- Premium Class B Insulation system
- Durable, easy-to-read mylar nameplate
- UL Recognized Component Listing and CSA certified
- Warranty - 18 months from date of manufacture and 12 months from date of installation which ever period expires first.
- Made in U.S.A.



Applications:

For use where exposure to water, dust and dirt exists. Ideally suited for use on pumps, compressors, fans, conveyors and other industrial equipment.

See page 189 for TEFC Single Phase motors with built-in overload protection.

FOOT MOUNT

HP	SYN RPM	Frame	SF	Volts	Model Number	Product Number	Notes (see page 306)	Approx Shpg Wght (lbs)	Mult Sym
1/4	1800	56	1.15	115/208-230	SRF4S0.25T1C6028	LM24606		18	SP-1
	1200	56	1.15	115/208-230	SRF6S0.25T1C6028	LM24545		25	SP-1
1/3	3600	56	1.15	115/208-230	SRF2S0.33T1C6028	LM24705		19	SP-1
	1800	56	1.15	115/208-230	SRF4S0.33T1C6028	LM24597		19	SP-1
	1200	56	1.15	115/208-230	SRF6S0.33T1C6028	LM24546		28	SP-1
1/2	3600	56	1.15	115/208-230	SRF2S0.5T1C6028	LM24706		23	SP-1
	1800	56	1.15	115/208-230	SRF4S0.5T1C6028	LM24627		24	SP-1
	1200	56	1.15	115/208-230	SRF6S0.5T1B6028	LM24496		36	SP-1
3/4	3600	56	1.15	115/208-230	SRF2S0.75T1C6028	LM24707		30	SP-1
	1800	56	1.15	115/208-230	SRF4S0.75T1C6028	LM24607		30	SP-1
	1200	56	1.15	115/208-230	SRF6S0.75T1B6028	LM24497		41	SP-1
1	3600	56	1.15	115/208-230	SRF2S1T1C6028	LM24708		31	SP-1
	1800	56	1.15	115/208-230	SRF4S1T1C6028	LM24610		32	SP-1
	1800	143T*	1.15	115/208-230	SSF4S1T1C6028	LM24709		34	SP-1
1 1/2	3600	56H*	1.15	115/208-230	SRF2S1.5T1B6028	LM24531		35	SP-1
	3600	143T*	1.15	115/208-230	SSF2S1.5T1B6028	LM24710		39	SP-1
	1800	56H*	1.15	115/208-230	SRF4S1.5T1B6028	LM24513		41	SP-1
	1800	145T*	1.15	115/208-230	SSF4S1.5T1B6028	LM24711		42	SP-1
2	3600	56H*	1.15	115/208-230	SRF2S2T1B6028	LM24533		40	SP-1
	3600	145T*	1.15	115/208-230	SSF2S2T1B6028	LM24712		41	SP-1
	1800	182T	1.15	115/208-230	SS182F4S2T1B6028	LM24713	D - 131509	54	SP-1
3	3600	145T*	1.15	208-230	SS145F2S3T1B6008	LM24714		48	SP-1
	3600	182T	1.00	115/208-230	SSF2S3T1B6028	LM24715	D - 131637	69	SP-1
	1800	184T	1.00	115/208-230	SS184F4S3T1C6028	LM24716	D - 131533	99	SP-1
5	3600	184T	1.00	208-230	SSF2S5T1B6008	LM24717	D - 131549	98	SP-1
	1800	184T	1.00	208-230	SSF4S5T1B6008	LM24718	D - 131538	98	SP-1
7 1/2	3600	213T	1.00	208-230	SSF2S7.5T1B6008	LM24719		120	SP-1
	1800	215T	1.00	208-230	SS215F4S7.5T1B6008	LM24720		133	SP-1
10	3600	215T	1.00	208-230	SSF2S10T1B6008	LM24721		138	SP-1
	1800	215T	1.00	230	SSF4S10T1B66	LM24722		155	SP-1

* 56H, 143T and 145T Combination Base with 12 mounting holes.

Prices and data subject to change without notice.

Product numbers in red are STOCK items.



Signature Series TEFC GENERAL PURPOSE
115, 208 AND 230 VOLTS • 1-PHASE
FOOT MOUNT AND C-FACE
1/4 TO 10 HP

C-FACE WITH FEET

HP	SYN RPM	Frame	SF	Volts	Model Number	Product Number	Notes (see page 306)	Approx Shpg Wght (lbs)	Mult Sym
1/4	1800	56C	1.15	115/208-230	SRF4S0.25TLC1C6028	LM24723		17	SP-1
1/3	3600	56C	1.15	115/208-230	SRF2S0.33TLC1C6028	LM24724		21	SP-1
	1800	56C	1.15	115/208-230	SRF4S0.33TLC1C6028	LM24600		19	SP-1
1/2	3600	56C	1.15	115/208-230	SRF2S0.5TLC1C6028	LM24725		23	SP-1
	1800	56C	1.15	115/208-230	SRF4S0.5TLC1C6028	LM24628		24	SP-1
3/4	3600	56C	1.15	115/208-230	SRF2S0.75TLC1C6028	LM24726		30	SP-1
	1800	56C	1.15	115/208-230	SRF4S0.75TLC1C6028	LM24615		30	SP-1
1	3600	56C	1.15	115/208-230	SRF2S1TLC1C6028	LM24727		31	SP-1
	1800	56C	1.15	115/208-230	SRF4S1TLC1C6028	LM24616		32	SP-1
1 1/2	3600	56HC	1.15	115/208-230	SRF2S1.5TLC1B6028	LM24539		35	SP-1
	1800	56HC	1.15	115/208-230	SRF4S1.5TLC1B6028	LM24728		41	SP-1
2	3600	56HC	1.15	115/208-230	SRF2S2TLC1B6028	LM24729		40	SP-1
	3600	145TC	1.15	115/208-230	SSF2S2TLC1B6028	LM24730		40	SP-1
	1800	145TC	1.15	115/230	SSF4S2TLC1B6028	LM24731		52	SP-1
3	3600	145TC	1.15	208-230	SS145F2S3TLC1B6008TP1	LM29441		48	SP-1

C-FACE FOOTLESS

HP	SYN RPM	Frame	SF	Volts	Model Number	Product Number	Notes (see page 306)	Approx Shpg Wght (lbs)	Mult Sym
1/4	1800	56C	1.15	115/208-230	SRN4S0.25TLCN1C6028	LM24733		18	SP-1
1/3	3600	56C	1.15	115/208-230	SRN2S0.33TLCN1C6028	LM24734		20	SP-1
	1800	56C	1.15	115/208-230	SRF4S0.33TLCN1C6028	LM24598		19	SP-1
	1200	56C	1.15	115/208-230	SRF6S0.33TLCN1C6028	LM24735		28	SP-1
1/2	3600	56C	1.15	115/208-230	SRF2S0.5TLCN1C6028	LM24736		23	SP-1
	1800	56C	1.15	115/208-230	SRF4S0.5TLCN1C6028	LM24599		24	SP-1
	1200	56C	1.15	115/208-230	SRF6S0.5TLCN1B6028	LM24737		36	SP-1
3/4	3600	56C	1.15	115/208-230	SRF2S0.75TLCN1C6028	LM24738		30	SP-1
	1800	56C	1.15	115/208-230	SRF4S0.75TLCN1C6028	LM24613		30	SP-1
	1200	56C	1.15	115/208-230	SRF6S0.75TLCN1B6028	LM24739		41	SP-1
1	3600	56C	1.15	115/208-230	SRF2S1TLCN1C6028	LM24740		31	SP-1
	1800	56C	1.15	115/208-230	SRF4S1TLCN1C6028	LM24614		32	SP-1
	1800	143TC	1.15	115/208-230	SSF4S1TLCN1C6028	LM24741		35	SP-1
1 1/2	3600	56C	1.15	115/208-230	SRF2S1.5TLCN1B6028	LM24535		35	SP-1
	1800	56C	1.15	115/208-230	SRF4S1.5TLCN1B6028	LM24622		41	SP-1
2	3600	56C	1.15	115/208-230	SRF2S2TLCN1B6028	LM24530		40	SP-1
3	3600	145TC	1.15	208-230	SS145F2S3TLCN1B6008	LM24742		48	SP-1

* 56H, 143T and 145T Combination Base with 12 mounting holes.
 Prices and data subject to change without notice.

Product numbers in red are STOCK items.

115, 208 AND 230 VOLTS • 1-PHASE
FOOT MOUNT
1/3 TO 3 HP**Features:**

- Built-in thermal overload protection
- Durable rolled steel frame construction
- NEMA Design B performance
- Maintenance-free double sealed ball bearings
- Continuous Duty
- Premium Class B Insulation system
- Durable, easy-to-read mylar nameplate
- UL Recognized Component Listing and CSA certified
- Warranty - 18 months from date of manufacture and 12 months from date of installation which ever period expires first.
- Made in U.S.A.

Applications:

For use where exposure to water, dust and dirt exists. Ideally suited for use on pumps, compressors, fans, conveyors and other industrial equipment where thermal overload protection is desired.



CAUTION A motor with an auto reset protector (TP2 suffix) must not be used where automatic restarting (after motor cool-down) would endanger personnel or equipment. Such applications should use a manual reset protector (TP1).

FOOT MOUNT

HP	SYN RPM	Frame	SF	Volts	Model Number	Product Number	Notes (see page 306)	Approx Shpg Wght (lbs)	Mult Sym
1/3	1800	56	1.15	115/208-230	SRF4S0.33T1C6028TP1	LM24602	ML	20	SP-1
	1800	56	1.15	115/208-230	SRF4S0.33T1C6028TP2	LM24601	AT	19	SP-1
1/2	3600	56	1.15	115/208-230	SRF2S0.5T1C6028TP1	LM24743	ML	23	SP-1
	1800	56	1.15	115/208-230	SRF4S0.5T1C6028TP1	LM24604	ML	24	SP-1
	1800	56	1.15	115/208-230	SRF4S0.5T1C6028TP2	LM24603	AT	24	SP-1
3/4	3600	56	1.15	115/208-230	SRF2S0.75T1C6028TP1	LM24744	ML	26	SP-1
	1800	56	1.15	115/208-230	SRF4S0.75T1C6028TP1	LM24609	ML	30	SP-1
	1800	56	1.15	115/208-230	SRF4S0.75T1C6028TP2	LM24608	AT	30	SP-1
1	3600	56	1.15	115/208-230	SRF2S1T1C6028TP1	LM24745	ML	31	SP-1
	1800	56	1.15	115/208-230	SRF4S1T1C6028TP1	LM24612	ML	32	SP-1
	1800	56	1.15	115/208-230	SRF4S1T1C6028TP2	LM24611	AT	32	SP-1
1 1/2	3600	56H*	1.15	115/208-230	SRF2S1.5T1B6028TP1	LM24532	ML	35	SP-1
	1800	56H*	1.15	115/208-230	SRF4S1.5T1B6028TP1	LM24515	ML	41	SP-1
	1800	56H*	1.15	115/208-230	SRF4S1.5T1B6028TP2	LM24514	AT	41	SP-1
	1800	145T	1.15	115/208-230	SSF4S1.5T1B6028TP1	LM24746	ML	43	SP-1
2	3600	56H*	1.15	115/208-230	SRF2S2T1B6028TP1	LM24534	ML	40	SP-1
	3600	145T	1.15	115/208-230	SSF2S2T1B6028TP1	LM24747	ML	40	SP-1
3	3600	145T	1.15	208-230	SS145F2S3T1B6028TP1	LM24748	ML	48	SP-1

Prices and data subject to change without notice.

Product numbers in red are STOCK items.