

Platinum VSD - Plus

Control unit



Mounting Instructions



1 General information

First read, then start

1 General information

1.1 First read, then start



Read this documentation thoroughly before carrying out the installation and commissioning.
Please observe the safety instructions!



You will find information on wiring and commissioning in the mounting and switch-on instructions of the inverter.



Information and tools with regard to the LEESON products can be found on the Internet:
<http://www.leeson.com>

2 Mounting

2.1 Important notes

DANGER!

Dangerous electrical voltage

Possible consequence: death or severe injuries

- ▶ All works on the inverter must only be carried out in the deenergised state.
 - ▶ After switching off the mains voltage, wait for at least 3 minutes before you start working.
-

2 Mounting

Mounting steps

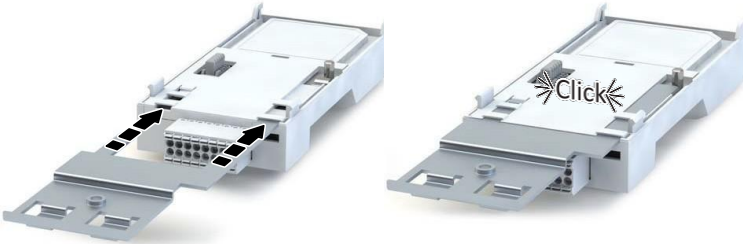
2.2 Mounting steps

You need:

- Torx screwdriver TX20

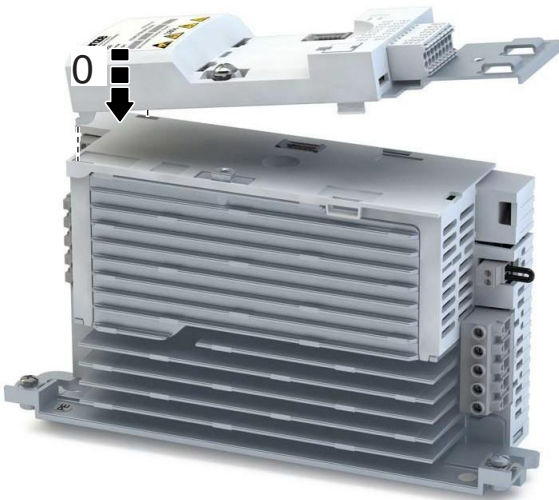
1. Preparation:

1. Insert the shield sheet into the slot on the back side until it engages.



2. Mounting:

1. Hook the control unit into the upper mounting slots.



2. Turn it downwards until it engages into the lower mounting slots.



3. Fix it with a securing screw.



The control unit is mounted.

LEESON Electric
Grafton, Wisconsin 53024 U.S.A.
PH: 262-377-8810
FAX: 262-377-9025
Service Dept. FAX: 262-377-0090

www.leeson.com

REGAL BELOIT CANADA
Mississauga (Toronto) Ontario, Canada L5T 2 N7
PH: 905-670-4770
FAX: 905-670-4378

www.leeson.ca



A Regal Brand

REGAL

www.regalbeloit.com



13520770