

**70-1105 In-Lbs Output Torque**

**Design Specifications:**

Fractional horsepower AC gearmotors. Totally enclosed for continuous duty, general purpose applications. Rated for 60 Hz input.



Gearbox has rugged aluminum die cast housing, for maximum gear and bearing support. Precision machined gearing, hardened for maximum load capability. All gearing designed and rated to AGMA Class 9 standards and to withstand momentary shock overload of 200%. Oversized output bearings for greater overhung load capacity and longer life. High-carbon alloy output shaft provides maximum strength and rigidity. All needle bearing journals are precision-ground after heat treating, to provide maximum finish and fit. Heavy-duty industrial oil seals help keep lubricant in and dirt out. Gears and bearings are splash lubricated with permanent, heavy-duty gear oil.

**Application Notes:**

These gearmotors are designed for mounting at any angle, but shaft-up with motor below gearhead is not recommended. P1100 AC gearmotors have the same mounting dimensions as Bison 482 gearmotors and many Dayton gearmotors.

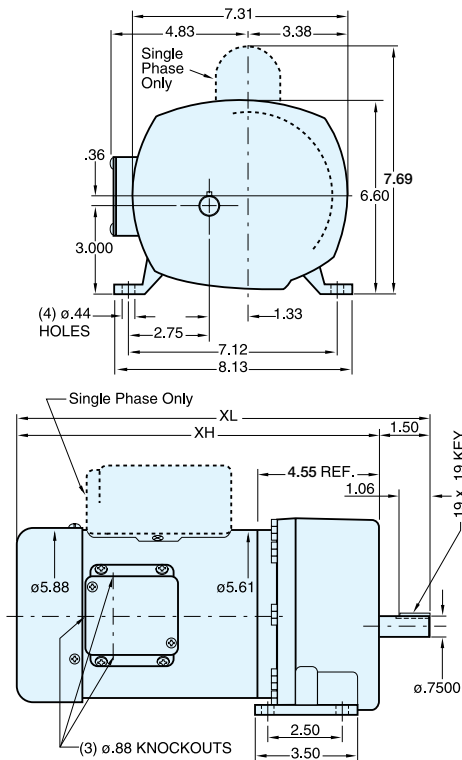
Three phase units suitable for inverter duty.

**Both single and three phase models include conduit box.** For additional information, see Bulletin 1830.

**P1100 SERIES AC GEARMOTORS**  
SINGLE PHASE • FRACTIONAL HP • TEFC • 115/230V

Output RPM	F.L. Torque (Lb.In.)	Input HP	Catalog Number	Type & Frame	Ratio to 1	F.L. Amps 115V AC	Overhung Load Lbs.	DIMENSIONS XL XH Inches	
8	975	¼	107000.00	P1103-48	212	5.4	700	13.42	11.92
12	1030	¼	107004.00	P1103-48	143	5.4	700	13.42	11.92
18	800	¼	107003.00	P1103-48	95	5.4	700	13.42	11.92
26	569	¼	107002.00	P1103-48	66	5.4	650	13.42	11.92
59	248	¼	107005.00	P1102-48	29	5.4	625	13.42	11.92
133	114	¼	107001.00	P1102-48	13	5.4	525	13.42	11.92
18	1089	⅓	107006.00	P1103-48	95	6.2	700	13.67	13.17
26	752	⅓	107012.00	P1103-48	66	6.2	650	13.67	13.17
41	461	⅓	107011.00	P1102-48	42	6.2	650	13.67	13.17
59	330	⅓	107010.00	P1102-48	29	6.2	625	13.67	13.17
91	224	⅓	107009.00	P1102-48	19	6.2	575	13.67	13.17
157	125	⅓	107008.00	P1102-48	11	6.2	500	13.67	13.17
288	70	⅓	107007.00	P1102-48	6	6.2	400	13.67	13.17
22	1105	½	107013.00	P1103-48	79	8.8	700	14.17	12.67
41	700	½	107017.00	P1102-48	42	8.8	650	14.17	12.67
59	496	½	107016.00	P1102-48	29	8.8	625	14.17	12.67
91	336	½	107015.00	P1102-48	19	8.8	575	14.17	12.67
133	229	½	107014.00	P1102-48	13	8.8	525	14.17	12.67

**BISON/DAYTON DIRECT INTERCHANGE**



ALL DIMENSIONS IN INCHES

**P1100 SERIES AC GEARMOTORS**  
THREE PHASE • FRACTIONAL HP • TEFC • 230/460V

Output RPM	F.L. Torque (Lb.In.)	Input HP	Catalog Number	Type & Frame	Ratio to 1	F.L. Amps 230V AC	Overhung Load Lbs.	DIMENSIONS XL XH Inches	
18	1089	⅓	107025.00	P1103-48	95	1.6	700	12.92	11.42
26	752	⅓	107026.00	P1103-48	66	1.6	650	12.92	11.42
41	461	⅓	107027.00	P1102-48	42	1.6	650	12.92	11.42
59	330	⅓	107028.00	P1102-48	29	1.6	625	12.92	11.42
91	224	⅓	107029.00	P1102-48	19	1.6	575	12.92	11.42
157	125	⅓	107030.00	P1102-48	11	1.6	500	12.92	11.42
288	70	⅓	107031.00	P1102-48	6	1.6	400	12.92	11.42
22	1105	½	107032.00	P1103-48	79	2.0	700	13.42	11.92
41	700	½	107033.00	P1102-48	42	2.0	650	13.42	11.92
59	496	½	107034.00	P1102-48	29	2.0	625	13.42	11.92
91	336	½	107035.00	P1102-48	19	2.0	575	13.42	11.92
133	229	½	107036.00	P1102-48	13	2.0	500	13.42	11.92
288	100	½	107037.00	P1102-48	6	2.0	400	13.42	11.92