

**SPEEDMASTER®
INVERTER-DUTY/
VECTOR DUTY MOTORS**
2000:1 CONSTANT TORQUE



Features:

- Class H inverter-rated IRIS™ insulation system
- Constant torque operation from 0 to base RPM rating on Vector Drives
- Constant HP operation to twice base RPM rating for 143T-256T frame, 1.5 x base RPM for all other sizes
- Designed for optimum performance with IGBT inverters – not for across-the-line starting
- C-face with rigid base through 100HP
- Normally closed thermostats (one per phase)
- Continuous duty at 40° C ambient
- 1.0 Service Factor (Class “B” rise on TEBC motors)
- Premium quality, cast iron frame and endbells
- 284T and larger are blower-cooled with a separately powered three-phase blower motor to provide added cooling at low speeds
- Ball bearings (Roller bearings available 360-frame and larger)
- Field convertible to F2 mounting
- Encoder provisions included on opposite drive end (See Encoder Kits this page)
- UL Recognized and CSA Certified
- Three-year warranty
- Meets NEMA MG1, parts 30 and 31

Applications:

Designed for inverter or vector applications where up to a 2000:1 constant torque speed range is required. Typical uses include: material handling, machine tools, conveyors, crane and hoist, metal processing, test stands, pumps, compressors, textile processing, and other industrial machinery installed in dusty or dirty environments.

ENCODER KITS* FOR SPEEDMASTER® 2000:1 MOTORS

Description	Enclosure	Frame	Brand/Model	PPR	Catalog Number
Encoders					
Modular Mount, 5-15 VDC, with EPIC connector	TENV	143-256T	Northstar SL56	1024	E175927.00
Shaft Mount, 5-26 VDC, with 10 pin connector	TENV	143-256T	Dynapar HS35	1024	E175928.00
Shaft Mount, 5-26 VDC, with 10 pin connector	TENV	143-256T	BEI HS35	1024	E175929.00
Shaft Mount, 5-26 VDC, with 10 pin connector	TENV	143-256T	Dynapar HS35	2048	E175930.00
Shaft Mount, 5-26 VDC, with 10 pin connector	TENV	143-256T	BEI HS35	2048	E175931.00
Modular Mount, 5-15 VDC (Encoder Conduit Box Required)	TEBC	284-449T	Northstar SL56	1024	E175921.00
Shaft Mount, 5-26 VDC (Encoder Conduit Box Required)	TEBC	284-449T	Dynapar HS35	1024	E175922.00
Shaft Mount, 5-26 VDC (Encoder Conduit Box Required)	TEBC	284-449T	BEI HS35	1024	E175923.00
Shaft Mount, 5-26 VDC (Encoder Conduit Box Required)	TEBC	284-449T	Dynapar HS35	2048	E175924.00
Shaft Mount, 5-26 VDC (Encoder Conduit Box Required)	TEBC	284-449T	BEI HS35	2048	E175925.00
Conduit Box Required for all TEBC Units	—	—	—	—	ECB175926.00

* Shipped separately for field installation.

THREE PHASE • TOTALLY ENCLOSED • RIGID BASE

HP	SYN RPM 60 Hz	NEMA Frame	Catalog Number	App. Wgt. (lbs.)	Voltage	F.L. Amps 230V	RPM Max.†	“C” Dim. (Inches)
1	1800	143TC	810548.00●	61	230/460	3.0	5400	13.68
1½	1800	145TC	810547.00●	68	230/460	4.6	5400	14.68
2	1800	145TC	810546.00●	70	230/460	6.0	5400	14.68
3	1800	182TC	811320.00●	110	230/460	8.0	5400	16.68
5	1800	184TC	811322.00●	118	230/460	13.4	5400	17.69
7½	1800	213TC	810157.00●	180	230/460	21.0	4200	20.56
10	1800	215TC	810140.00●	290	230/460	26.0	4200	22.74
15	1800	254TC	810066.00●	320	230/460	39.0	4200	25.12
	1200	284TC	810068.00 A	440	230/460	40.0	3600	37.48
20	1800	256TC	810007.00●	435	230/460	52.0	4200	27.13
	1200	286TC	810001.00 A	450	230/460	52.4	3600	37.48
25	1800	284TC	810011.00 A	438	230/460	65.0	3600	37.48
	1200	324TC	810003.00	620	230/460	67.0	3600	40.41
30	1800	286TC	810015.00	520	230/460	74.0	4200	38.98
	1200	326TC	810005.00	700	230/460	82.0	3600	41.91
40	1800	324TC	810019.00 A	620	230/460	100.0	3600	40.41
	1200	364TC	810096.00	975	230/460	104.0	2700	42.78
50	1800	326TC	810023.00 A	640	230/460	120.0	3600	41.91
	1200	365TC	810097.00	1029	230/460	180.0	2700	43.78
60	1800	364TC	810027.00	975	230/460	147.0	2700	42.78
	1200	404TC	810098.00 A	1322	230/460	142.0	2700	46.72
75	1800	365TC	810031.00	1050	230/460	180.0	2700	43.78
	1200	405TC	810099.00 A	1350	230/460	180.0	2700	49.28
100	1800	405TC	810087.00	1400	230/460	230.0	2700	49.28
	1200	444TC	811367.00+	2050	230/460	250.0	2700	52.72
125	1800	444T	811369.00+	2000	460	138.0①	2700	52.72
150	1800	445T	811371.00+A	2321	460	170.0①	2700	54.72
200	1800	445T	810503.00+A	2450	460	230.0①	2700	54.72
250	1800	449T	811516.00+A	3210	460	295.0①	2700	63.21
300	1800	449T	811529.00+A	3410	460	330.0①	2700	63.21
350	1800	449T	811530.00+A	3520	460	385.0①	2700	63.21

- These motors are Totally Enclosed, Non-Ventilated (TENV)—Others are Totally Enclosed Blower-Cooled (TEBC).
- † Contact LEESON for applications requiring higher speeds.
- + Contact LEESON for production leadtime on these items.
- ① Amps at 460 volts
- A Subject to Availability.

SHADED FRAME INDICATES CAST IRON CONSTRUCTION

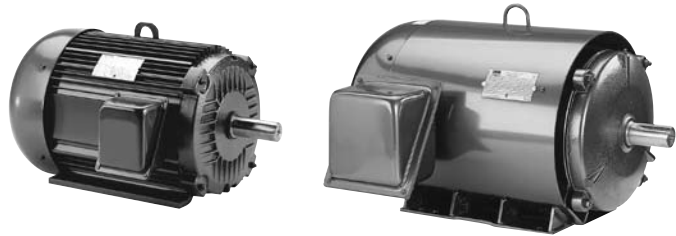
Specifications are subject to change without notice

TEFC 15 TO 60 HZ CONSTANT TORQUE INVERTER DUTY

230/460 & 460 VOLTS • 3-PHASE
FOOT MOUNT & C-FACE
1/3 TO 400 HP

Features:

- 4:1 Constant torque speed range at continuous duty of 15-60 Hz.
- Variable torque speed range with open loop drive of 0-60 Hz.
- Constant horsepower speed range of 2x base speed (56-256T frames) or 1.5x base speed* (284T-449T frames).
- Wider speed ranges possible on intermittent duty
- Ultimate Spike Defense™ Insulation System
- 1.00 service factor on PWM waveform, 1.15 service factor or better on sine-wave power.
- Precision dynamic balanced rotor assembly
- Thermal overload protection (Class F thermostats)
- Made in the U.S.A.



Applications:

For use in constant torque (conveyors, machine tools) or variable torque (pumps, fans) variable speed applications within the stated speed range of the motor.

In a very small percentage of installations, bearing currents can develop in motors operated by PWM-based adjustable-speed drives. Contact your local sales office to review ways of eliminating bearing currents.

* Actual speed not to exceed "RPM MAX" listed for specific motor.

FOOT MOUNT

HP	SYN RPM @ 60 Hz	RPM Max	Frame	FL Nom Eff (%)	Volts	Model Number	Product Number	Approx Shpg Wght (lbs)
1/3	1800	4000	56	72.0	230/460	SRF4S0.33T61Q40	LM22644	28
	3600	4000	56	70.0	230/460	SRF2S0.5T61Q40	LM22646	28
1/2	1800	4000	56	74.0	230/460	SRF4S0.5T61Q40	LM22648	28
	1200	4000	56	70.0	230/460	SRF6S0.5T61Q40	LM22650	28
3/4	3600	4000	56	74.0	230/460	SRF2S0.75T61Q40	LM22652	28
	1800	4000	56	77.0	230/460	SRF4S0.75T61Q40	LM22654	28
	1200	4000	56	72.0	230/460	SRF6S0.75T61Q40	LM22656	36
1	3600	4000	56	75.5	230/460	SRF2S1T61Q40	LM22658	28
	1800	4000	56	78.5	230/460	SRF4S1T61Q40	LM22660	28
	1800	4000	143T	82.5	230/460	SSF4P1T61Q40	LM26097	46
	1200	4000	145T	80.0	230/460	SSF6P1T61Q40	LM26383	51
1 1/2	3600	4000	56	78.5	230/460	SRF2S1.5T61Q40	LM22662	28
	3600	4000	143T	82.5	230/460	SSF2P1.5T61Q40	TBD	46
	1800	4000	56H	80.0	230/460	SRF4S1.5T61Q40	LM22664	28
	1800	4000	145T	84.0	230/460	SSF4P1.5T61Q40	LM26098	51
	1200	4000	182T	85.5	230/460	AAF6P1.5T61Q40	LM21188	83
2	3600	4000	56H	78.5	230/460	SRF2S2T61Q40	LM22666	36
	3600	4000	145T	84.0	230/460	SSF2P2T61Q40	TBD	51
	1800	4000	145T	84.0	230/460	SSF4P2T61Q40	LM25991	51
	1200	4000	184T	86.5	230/460	AAF6P2T61Q40	LM21191	92
3	3600	4000	182T	85.5	230/460	AAF2P3T61Q40	LM21189	83
	1800	4000	182T	87.5	230/460	AAF4P3T61Q40	LM21190	83
	1200	4000	213T	87.5	230/460	AF6P3T61Q40	LM21194	127
5	3600	4000	184T	87.5	230/460	AAF2P5T61Q40	LM21192	92
	1800	4000	184T	87.5	230/460	AAF4P5T61Q40	LM21193	92
	1200	4000	215T	87.5	230/460	AAF6P5T61Q40	LM21197	138

Product numbers in red are STOCK items.

Specifications are subject to change without notice

TEFC 15 TO 60 HZ CONSTANT TORQUE INVERTER DUTY



**230/460 & 460 VOLTS • 3-PHASE
FOOT MOUNT & C-FACE
1/3 TO 400 HP**

AC MOTORS

FOOT MOUNT (cont'd)

HP	SYN RPM @ 60 Hz	RPM Max	Frame	FL Nom Eff (%)	Volts	Model Number	Product Number	Approx Shpg Wght (lbs)
7 1/2	3600	4600	G213T	88.5	230/460	AF2P7.5T61Q40	LM21195	127
	1800	4600	213T	89.5	230/460	AF4P7.5T61Q40	LM21196	127
	1200	4400	254T	89.5	230/460	AAF6P7.5T61Q40	LM21200	209
10	3600	4600	G215T	89.5	230/460	AF2P10T61Q40	LM21198	138
	1800	4600	215T	89.5	230/460	AF4P10T61Q40	LM21199	138
	1200	4400	256T	89.5	230/460	AAF6P10T61Q40	LM21203	236
15	3600	4400	G254T	90.2	230/460	AAF2P15T61Q40	LM21201	209
	1800	4400	254T	91.0	230/460	AF4P15T61Q40	LM21202	209
	1200	4200	284T	90.2	230/460	AF6P15T61YQ40	LM21206	363
20	3600	4400	256T	90.2	230/460	AF2P20T61Q40	LM21204	236
	1800	4400	256T	91.0	230/460	AF4P20T61Q40	LM21205	236
	1200	4200	286T	90.2	230/460	AF6P20T61YQ40	LM21209	408
25	3600	4200	284TS	91.0	230/460	AF2P25TS61YQ40	LM21207	363
	1800	4200	284T	92.4	230/460	AF4P25T61YQ40	LM21208	363
	1200	4000	324T	91.7	230/460	SF6P25T61YQ40	LM21212	504
30	3600	4200	286TS	91.0	230/460	AF2P30TS61YQ40	LM21210	408
	1800	4200	286T	92.4	230/460	AF4P30T61YQ40	LM21211	408
	1200	4000	326T	91.7	230/460	SF6P30T61YQ40	LM21215	570
40	3600	4000	324TS	91.7	230/460	SF2P40TS61YQ40	LM21213	504
	1800	4000	324T	93.0	230/460	SF4P40T61YQ40	LM21214	504
	1200	3800	364T	93.0	230/460	SF6P40T61YQ40	LM21218	765
50	3600	4000	326TS	92.4	230/460	SF2P50TS61YQ40	LM21216	558
	1800	4000	326T	93.0	230/460	SF4P50T61YQ40	LM21217	558
	1200	3800	365T	93.0	230/460	SF6P50T61YQ40	LM21221	822
60	3600	3800	364TS	93.0	230/460	SF2P60TS61YQ40	LM21219	765
	1800	3800	364T	93.6	230/460	SF4P60T61YQ40	LM21220	765
	1200	3600	404T	93.6	230/460	SF6P60T61YQ40	LM21224	918
75	3600	3800	365TS	93.0	230/460	SF2P75TS61YQ40	LM21222	822
	1800	3800	365T	94.1	230/460	SF4P75T61YQ40	LM21223	822
	1200	3600	405T	93.6	230/460	SF6P75T61YQ40	LM21225	1002
100	3600	3600	405TS	93.6	230/460	SF2P100TS61YQ40	LM21226	1002
	1800	3600	405T	94.5	230/460	SF4P100T61YQ40	LM21227	1002
	1200	3000	444T	94.1	460	SF6P100T64YQ40	LM21228	1351
125	3600	3600	444TS	94.5	460	SF2P125TS64YQ40	LM21229	1351
	1800	3000	444T	94.5	460	SF4P125T64YQ40	LM21230	1351
	1200	3000	445T	94.1	460	SF6P125T64YQ40	LM21231	1504
150	3600	3600	445TS	94.5	460	SF2P150TS64YQ40	LM21232	1504
	1800	3000	445T	95.0	460	SF4P150T64YQ40	LM21233	1504
	1200	3000	445T	95.0	460	SF6P150T64YQ40	LM21234	1504
200	3600	3600	445TS	95.0	460	SF2P200TS64YQ40	LM21235	1504
	1800	3000	445T	95.0	460	SF4P200T64YQ40	LM21236	1504
	1200	3000	447T	95.0	460	SF6P200T64YQ40	LM21237	1812
250	3600	3600	449TS	95.4	460	SF2P250TS64YQ40	LM21240	2185
	1800	2800	447T	95.0	460	SF4P250T64YQ40	LM21238	1812

Product numbers in red are STOCK items.

Specifications are subject to change without notice



TEFC 15 TO 60 HZ CONSTANT TORQUE INVERTER DUTY

230/460 & 460 VOLTS • 3-PHASE
FOOT MOUNT & C-FACE
1/3 TO 400 HP

FOOT MOUNT (cont'd)

HP	SYN RPM @ 60 Hz	RPM Max	Frame	FL Nom Eff (%)	Volts	Model Number	Product Number	Approx Shpg Wght (lbs)
300	3600	3600	449TS	95.4	460	SF2P300TS64YQ40	LM21242	2185
	1800	2800	449T	95.4	460	SF4P300T64YQ40	LM21239	2185
350	3600	3600	449TS	95.8	460	SF2B350TS64YQ40	LM21243	2185
	1800	2800	449T	95.4	460	SF4P350T64YQ40	LM21244	2185

C-FACE WITH FEET

HP	SYN RPM @ 60 Hz	RPM Max	Frame	FL Nom Eff (%)	Volts	Product Model Number	Approx Shpg Number	Wght (lbs)
1/3	1800	4000	56C	72.0	230/460	SRF4S0.33TC61Q40	LM22645	33
1/2	3600	4000	56C	70.0	230/460	SRF2S0.5TC61Q40	LM22647	33
	1800	4000	56C	74.0	230/460	SRF4S0.5TC61Q40	LM22649	33
	1200	4000	56C	70.0	230/460	SRF6S0.5TC61Q40	LM22651	33
3/4	3600	4000	56C	74.0	230/460	SRF2S0.75TC61Q40	LM22653	33
	1800	4000	56C	77.0	230/460	SRF4S0.75TC61Q40	LM22655	33
	1200	4000	56C	72.0	230/460	SRF6S0.75TC61Q40	LM22657	28
1	3600	4000	56C	75.5	230/460	SRF2S1TC61Q40	LM22659	33
	1800	4000	56C	78.5	230/460	SRF4S1TC61Q40	LM22661	28
	1800	4000	143TC	82.5	230/460	SSF4P1TC61Q40	LM26081	52
	1200	4000	145TC	80.0	230/460	SSF6P1TC61Q40	LM26323	57
1 1/2	3600	4000	56C	78.5	230/460	SRF2S1.5TC61Q40	LM22663	28
	3600	4000	143TC	82.5	230/460	SSF2P1.5TC61Q40	TBD	52
	1800	4000	56HC	80.0	230/460	SRF4S1.5TC61Q40	LM22665	36
	1800	4000	145TC	84.0	230/460	SSF4P1.5TC61Q40	LM26008	57
	1200	4000	182TC	85.5	230/460	AAF6P1.5TC61Q40	LM22822	95
2	3600	4000	56HC	78.5	230/460	SRF2S2TC61Q40	LM22667	36
	3600	4000	145TC	84.0	230/460	SSF2P2TC61Q40	TBD	57
	1800	4000	145TC	84.0	230/460	SSF4P2TC61Q40	LM25962	57
	1200	4000	184TC	86.5	230/460	AAF6P2TC61Q40	LM22825	104
3	3600	4000	182TC	85.5	230/460	AAF2P3TC61Q40	LM22826	95
	1800	4000	182TC	87.5	230/460	AAF4P3TC61Q40	LM22827	95
	1200	4600	213TC	87.5	230/460	AF6P3TC61Q40	LM22828	138
5	3600	4000	184TC	87.5	230/460	AAF2P5TC61Q40	LM22829	104
	1800	4000	184TC	87.5	230/460	AAF4P5TC61Q40	LM22830	104
	1200	4600	215TC	87.5	230/460	AF6P5TC61Q40	LM31434	149
7 1/2	3600	4600	G213TC	88.5	230/460	AF2P7.5TC61Q40	LM22832	138
	1800	4600	213TC	89.5	230/460	AAF4P7.5TC61Q40	LM22833	138
	1200	4400	254TC	89.5	230/460	AF6P7.5TC61Q40	LM22834	221
10	3600	4600	G215TC	89.5	230/460	AF2P10TC61Q40	LM22835	149
	1800	4600	215TC	89.5	230/460	AF4P10TC61Q40	LM22836	149
	1200	4400	256TC	89.5	230/460	AF6P10TC61Q40	LM22837	248
15	3600	4400	G254TC	90.2	230/460	AF2P15TC61Q40	LM22838	221
	1800	4400	254TC	91.0	230/460	AF4P15TC61Q40	LM22839	221
20	3600	4400	256TC	90.2	230/460	AF2P20TC61Q40	LM22840	248
	1800	4400	256TC	91.0	230/460	AF4P20TC61Q40	LM22841	248

Product numbers in red are STOCK items.

Specifications are subject to change without notice

ODP • 30 TO 60 HZ CONSTANT TORQUE INVERTER DUTY



230/460 & 460 VOLTS • 3-PHASE
FOOT MOUNT & C-FACE
1/3 TO 400 HP

Features:

- 10:1 Constant torque speed range at continuous duty of 6-60 Hz.
- Variable torque speed range with open loop drive of 0-60 Hz.
- Constant horsepower speed range of 2x base speed (56-256T frames) or 1.5x base speed* (284T-449T frames).
- Ultimate Spike Defense™ Insulation System
- 1.00 service factor on PWM waveform, 1.15 service factor or better on sine-wave power.
- Precision dynamic balanced rotor assembly
- Thermal overload protection (Class F thermostats)
- Warranty: 42 months from date of manufacture and 36 months from date of installation which ever period expires first.
- Made in the U.S.A.



Applications:

For use in constant torque (conveyors, machine tools) or variable torque (pumps, fans) variable speed applications within the stated speed range of the motor.

* Actual speed not to exceed "RPM MAX" listed for specific motor.

FOOT MOUNT

HP	SYN RPM @ 60 Hz	RPM Max	Frame	FL Nom Eff (%)	Volts	Model Number	Product Number	Approx Shpg Wght (lbs)
1	1800	5000	143T	82.5	230/460	SSD4P1T61Q40	LM21148	55
1 1/2	1800	5000	145T	84.0	230/460	SSD4P1.5T61Q40	LM21151	68
2	1800	5000	145T	84.0	230/460	SSD4P2T61Q40	LM21153	68
3	1800	4800	182T	86.5	230/460	SSD4P3T61Q40	LM21157	82
5	1800	4800	184T	87.5	230/460	SSD4P5T61Q40	LM21159	71
7 1/2	1800	4600	213T	88.5	230/460	SSD4P7.5T61Q40	LM21162	141
10	1800	4600	215T	89.5	230/460	SSD4P10T61Q40	LM21165	168
	1200	4400	256T	90.2	230/460	SSD6P10T61Q40	LM21170	255
15	1800	4400	254T	91.0	230/460	SSD4P15T61Q40	LM21168	245
20	1800	4400	256T	91.0	230/460	SSD4P20T61Q40	LM21171	255
	1800	4000	284T	91.7	230/460	SD4P25T61YQ40	LM21174❖	N/A
25	1800	4000	284T	91.7	230/460	CCD4P25T61YQ40	LM29579	350
	1800	4000	286T	92.4	230/460	SD4P30T61YQ40	LM21177❖	N/A
30	1800	4000	286T	92.4	230/460	CCD4P30T61YQ40	LM29936	400
	1800	4000	324T	93.0	230/460	SD4P40T61YQ40	LM21180	469
40	1800	4000	324T	93.0	230/460	SD4P40T61YQ40	LM21180	469
50	1800	4000	326T	93.0	230/460	SD4P50T61YQ40	LM21118	522
60	1800	3600	364T	94.0	230/460	SD4P60T61YQ40	LM21121	595
75	1800	3800	365T	94.1	230/460	SD4P75T61YQ40	LM21124	763
100	1800	3600	404T	94.1	230/460	SD4P100T61YQ40	LM21127	882
125	1800	3600	405T	94.5	230/460	SD4P125T61YQ40	LM30727	958

❖ Contact your local sales office for availability.

Product numbers in red are STOCK items.

Specifications are subject to change without notice



TOTALLY ENCLOSED • 0 TO 60 HZ CONSTANT TORQUE INVERTER DUTY CTAC®

230/460 & 460 VOLTS • 3-PHASE
FOOT MOUNT & C-FACE
1/3 TO 200 HP

Features:

- 2000:1 constant torque speed range of 0-60 Hz at continuous duty (range on RF models is 6-60Hz).
- Variable torque speed range of 0-60 Hz.
- Constant horsepower speed range of 2x base speed (56-256T frames) or 1.5x base speed* (284T-445T frames).
- Wider speed ranges possible on intermittent duty
- Ultimate Spike Defense™ Insulation System
- Ideally suited for IGBT power
- 1.00 SF, 40°C ambient on PWM waveform
- C-Face standard on frames 56-256T
- Precision dynamic balanced rotor assembly
- Over temperature protection (Class F thermostat)
- Provision for mounting feedback device - Q10 models
- TEBC - 3 phase blower motor standard
- Warranty on CTAC motor, 42 months from date of manufacture and 36 months from date of installation which ever period expires first.

Warranty on TEBC blower motor 30 months from date of manufacture and 24 months from date of installation which ever period expires first.

- Made In U.S.A.

Applications:

Suitable for use in extruders, conveyors, machine tools and other process industries with constant torque, variable speed loads.

In a very small percentage of installations, bearing currents can develop in motors operated by PWM-based adjustable-speed drives. Contact your local sales office to review ways of eliminating bearing currents.

* Actual speed not to exceed "RPM MAX" listed for specific motor.



C-FACE WITH FEET (56-256T)

HP	SYN RPM @ 60 Hz	RPM Max	Frame	Enclosure	Volts	Model Number	Product Number	Approx Shpg Wght (lbs)
1/3	1800	4000	56C	TEFC	230/460	SRF4S0.33TC61Q20	LM10336	26
1/2	1800	4000	56C	TEFC	230/460	SRF4S0.5TC61Q20	LM24264	28
	1200	4000	56HC	TEFC	230/460	SRF6S0.5TC61Q20	LM10338	41
3/4	1800	4000	56HC	TEFC	230/460	SRF4S0.75TC61Q20	LM10339	36
1	1800	4000	56HC	TEFC	230/460	SRF4S1TC61Q20	LM10340	41
	1800	5000	145TC	TENV	230/460	SSN4S1TC61Q10	LM26359	62
	1200	4800	182TC	TENV	230/460	AAN6S1TC61Q10	LM06103	78
	900	4800	184TC	TENV	230/460	AAN8S1TC61Q10	LM06105	90
1 1/2	1800	5000	145TC	TENV	230/460	SSN4S1.5TC61Q10	LM26233	65
	1200	4800	184TC	TENV	230/460	AAN6S1.5TC61Q10	LM06109	90
	900	4600	213TC	TENV	230/460	AN8S1.5TC61Q10	LM06111	121
2	1800	4800	182TC	TENV	230/460	AAN4S2TC61Q10	LM06113	74
	1200	4600	213TC	TENV	230/460	AN6S2TC61Q10	LM06115	121
	900	4600	215TC	TENV	230/460	AN8S2TC61Q10	LM06117	121

Product numbers in red are STOCK items.

Specifications are subject to change without notice

**TOTALLY ENCLOSED • 0 TO 60 HZ CONSTANT TORQUE
INVERTER DUTY CTAC®**



**230/460 & 460 VOLTS • 3-PHASE
FOOT MOUNT & C-FACE
1/3 TO 200 HP**

AC MOTORS

C-FACE WITH FEET (56-256T) & FOOT MOUNT (284T-445T)

HP	SYN RPM @ 60 Hz	RPM Max	Frame	Enclosure	Volts	Model Number	Product Number	Approx Shpg Wght (lbs)
3	1800	4800	184TC	TENV	230/460	AAN4S3TC61Q10	LM06119	86
	1200	4600	215TC	TENV	230/460	AN6S3TC61Q10	LM06121	135
	900	4400	254TC	TENV	230/460	AN8S3TC61Q10	LM06123	186
5	1800	4600	213TC	TENV	230/460	AN4S5TC61Q10	LM06125	115
	1200	4400	254TC	TENV	230/460	AN6S5TC61Q10	LM06127	200
	900	4400	256TC	TENV	230/460	AN8S5TC61Q10	LM06129	219
7 1/2	1800	4600	215TC	TENV	230/460	AN4S7.5TC61Q10	LM06131	115
	1200	4400	256TC	TENV	230/460	AN6S7.5TC61Q10	LM06133	219
10	1800	4400	256TC	TENV	230/460	AN4S10TC61Q10	LM06135	211
15	1200	4200	284T	TEBC	230/460	SB6H15T61Q10	LM03140	350
20	1200	4200	286T	TEBC	230/460	SB6H20T61Q10	LM03156	420
25	1800	4200	284T	TEBC	230/460	SB4H25T61Q10	LM03188	350
	1200	4000	324T	TEBC	230/460	SB6H25T61Q10	LM03204	490
30	1800	4200	286T	TEBC	230/460	SB4H30T61Q10	LM03236	420
	1200	4000	326T	TEBC	230/460	SB6H30T61Q10	LM03252	550
40	1800	4000	324T	TEBC	230/460	SB4H40T61Q10	LM03284	420
	1200	3800	364T	TEBC	230/460	SB6H40T61YQ10	LM03300	670
50	1800	4000	326T	TEBC	230/460	SB4H50T61Q10	LM03332	490
	1200	3800	365T	TEBC	230/460	SB6H50T61YQ10	LM03348	740
60	1800	3800	364T	TEBC	230/460	SB4H60T61YQ10	LM03376	670
	1200	3600	404T	TEBC	230/460	SB6H60T61YQ10	LM03396	880
75	1800	3800	365T	TEBC	230/460	SB4H75T61YQ10	LM03424	740
	1200	3600	405T	TEBC	230/460	SB6H75T61YQ10	LM03444	1000
100	1800	3600	405T	TEBC	230/460	SB4H100T61YQ10	LM03472	1000
	1200	3000	444T	TEBC	460	SB6H100T64YQ10	LM03490	1290
125	1800	3000	444T	TEBC	460	SB4H125T64YQ10	LM03516	1290
	1200	3000	445T	TEBC	460	SB6H125T64YQ10	LM03536	1480
150	1800	3000	445T	TEBC	460	SB4H150T64YQ10	LM03564	1480
200	1800	3000	445T	TEBC	460	SB4H200T64YQ10	LM03596	1480

Product numbers in red are STOCK items.

Specifications are subject to change without notice

TOTALLY ENCLOSED • 0 TO 60 HZ CONSTANT TORQUE VECTOR DUTY CTAC®

FOOT MOUNT & C-FACE
1/3 TO 200 HP

Features:

- 2000:1 constant torque speed range of 0-60 Hz at continuous duty with closed-loop drive.
- Variable torque speed range of 0-60 Hz.
- Constant horsepower speed range of 2x base speed (56-256T frames) or 1.5x base speed* (284T-445T frames).
- Ultimate Spike Defense™ Insulation System
- Ideally suited for IGBT power
- 1.00 SF, 40°C ambient on PWM waveform
- C-Face standard on frames 56-256T
- Precision dynamic balanced rotor assembly
- Over temperature protection (Class F thermostat)
- 1024 ppr encoder with differential line driver
- Separate terminal box or conduit with terminal block for feedback termination
- TEBC – 3 phase blower motor standard
- Warranty: (CTAC motor) 42 months from date of manufacture and 36 months from date of installation which ever period expires first. Feedback device and blower motor (TEBC) 30 months from date of manufacture and 24 months from date of installation which ever period expires first.
- Made In U.S.A.



Applications:

For use in demanding industrial applications where premium construction and performance are required. Suitable for use in extruders, conveyors, machine tools and other process industries with constant torque, variable speed loads.

In a very small percentage of installations, bearing currents can develop in motors operated by PWM-based adjustable-speed drives. Contact your local sales office to review ways of eliminating bearing currents.

* Actual speed not to exceed "RPM MAX" listed for specific motor.

C-FACE WITH FEET (56-256T)

HP	SYN RPM @ 60 Hz	RPM Max	Frame	Enclosure	Volts	Model Number	Product Number	Approx Shpg Wght (lbs)
1/3	1800	5000	56C	TENV	230/460	SRN4S0.33TC61Q15	LM10346	43
1/2	1800	5000	56C	TENV	230/460	SRN4S0.5TC61Q15	LM10347	43
	1200	5000	56HC	TENV	230/460	SRN6S0.5TC61Q15	LM10348	43
3/4	1800	5000	56HC	TENV	230/460	SRN4S0.75TC61Q15	LM10349	54
1	1800	5000	56HC	TENV	230/460	SRN4S1TC61Q15	LM10350	54
	1800	5000	145TC	TENV	230/460	SSN4S1TC61Q15	LM26109	82
	1200	4800	182TC	TENV	230/460	AAN6S1TC61Q15	LM03973	98
	900	4800	184TC	TENV	230/460	AAN8S1TC61Q15	LM03975	110
1 1/2	1800	5000	145TC	TENV	230/460	SSN4S1.5TC61Q15	LM26278	85
	1200	4800	184TC	TENV	230/460	AAN6S1.5TC61Q15	LM03981	110
	900	4600	213TC	TENV	230/460	AN8S1.5TC61Q15	LM03983	141
2	1800	4800	182TC	TENV	230/460	AAN4S2TC61Q15	LM03987	98
	1200	4600	213TC	TENV	230/460	AN6S2TC61Q15	LM03989	141
	900	4600	215TC	TENV	230/460	AAN8S2TC61Q15	LM03991	141

Product numbers in red are STOCK items.

Product numbers in red are STOCK items.

Specifications are subject to change without notice

**TOTALLY ENCLOSED • 0 TO 60 HZ CONSTANT TORQUE
VECTOR DUTY CTAC®**



**FOOT MOUNT & C-FACE
1/3 TO 200 HP**

C-FACE WITH FEET (56-256T) & FOOT MOUNT (284T-445T)

HP	SYN RPM @ 60 Hz	RPM Max	Frame	Enclosure	Volts	Model Number	Product Number	Approx Shpg Wght (lbs)
3	1800	4800	184TC	TENV	230/460	AAN4S3TC61Q15	LM03995	110
	1200	4600	215TC	TENV	230/460	AN6S3TC61Q15	LM03997	155
	900	4400	254TC	TENV	230/460	AN8S3TC61Q15	LM03999	206
5	1800	4600	213TC	TENV	230/460	AAN4S5TC61Q15	LM04003	115
	1200	4400	254TC	TENV	230/460	AN6S5TC61Q15	LM04005	220
	900	4400	256TC	TENV	230/460	AN8S5TC61Q15	LM04007	239
7 1/2	1800	4600	215TC	TENV	230/460	AN4S7.5TC61Q15	LM31463	155
	1200	4400	256TC	TENV	230/460	AN6S7.5TC61Q15	LM04013	239
10	1800	4400	256TC	TENV	230/460	AN4S10TC61Q15	LM30572	235
15	1200	4200	284T	TEBC	230/460	CCB6S15T61Q15	LM31961	490
20	1200	4200	286T	TEBC	230/460	SB6H20T61Q15	LM03157	420
25	1800	4200	284T	TEBC	230/460	SB4H25T61Q15	LM03189	350
	1200	4000	324T	TEBC	230/460	SB6H25T61Q15	LM03205	490
30	1800	4200	286T	TEBC	230/460	SB4H30T61Q15	LM03237	420
	1200	4000	326T	TEBC	230/460	SB6H30T61Q15	LM03253	550
40	1800	4000	324T	TEBC	230/460	SB4H40T61Q15	LM03285	550
	1200	3800	364T	TEBC	230/460	SB6H40T61Q15	LM03301	670
50	1800	4000	326T	TEBC	230/460	SB4H50T61Q15	LM03333	550
	1200	3800	365T	TEBC	230/460	SB6H50T61YQ15	LM03349	740
60	1800	3800	364T	TEBC	230/460	SB4H60T61YQ15	LM03377	690
	1200	3600	404T	TEBC	230/460	SB6H60T61YQ15	LM03397	1000
75	1800	3800	365T	TEBC	230/460	SB4P75T61YQ15	LM03425	740
	1200	3600	405T	TEBC	230/460	SB6H75T61YQ15	LM03445	1000
100	1800	3600	405T	TEBC	230/460	SB4H100T61YQ15	LM03473	1000
	1200	3000	444T	TEBC	460	SB6H100T64YQ15	LM03491	1290
125	1800	3000	444T	TEBC	460	SB4H125T64YQ15	LM03517	1290
	1200	3000	445T	TEBC	460	SB6H125T64YQ15	LM03537	1480
150	1800	3000	445T	TEBC	460	SB4H150T64YQ15	LM03565	1490
200	1800	3000	445T	TEBC	460	SB4H200T64YQ15	LM03597	1500

Product numbers in red are STOCK items.

Specifications are subject to change without notice