



575 VOLT • THREE PHASE • TEFC • RIGID BASE

HP	SYN RPM 60 Hz	NEMA Frame	Catalog Number	App. Wgt. (lbs.)	Voltage	F.L. Amps 575 V.	% F.L. Eff.	"C" Dim. (Inches)
1/2	3600	56	110714.00●	25	575	0.6	82.5	10.40
	1800	56	110199.00●†	25	575	0.8	78.5	9.88
	1800	S56	101051.00	24	575	0.8	68.0	9.94
3/4	3600	56	110354.00	22	575	0.9	75.5	10.81
	1800	56	110178.00	22	575	1.1	77.0	10.81
	1200	56	111394.00	30	575	1.2	75.5	11.81
1	3600	56	110715.00	24	575	1.3	77.0	10.81
	1800	56	110206.00	24	575	1.5	77.0	11.31
	1800	143T	121937.00	32	575	1.1	85.5	13.25
	1200	145T	121938.00	47	575	1.4	82.5	13.75
1½	3600	145T	121939.00	33	575	1.6	84.0	13.25
	1800	56	110893.00	30	575	2.0	78.5	11.81
	1800	145T	121940.00	34	575	1.8	86.5	13.75
	1200	182T	132251.00	89	575	2.5	87.5	15.96
2	3600	145T	121941.00	44	575	2.1	85.5	13.75
	1800	145T	121942.00	45	575	2.2	86.5	14.76
	1200	184T	132252.00	92	575	2.9	88.5	15.96
3	3600	145T	171624.60	66	575	3.0	86.5	13.96
	1800	182T	132253.00	80	575	3.3	89.5	14.96
5	3600	184T	132254.00	88	575	4.8	88.5	16.46
	1800	184T	132255.00	94	575	5.2	89.5	15.96
7½	3600	213T	170196.60	156	575	7.4	90.2	19.84
	1800	213T	141116.00	144	575	8.2	91.7	18.7
10	3600	215T	170197.60	181	575	9.5	91.7	19.61
	1800	215T	170212.60	177	575	10.1	91.7	19.61
15	3600	254T	170198.60	282	575	13.8	92.4	23.19
	1800	254T	170116.60	280	575	14.8	92.4	23.19
20	3600	256T	170199.60	316	575	18.4	92.4	24.92
	1800	256T	170117.60	322	575	19.2	93.0	24.92
25	3600	284TS	170224.60	383	575	22.0	93.0	24.88
	1800	284T	170118.60	385	575	23.7	93.6	26.26
30	3600	286TS	170228.60	385	575	26.2	93.0	26.46
	1800	286T	170119.60	432	575	29.0	94.1	27.83
40	3600	324TS	170232.60	504	575	36.0	93.6	28.03
	1800	324TS	170120.60	528	575	38.1	94.1	29.53
50	1800	326T	170121.60	587	575	46.7	94.5	31.02
60	1800	364T	170239.60	666	575	54.4	95.4	32.64
75	1800	365T	170244.60	733	575	68.7	95.8	33.62
100	1800	405T	170253.60	1070	575	89.6	95.4	37.91

Other stock 575V motors are available from LEESON through our Canadian facility. Contact LEESON for availability.

- These motors are totally enclosed, non-ventilated, all others totally enclosed fan cooled.
- † Class F insulated.
- ♣ 1.0 Service Factor, Class F insulation.
- ~ Open fan cooled design.
- A Subject to Availability.

All 180 and 210 frame Rolled Steel motors have Class F Insulation.

575 VOLT • TEFC • C FACE LESS BASE

HP	SYN RPM 60 Hz	NEMA Frame	Catalog Number	App. Wgt. (lbs.)	Voltage	F.L. Amps 575 V.	% F.L. Eff.	"C" Dim. (Inches)
1/2	1800	56C	110176.00●†	20	575	0.8	79.0	9.94
3/4	1800	56C	110177.00	21	575	1.1	77.0	10.81
	1800	56C	110204.00	30	575	1.5	77.0	11.31
1	1800	143TC	G120176.00	32	575	1.2	82.5	12.25
	1800	56C	111444.00	33	575	2.0	78.5	11.81
1½	1800	145TC	G120177.00	31	575	1.8	84.0	12.75
	3600	56C	111611.00	34	575	2.2	82.5	12.31
2	1800	145TC	G120178.00	45	575	2.25	84.0	13.75
	3600	182TC	G131498.00	68	575	3.3	87.5	13.97
5	1800	184TC	G131499.00	76	575	5.2	87.5	14.97



200-208 VOLT/400-416 VOLT • THREE PHASE DRIP-PROOF • RIGID BASE

HP	SYN RPM 60 Hz	NEMA Frame	Catalog Number	App. Wgt. (lbs.)	Voltage	F.L. Amps 200 V.	% F.L. Eff.	"C" Dim. (Inches)
5	1800	184T	G131500.00	62	200-208/400-416	15.4	86.0	13.19
7½	1800	213T	G141124.00~	133	200-208/400-416	22.0	84.0	17.09
10	1800	215T	G140004.00	138	200-208/400-416	32.0	86.5	15.76

200-208 VOLT/400-416 VOLT • THREE PHASE TEFC • RIGID BASE

HP	SYN RPM 60 Hz	NEMA Frame	App. Catalog Number	Wgt. (lbs.)	F.L. Voltage	Amps 200 V.	% F.L. Eff.	"C" Dim. (Inches)
1	1800	56	110255.00	30	200-208	4.4	77.0	11.31
	1800	143T	G120047.00 A	32	200-208	4.4	77.0	12.75
1½	1800	145T	G120032.00 A	35	200-208	5.6	80.0	12.75
2	1800	145T	G120034.00†A	38	200-208	7.2	81.5	12.75
3	3600	182T	G131465.00	82	200-208/400-416	10.0	84.0	12.96
5	1800	184T	G131466.00	63	200-208/400-416	15.4	86.0	13.96
7½	1800	213T	G141123.00♣A	144	200-208/400-416	23.0	87.0	17.58
10	1800	215T	G140013.00	168	200-208/400-416	29.6	87.5	18.21

All 200-208 motors have a 1.15 Service Factor, Class F insulation

Catalog Numbers in Green are EPACT Motors.

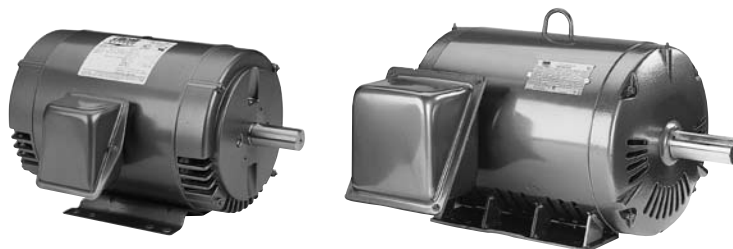
SHADED FRAME INDICATES CAST IRON CONSTRUCTION

All three phase motors, 1 HP and above, are inverter rated.

Specifications are subject to change without notice

Features:

- Meets energy efficiency requirements of the United States and Canada.
- Industry leading 1.25 service factor through 200 HP*
- Superior speed-torque curves – some models* are nameplated Design B & C - see “Notes” column.
- Continuous Duty
- Construction materials –
56-256T: steel frame / cast aluminum brackets
284T-449T: steel frame / cast iron brackets
- Premium Insulation Systems –
56 frames: Class B
143T-449T frames: Class F
- Y-delta start capability frames 284T-449T (reference “Y” in Model Number).
- Shielded ball bearing for direct coupled applications. Contact your local sales office for belted applications.



Applications:

For use where water and dust exposure is moderate. Ideally suited for use on pumps, compressors, blowers, fans and other standard industrial applications.

* P efficiency codes.

FOOT MOUNT

HP	SYN RPM	Frame	FL Nom Eff (%)	SF	Volts	Model Number	Product Number	Approx Shpg Wght (lbs)
1/3	1800	56	65.5	1.15	575	SRD4S0.33T65	LM25054	15
1/2	3600	56	66.0	1.25	575	SRD2S0.5T65	LM25055	22
	1800	56	70.0	1.25	575	SRD4S0.5T65	LM24161	17
3/4	3600	56	74.0	1.25	575	SRD2S0.75T65	LM25056	21
	1800	56	75.5	1.15	575	SRD4S0.75T65	LM25057	20
1	3600	56	74.0	1.25	575	SRD2S1T65	LM25058	24
	1800	56	77.0	1.15	575	SRD4S1T65	LM25059	22
	1800	143T	82.5	1.25	575	SSD4P1T65	LM24170	34
1 1/2	3600	56	80.0	1.15	575	SRD2S1.5T65	LM25060	23
	3600	143T	82.5	1.25	575	SSD2P1.5T65	LM25065	28
	1800	56H	80.0	1.15	575	SRD4S1.5T65	LM25061	28
	1800	145T	84.0	1.25	575	SSD4P1.5T65	LM25066	40
2	3600	56H	80.0	1.15	575	SRD2S2T65	LM25062	25
	3600	145T	84.0	1.25	575	SSD2P2T65	LM25067	28
	1800	56H	81.5	1.15	575	SRD4S2T65	LM25063	36
	1800	145T	84.0	1.25	575	SSD4P2T65	LM24124	44
3	3600	56H	84.0	1.15	575	SRD2S3T65	LM25064	33
	3600	145T	84.0	1.25	575	SSD2P3T65	LM25068	33
	1800	182T	86.5	1.25	575	SSD4P3T65	LM24227	83
5	3600	182T	86.5	1.25	575	SSD2P5T65	LM25069	88
	1800	184T	87.5	1.25	575	SSD4P5T65	LM25070	87
7 1/2	3600	184T	87.5	1.15	575	SSD2P7.5T65	LM25071	88
	1800	213T	88.5	1.25	575	SSD4P7.5T65	LM24229	121
10	3600	213T	88.5	1.25	575	SSD2P10T65	TBD	-
	1800	215T	89.5	1.25	575	SSD4P10T65	LM24231	138

Product numbers in red are STOCK items.

Specifications are subject to change without notice

FOOT MOUNT (cont'd)

HP	SYN RPM	Frame	FL Nom Eff (%)	SF	Volts	Model Number	Product Number	Approx Shpg Wght (lbs)
15	3600	215T	89.5	1.25	575	SSD2P15T65	TBD	-
	1800	254T	91.0	1.25	575	SSD4P15T65	LM24219	215
20	3600	254T	90.2	1.25	575	SSD2P20T65	TBD	245
	1800	256T	91.0	1.25	575	SSD4P20T65	LM24232	233
25	3600	256T	91.0	1.25	575	SSD2P25T65	TBD	-
	1800	284T	91.7	1.25	575	CCD4P25T65Y	LM29581	350
30	3600	284TS	91.0	1.25	575	SD2P30TS65Y	LM20081	348
	1800	286T	92.4	1.25	575	CCD4P30T65Y	LM29865	400
40	3600	286TS	91.7	1.25	575	SD2P40TS65Y	LM15599	389
	1800	324T	93.0	1.25	575	SD4P40T65Y	LM14402	469
50	3600	324TS	92.4	1.25	575	SD2P50TS65Y	LM14401	469
	1800	326T	93.0	1.25	575	SD4P50T65Y	LM14405	522
60	3600	326TS	93.0	1.25	575	SD2P60TS65Y	LM14404	522
	1800	364T	93.6	1.25	575	SD4P60T65Y	LM18378	712
75	3600	364TS	93.0	1.25	575	SD2P75TS65Y	LM18379	712
	1800	365T	94.1	1.25	575	SD4P75T65Y	LM18384	763
100	3600	365TS	93.0	1.25	575	SD2P100TS65Y	LM18385	763
	1800	404T	94.1	1.25	575	SD4P100T65Y	LM18298	882
125	3600	404TS	93.6	1.25	575	SD2P125TS65Y	LM18296	882
	1800	405T	95.4	1.25	575	SD4P125T65Y	LM18306	958
150	3600	405TS	93.6	1.25	575	SD2P150TS65Y	LM18302	958
	1800	444T	95.0	1.15	575	SD4P150T65Y	LM15101	1277
200	3600	444TS	94.5	1.25	575	SD2P200TS65Y	LM15100	1277
	1800	445T	95.0	1.15	575	SD4P200T65Y	LM15106	1449
250	3600	445TS	94.5	1.15	575	SD2P250TS65Y	LM15103	1438
	1800	445T	95.4	1.15	575	SD4P250T65Y	LM15104	1438
300	3600	447TS	95.0	1.15	575	SD2P300TS65Y	LM15111	1745
	1800	447T	95.4	1.15	575	SD4P300T65Y	LM15061	1745
350	3600	447TS	95.0	1.15	575	SD2P350TS65Y	LM15108	1745
	1800	447T	95.4	1.15	575	SD4P350T65Y	LM15109	1745
400	3600	449TS	95.4	1.15	575	SD2P400TS65Y	LM15116	2112
	1800	449T	95.4	1.15	575	SD4P400T65Y	LM15117	2112
450	3600	449TS	95.8	1.00	575	SD2P450TS65Y	TBD	TBD
	1800	449T	95.8	1.00	575	SD4P450T65Y	TBD	TBD

◆ Cast iron design contact Lincoln Motors.

Product numbers in red are STOCK items.

Specifications are subject to change without notice



ODP • 575 VOLT MOTORS

**3-PHASE
FOOT MOUNT & C-FACE
1/3 TO 450 HP**

C-FACE WITH FEET

HP	SYN RPM	Frame	FL Nom Eff (%)	SF	Volts	Model Number	Product Number	Approx Shpg Wght (lbs)
1/3	1800	56C	67.0	1.35	575	SRD4S0.33TC65	LM25072	15
1/2	3600	56C	66.0	1.25	575	SRD2S0.5TC65	LM25073	18
	1800	56C	68.0	1.15	575	SRD4S0.5TC65	LM25074	17
3/4	3600	56C	74.0	1.25	575	SRD2S0.75TC65	LM25075	21
	1800	56C	75.5	1.25	575	SRD4S0.75TC65	LM25076	20
1	3600	56C	74.0	1.25	575	SRD2S1TC65	LM25077	24
	1800	56C	77.0	1.15	575	SRD4S1TC65	LM25078	22
	1800	143TC	82.5	1.25	575	SSD4P1TC65	LM25084	34
1 1/2	3600	56C	80.0	1.15	575	SRD2S1.5TC65	LM25079	23
	1800	56HC	80.0	1.15	575	SRD4S1.5TC65	LM25080	28
	1800	145TC	84.0	1.25	575	SSD4P1.5TC65	LM25085	40
2	3600	56HC	80.0	1.15	575	SRD2S2TC65	LM25081	25
	1800	56C	81.5	1.15	575	SRD4S2TC65	LM25082	36
	1800	145TC	84.0	1.25	575	SSD4P2TC65	LM25086	44
3	3600	56HC	84.0	1.15	575	SRD2S3TC65	LM25083	33
	1800	182TC	86.5	1.25	575	SSD4P3TC65	LM25087	83
5	1800	184TC	87.5	1.25	575	SSD4P5TC65	LM25088	93
7 1/2	1800	213TC	88.5	1.25	575	SSD4P7.5TC65	LM25089	115
10	1800	215TC	89.5	1.25	575	SSD4P10TC65	LM25090	138
15	1800	254TC	91.0	1.25	575	SSD4P15TC65	LM25091	215
20	1800	256TC	91.0	1.25	575	SSD4P20TC65	LM25092	233
25	1800	284TC	91.7	1.25	575	CCD4P25TC65	LM30138	350
30	1800	286TC	92.4	1.25	575	CCD4P30TC65	LM30139	396
40	1800	324TC	93.0	1.25	575	SD4P40TC65Y	LM14556	479
50	1800	326TC	93.0	1.25	575	SD4P50TC65Y	LM14559	535
60	1800	364TC	93.6	1.25	575	SD4P60TC65Y	LM19713	724
75	1800	365TC	94.1	1.25	575	SD4P75TC65Y	LM19716	771
100	1800	404TC	94.1	1.25	575	SD4P100TC65Y	LM19719	898
125	1800	405TC	94.5	1.25	575	SD4P125TC65Y	LM19722	974
150	1800	444TC	95.0	1.15	575	SD4P150TC65Y	LM19725	1292
200	1800	445TC	95.0	1.25	575	SD4P200TC65Y	LM19728	1470
250	1800	445TC	95.4	1.15	575	SD4P250TC65Y	LM19731	1459
300	1800	447TC	95.4	1.15	575	SD4P300TC65Y	LM19734	1766

Product numbers in red are STOCK items.

Specifications are subject to change without notice

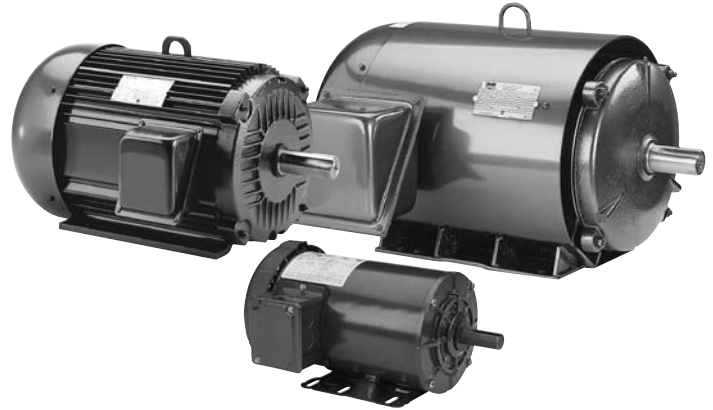
TEFC • 575 VOLT MOTORS

3-PHASE
FOOT MOUNT & C-FACE
1/3 TO 400 HP



Features:

- Industry leading 1.25 service factor* through 75 HP
- Superior speed-torque curves – most models* are nameplated Design B & C
- Two levels of premium efficiency* – P efficiency codes meet and B efficiency codes exceed the energy efficiency requirements of the United States and Canada.
- Continuous Duty
- Construction materials (reference first letters of Model Number):
AF, AAF – extruded aluminum frame and cast iron brackets
SF – steel frame / cast iron end brackets
SR, SS – steel frame / cast aluminum brackets
- Premium Insulation Systems –
56 frames: Class B
143T-449T frames: Class F
- Y-delta start capability 30 HP and larger
- Shielded ball bearing for direct coupled applications. Contact your local sales office for belted applications.



Applications:

For use where exposure to water, dust and corrosives exists. Ideally suited for use on pumps, compressors, fans, blowers, conveyors, machine tools and other industrial applications.

*P & B efficiency codes.

FOOT MOUNT

HP	SYN RPM	Frame	FL Nom Eff (%)	SF	Volts	Model Number	Product Number	Approx Shpg Wght (lbs)	
1/3	1800	56	71.0	1.15	575	SRF4S0.33T65	LM25093	16	
	1/2	3600	56	66.0	1.15	575	SRF2S0.5T65	LM25094	22
		1800	56	74.0	1.15	575	SRF4S0.5T65	LM24154	22
3/4	1200	56	68.0	1.15	575	SRF6S0.5T65	LM24295	24	
	3600	56	74.0	1.15	575	SRF2S0.75T65	LM24110	23	
	1800	56	75.5	1.15	575	SRF4S0.75T65	LM25095	30	
1	1200	56	74.0	1.15	575	SRF6S0.75T65	TBD	28	
	3600	56	74.0	1.15	575	SRF2S1T65	LM25096	24	
	1800	56	77.0	1.15	575	SRF4S1T65	LM25097	27	
	1800	143T	82.5	1.25	575	SSF4P1T65	LM24109	36	
1 1/2	1200	145T	80.0	1.25	575	SSF6P1T65	TBD	37	
	3600	56	80.0	1.15	575	SRF2S1.5T65	LM25098	25	
	3600	143T	82.5	1.25	575	SSF2P1.5T65	LM25102	34	
	1800	56H	80.0	1.15	575	SRF4S1.5T65	LM25099	30	
	1800	145T	84.0	1.15	575	SSF4P1.5T65	LM24142	48	
	1200	182T	86.5	1.25	575	AF6B1.5T65	LM17059	83	
	1200	182T	85.5	1.25	575	AF6P1.5T65	LM16379	83	

Product numbers in red are STOCK items.

Specifications are subject to change without notice



TEFC • 575 VOLT MOTORS

**3-PHASE
FOOT MOUNT & C-FACE
1/3 TO 400 HP**

FOOT MOUNT (cont'd)

HP	SYN RPM	Frame	FL Nom Eff (%)	SF	Volts	Model Number	Product Number	Approx Shpg Wght (lbs)
2	3600	56H	80.0	1.15	575	SRF2S2T65	LM25100	39
	3600	145T	84.0	1.25	575	SSF2P2T65	LM25103	39
	1800	56H	82.5	1.15	575	SRF4S2T65	LM25101	40
	1800	145T	84.0	1.25	575	SSF4P2T65	LM24108	45
	1200	184T	87.5	1.25	575	AF6B2T65	LM17062	92
	1200	184T	86.5	1.25	575	AF6P2T65	LM16382	102
3	3600	182T	87.5	1.25	575	AF2B3T65	LM17063	83
	3600	182T	85.5	1.25	575	AF2P3T65	LM16383	72
	1800	182T	89.5	1.25	575	AF4B3T65	LM17064	83
	1800	182T	87.5	1.25	575	AF4P3T65	LM16384	77
	1200	213T	89.5	1.25	575	AF6B3T65	LM17065	127
	1200	213T	87.5	1.25	575	AF6P3T65	LM16385	127
5	3600	184T	88.5	1.25	575	AF2B5T65	LM17066	92
	3600	184T	87.5	1.25	575	AF2P5T65	LM16386	174
	1800	184T	90.2	1.25	575	AF4B5T65	LM17067	87
	1800	184T	87.5	1.25	575	AF4P5T65	LM16387	92
	1200	215T	89.5	1.25	575	AF6B5T65	LM17068	138
	1200	215T	87.5	1.25	575	AF6P5T65	LM16388	155
	900	254T	85.5	1.15	575	AF8P5T65	LM33171	165
7 1/2	3600	213T	91.0	1.25	575	AF2B7.5T65	LM17069	127
	3600	213T	88.5	1.25	575	AF2P7.5T65	LM16389	143
	1800	213T	91.0	1.25	575	AF4B7.5T65	LM17070	127
	1800	213T	89.5	1.25	575	AF4P7.5T65	LM16391	160
	1200	254T	91.0	1.25	575	AF6B7.5T65	LM17071	209
	1200	254T	89.5	1.25	575	AF6P7.5T65	LM16392	209
10	3600	215T	91.0	1.25	575	AF2B10T65	LM17072	138
	3600	215T	89.5	1.25	575	AF2P10T65	LM16394	138
	1800	215T	91.0	1.25	575	AF4B10T65	LM17073	138
	1800	215T	89.5	1.25	575	AF4P10T65	LM16395	138
	1200	256T	91.0	1.25	575	AF6B10T65	LM17074	236
	1200	256T	89.5	1.25	575	AF6P10T65	LM16397	386
15	3600	254T	91.7	1.25	575	AF2B15T65	LM17075	209
	3600	254T	90.2	1.25	575	AF2P15T65	LM16398	209
	1800	254T	92.4	1.25	575	AF4B15T65	LM17076	209
	1800	254T	91.0	1.25	575	AF4P15T65	LM16400	240
	1200	284T	92.4	1.25	575	AF6B15T65	LM17077	363
	1200	284T	90.2	1.25	575	AF6P15T65	LM16401	369
20	3600	256T	91.7	1.25	575	AF2B20T65	LM17078	236
	3600	256T	90.2	1.25	575	AF2P20T65	LM16403	290
	1800	256T	93.0	1.25	575	AF4B20T65	LM17079	275
	1800	256T	91.0	1.25	575	AF4P20T65	LM15919	236
	1200	286T	93.0	1.25	575	AF6B20T65	LM17080	408
	1200	286T	90.2	1.25	575	AF6P20T65	LM16404	408
25	3600	284TS	93.0	1.25	575	AF2B25TS65	LM17081	363
	3600	284TS	91.7	1.25	575	AF2P25TS65	LM16406	410
	1800	284T	94.1	1.25	575	AF4B25T65	LM17082	363
	1800	284T	92.4	1.25	575	AF4P25T65	LM16407	320
	1200	324T	93.0	1.25	575	SF6B25T65Y	LM14409	504
	1200	324T	91.7	1.25	575	SF6P25T65Y	LM14397	504

Product numbers in red are STOCK items.

Specifications are subject to change without notice

FOOT MOUNT (cont'd)

HP	SYN RPM	Frame	FL Nom Eff (%)	SF	Volts	Model Number	Product Number	Approx Shpg Wght (lbs)
30	3600	286TS	93.6	1.25	575	AF2B30TS65Y	LM20085	485
	3600	286TS	91.0	1.25	575	AF2P30TS65Y	LM19594	408
	1800	286T	94.5	1.25	575	AF4B30T65Y	LM20086	408
	1800	286T	92.4	1.25	575	AF4P30T65Y	LM19595	585
	1200	326T	92.4	1.25	575	SF6B30T65Y	LM14412	558
	1200	326T	91.7	1.25	575	SF6P30T65Y	LM14400	570
40	3600	324TS	94.1	1.25	575	SF2B40TS65Y	LM14407	504
	3600	324TS	91.7	1.25	575	SF2P40TS65Y	LM14395	504
	1800	324T	94.1	1.25	575	SF4B40T65Y	LM14408	504
	1800	324T	93.0	1.15	575	SF4P40T65Y	LM14396	504
	1200	364T	94.5	1.25	575	SF6B40T65Y	LM18368	765
	1200	364T	93.0	1.15	575	SF6P40T65Y	LM18365	765
50	3600	326TS	94.1	1.25	575	SF2B50TS65Y	LM14410	558
	3600	326TS	92.4	1.25	575	SF2P50TS65Y	LM14398	558
	1800	326T	95.0	1.25	575	SF4B50T65Y	LM14411	558
	1800	326T	93.0	1.25	575	SF4P50T65Y	LM14399	558
	1200	365T	94.5	1.25	575	SF6B50T65Y	LM18374	822
	1200	365T	93.0	1.25	575	SF6P50T65Y	LM18371	822
60	3600	364TS	95.0	1.25	575	SF2B60TS65Y	LM18370	765
	3600	364TS	93.0	1.25	575	SF2P60TS65Y	LM18367	765
	1800	364T	95.0	1.25	575	SF4B60T65Y	LM18369	765
	1800	364T	93.6	1.25	575	SF4P60T65Y	LM18366	765
	1200	404T	94.5	1.15	575	SF6B60T65Y	LM18289	918
	1200	404T	93.6	1.15	575	SF6P60T65Y	LM18288	918
75	3600	365TS	95.0	1.25	575	SF2B75TS65Y	LM18376	822
	3600	365TS	93.0	1.25	575	SF2P75TS65Y	LM18373	822
	1800	365T	95.0	1.15	575	SF4B75T65Y	LM18375	822
	1800	365T	94.1	1.25	575	SF4P75T65Y	LM18372	822
	1200	405T	94.5	1.15	575	SF6B75T65Y	LM18293	1002
	1200	405T	93.6	1.15	575	SF6P75T65Y	LM18294	1002
100	3600	405TS	95.8	1.15	575	SF2B100TS65Y	LM18291	1002
	3600	405TS	94.1	1.15	575	SF2P100TS65Y	LM18290	1002
	1800	405T	95.4	1.15	575	SF4B100T65Y	LM18307	1002
	1800	405T	94.5	1.15	575	SF4P100T65Y	LM18292	1002
	1200	444T	95.4	1.15	575	SF6B100T65Y	LM15121	1351
	1200	444T	94.1	1.15	575	SF6P100T65Y	LM15080	1351
125	3600	444TS	95.8	1.15	575	SF2B125TS65Y	LM15119	1351
	3600	444TS	94.5	1.15	575	SF2P125TS65Y	LM15078	1351
	1800	444T	96.2	1.15	575	SF4B125T65Y	LM15120	1351
	1800	444T	94.5	1.15	575	SF4P125T65Y	LM15079	1351
	1200	445T	95.8	1.15	575	SF6B125T65Y	LM15127	1531
	1200	445T	94.1	1.15	575	SF6P125T65Y	LM15086	1504
150	3600	445TS	96.2	1.15	575	SF2B150TS65Y	LM15125	1531
	3600	445TS	94.5	1.15	575	SF2P150TS65Y	LM15084	1504
	1800	445T	96.2	1.15	575	SF4B150T65Y	LM15126	1531
	1800	445T	95.0	1.15	575	SF4P150T65Y	LM15085	1531
	1200	445T	95.8	1.15	575	SF6B150T65Y	LM15124	1531
	1200	445T	95.0	1.15	575	SF6P150T65Y	LM15083	1504
200	3600	445TS	96.2	1.15	575	SF2B200TS65Y	LM15122	1531
	3600	445TS	95.0	1.15	575	SF2P200TS65Y	LM15081	1504
	1800	445T	96.2	1.15	575	SF4B200T65Y	LM15123	1531
	1800	445T	95.0	1.15	575	SF4P200T65Y	LM15082	1531
	1200	447T	95.8	1.15	575	SF6B200T65Y	LM15131	1812
	1200	447T	95.0	1.15	575	SF6P200T65Y	LM15091	1812

Product numbers in red are STOCK items.

Specifications are subject to change without notice

FOOT MOUNT (cont'd)

HP	SYN RPM	Frame	FL Nom Eff (%)	SF	Volts	Model Number	Product Number	Approx Shpg Wght (lbs)
250	3600	447TS	96.2	1.15	575	SF2B250TS65Y	LM15128	1812
	3600	447TS	95.4	1.00	575	SF2P250TS65Y	LM15087	1812
	1800	447T	96.2	1.15	575	SF4B250T65Y	LM15130	1812
	1800	447T	95.0	1.15	575	SF4P250T65Y	LM15092	1812
	1200	449T	95.4	1.00	575	SF6B250T65Y	LM15137	2185
	1200	449T	95.0	1.15	575	SF6P250T65Y	LM15099	2185
300	3600	449TS	96.2	1.15	575	S449F2B300TS65Y	LM15138	2185
	3600	449TS	95.4	1.15	575	S449F2P300TS65Y	LM15098	2185
	1800	447T	96.2	1.15	575	SF4B300T65Y	LM15129	1812
	1800	447T	95.4	1.00	575	SF4P300T65Y	LM15089	1812
350	3600	449TS	95.8	1.15	575	SF2B350TS65Y	LM15135	2185
	3600	449TS	95.4	1.00	575	SF2P350TS65Y	LM15096	2185
	1800	449T	96.2	1.15	575	SF4B350T65Y	LM15136	2185
	1800	449T	95.4	1.15	575	SF4P350T65Y	LM15097	2185
400	3600	449TS	95.8	1.00	575	SF2B400TS65Y	LM15132	2185
	3600	449TS	95.4	1.00	575	SF2P400TS65Y	LM15093	2185
	1800	449T	96.2	1.15	575	SF4B400T65Y	LM15133	2185
	1800	449T	95.4	1.00	575	SF4P400T65Y	LM15094	2185

C-FACE WITH FEET

HP	SYN RPM	Frame	FL Nom Eff (%)	SF	Volts	Model Number	Product Number	Approx Shpg Wght (lbs)
1/3	1800	56C	65.5	1.15	575	SRF4S0.33TC65	LM25042	21
1/2	3600	56C	66.5	1.15	575	SRF2S0.5TC65	LM25043	22
	1800	56C	70.0	1.15	575	SRF4S0.5TC65	LM24355	18
3/4	3600	56C	74.0	1.15	575	SRF2S0.75TC65	LM25044	24
	1800	56C	75.5	1.15	575	SRF4S0.75TC65	LM24354	21
1	3600	56C	74.0	1.15	575	SRF2S1TC65	LM25045	25
	1800	56C	77.0	1.15	575	SRF4S1TC65	LM25046	26
	1800	143TC	82.5	1.25	575	SSF4P1TC65	LM25051	41
1 1/2	3600	143TC	82.5	1.25	575	SSF2P1.5TC65	LM25052	41
	3600	56C	80.0	1.15	575	SRF2S1.5TC65	LM25047	41
	1800	56HC	80.0	1.15	575	SRF4S1.5TC65	LM25048	31
	1800	145TC	84.0	1.15	575	SSF4P1.5TC65	LM24158	49
	1200	182TC	86.5	1.25	575	AF6B1.5TC65	LM17175	95
1200	182TC	85.5	1.25	575	AF6P1.5TC65	LM16582	95	
2	3600	56HC	80.0	1.15	575	SRF2S2TC65	LM25049	31
	3600	145TC	84.0	1.25	575	SSF2P2TC65	LM25053	40
	1800	56HC	82.5	1.15	575	SRF4S2TC65	LM25050	50
	1800	145TC	84.0	1.15	575	SSF4P2TC65	LM24137	47
	1200	184TC	87.5	1.25	575	AF6B2TC65	LM17179	104
	1200	184TC	86.5	1.25	575	AF6P2TC65	LM16587	104
3	3600	182TC	87.5	1.25	575	AF2B3TC65	LM17180	95
	3600	182TC	85.5	1.25	575	AF2P3TC65	LM16589	95
	1800	182TC	89.5	1.25	575	AF4B3TC65	LM17181	95
	1800	182TC	87.5	1.25	575	AF4P3TC65	LM16590	95
	1200	213TC	89.5	1.25	575	AF6B3TC65	LM17182	138
	1200	213TC	87.5	1.25	575	AF6P3TC65	LM16591	138B

Product numbers in red are STOCK items.

Specifications are subject to change without notice

TEFC • 575 VOLT MOTORS

3-PHASE
FOOT MOUNT & C-FACE
1/3 TO 400 HP



AC MOTORS

C-FACE WITH FEET (cont'd)

HP	SYN RPM	Frame	FL Nom Eff (%)	SF	Volts	Model Number	Product Number	Approx Shpg Wght (lbs)
5	3600	184TC	88.5	1.25	575	AF2B5TC65	LM17183	104
	3600	184TC	87.5	1.25	575	AF2P5TC65	LM16592	104
	1800	184TC	89.5	1.25	575	AF4B5TC65	LM17184	104
	1800	184TC	87.5	1.25	575	AF4P5TC65	LM16593	104
	1200	215TC	89.5	1.25	575	AF6B5TC65	LM17185	149
	1200	215TC	87.5	1.25	575	AF6P5TC65	LM16594	149
7 1/2	3600	213TC	91.0	1.25	575	AF2B7.5TC65	LM17186	138
	3600	213TC	88.5	1.25	575	AF2P7.5TC65	LM16595	175
	1800	213TC	91.0	1.25	575	AF4B7.5TC65	LM17187	138
	1800	213TC	89.5	1.25	575	AF4P7.5TC65	LM16596	127
	1200	254TC	91.0	1.25	575	AF6B7.5TC65	LM17188	221
	1200	254TC	89.5	1.25	575	AF6P7.5TC65	LM16597	221
10	3600	215TC	91.0	1.25	575	AF2B10TC65	LM17189	149
	3600	215TC	89.5	1.25	575	AF2P10TC65	LM16598	210
	1800	215TC	91.0	1.25	575	AF4B10TC65	LM17190	149
	1800	215TC	89.5	1.25	575	AF4P10TC65	LM16599	200
	1200	256TC	91.0	1.25	575	AF6B10TC65	LM17191	248
	1200	256TC	89.5	1.25	575	AF6P10TC65	LM16600	200
15	3600	254TC	91.7	1.25	575	AF2B15TC65	LM17192	221
	3600	254TC	90.2	1.25	575	AF2P15TC65	LM16601	185
	1800	254TC	92.4	1.25	575	AF4B15TC65	LM17193	221
	1800	254TC	91.0	1.25	575	AF4P15TC65	LM16602	260
	1200	284TC	92.4	1.25	575	AF6B15TC65	LM17194	370
	1200	284TC	90.2	1.25	575	AF6P15TC65	LM16603	500
20	3600	256TC	91.7	1.25	575	AF2B20TC65	LM17195	248
	3600	256TC	90.2	1.25	575	AF2P20TC65	LM16604	248
	1800	256TC	93.0	1.25	575	AF4B20TC65	LM17196	248
	1800	256TC	91.0	1.25	575	AF4P20TC65	LM16605	300
	1200	286TC	93.0	1.25	575	AF6B20TC65	LM17197	415
	1200	286TC	90.2	1.25	575	AF6P20TC65	LM16606	415
25	3600	284TSC	93.0	1.25	575	AF2B25TSC65	LM17198	370
	3600	284TSC	91.0	1.25	575	AF2P25TSC65	LM16607	370
	1800	284TC	94.1	1.25	575	AF4B25TC65	LM17199	370
	1800	284TC	92.4	1.25	575	AF4P25TC65	LM16608	370
	1200	324TC	93.0	1.25	575	SF6B25TC65Y	LM14563	514
	1200	324TC	91.7	1.25	575	SF6P25TC65Y	LM14551	500
30	3600	286TSC	93.0	1.25	575	AF2B30TSC65Y	LM20087	415
	3600	286TSC	91.0	1.25	575	AF2P30TSC65Y	LM19596	415
	1800	286TC	94.5	1.25	575	AF4B30TC65Y	LM20088	415
	1800	286TC	92.4	1.25	575	AF4P30TC65Y	LM19597	415
	1200	326TC	92.4	1.25	575	SF6B30TC65Y	LM14566	568
	1200	326TC	91.7	1.25	575	SF6P30TC65Y	LM14554	580
40	3600	324TSC	94.1	1.25	575	SF2B40TSC65Y	LM14561	514
	3600	324TSC	91.7	1.25	575	SF2P40TSC65Y	LM14549	514
	1800	324TC	94.1	1.25	575	SF4B40TC65Y	LM14562	514
	1800	324TC	93.0	1.25	575	SF4P40TC65Y	LM14550	518
	1200	364TC	94.5	1.25	575	SF6B40TC65Y	LM20035	777
	1200	364TC	93.0	1.15	575	SF6P40TC65Y	LM19598	777
50	3600	326TSC	94.1	1.25	575	SF2B50TSC65Y	LM14564	568
	3600	326TSC	92.4	1.25	575	SF2P50TSC65Y	LM14552	568
	1800	326TC	95.0	1.25	575	SF4B50TC65Y	LM14565	568
	1800	326TC	93.0	1.25	575	SF4P50TC65Y	LM14553	568
	1200	365TC	94.5	1.25	575	SF6B50TC65Y	LM20036	834
	1200	365TC	93.0	1.25	575	SF6P50TC65Y	LM19599	834

Product numbers in red are STOCK items.

Specifications are subject to change without notice



TEFC • 575 VOLT MOTORS

**3-PHASE
FOOT MOUNT & C-FACE
1/3 TO 400 HP**

C-FACE WITH FEET (cont'd)

HP	SYN RPM	Frame	FL Nom Eff (%)	SF	Volts	Model Number	Product Number	Approx Shpg Wght (lbs)
60	3600	364TSC	95.0	1.25	575	SF2B60TSC65Y	LM20037	777
	3600	364TSC	93.0	1.25	575	SF2P60TSC65Y	LM19600	777
	1800	364TC	95.0	1.25	575	SF4B60TC65Y	LM20038	778
	1800	364TC	93.6	1.25	575	SF4P60TC65Y	LM19603	778
	1200	404TC	94.5	1.15	575	SF6B60TC65Y	LM20039	934
	1200	404TC	93.6	1.15	575	SF6P60TC65Y	LM19601	934
75	3600	365TSC	95.0	1.25	575	SF2B75TSC65Y	LM20040	834
	3600	365TSC	93.0	1.25	575	SF2P75TSC65Y	LM19602	834
	1800	365TC	95.0	1.15	575	SF4B75TC65Y	LM20041	834
	1800	365TC	94.1	1.25	575	SF4P75TC65Y	LM15921	835
	1200	405TC	94.5	1.15	575	SF6B75TC65Y	LM20042	1018
	1200	405TC	93.6	1.15	575	SF6P75TC65Y	LM19604	1018
100	3600	405TSC	95.8	1.15	575	SF2B100TSC65Y	LM20043	1018
	3600	405TSC	93.6	1.15	575	SF2P100TSC65Y	LM19605	1018
	1800	405TC	95.4	1.15	575	SF4B100TC65Y	LM20044	1001
	1800	405TC	94.5	1.15	575	SF4P100TC65Y	LM19606	1018
	1200	444TC	95.4	1.15	575	SF6B100TC65Y	LM20045	1372
	1200	444TC	94.1	1.15	575	SF6P100TC65Y	LM19607	1372
125	3600	444TSC	95.8	1.15	575	SF2B125TSC65Y	LM20046	1372
	3600	444TSC	94.5	1.15	575	SF2P125TSC65Y	LM19608	1372
	1800	444TC	96.2	1.15	575	SF4B125TC65Y	LM20047	1372
	1800	444TC	94.5	1.15	575	SF4P125TC65Y	LM19609	1372
	1200	445TC	95.8	1.15	575	SF6B125TC65Y	LM20048	1552
	1200	445TC	94.1	1.15	575	SF6P125TC65Y	LM19610	1525
150	3600	445TSC	96.2	1.15	575	SF2B150TSC65Y	LM20049	1552
	3600	445TSC	94.5	1.15	575	SF2P150TSC65Y	LM19611	1525
	1800	445TC	96.2	1.15	575	SF4B150TC65Y	LM20050	1552
	1800	445TC	95.0	1.15	575	SF4P150TC65Y	LM19612	1525
	1200	445TC	95.8	1.15	575	SF6B150TC65Y	LM20051	1552
	1200	445TC	95.0	1.15	575	SF6P150TC65Y	LM19613	1525
200	3600	445TSC	96.2	1.15	575	SF2B200TSC65Y	LM20052	1552
	3600	445TSC	95.0	1.15	575	SF2P200TSC65Y	LM19614	1525
	1800	445TC	96.2	1.15	575	SF4B200TC65Y	LM20053	1552
	1800	445TC	95.0	1.15	575	SF4P200TC65Y	LM17685	1537
	1200	447TC	95.8	1.15	575	SF6B200TC65Y	LM20054	1833
	1200	447TC	95.0	1.15	575	SF6P200TC65Y	LM19615	1833
250	3600	447TSC	96.2	1.15	575	SF2B250TSC65Y	LM20055	1833
	3600	447TSC	95.4	1.00	575	SF2P250TSC65Y	LM19616	1833
	1800	447TC	96.2	1.15	575	SF4B250TC65Y	LM20056	1833
	1800	447TC	95.0	1.15	575	SF4P250TC65Y	LM19617	1833
300	3600	449TSC	96.2	1.15	575	S449F2B300TSC65Y	LM20058	2206
	3600	449TSC	95.4	1.15	575	S449F2P300TSC65Y	LM19619	2206
	1800	447TC	96.2	1.15	575	SF4B300TC65Y	LM20059	1833
	1800	447TC	95.4	1.00	575	SF4P300TC65Y	LM19620	1833
350	3600	449TSC	95.8	1.15	575	SF2B350TSC65Y	LM20061	2206
	3600	449TSC	95.4	1.00	575	SF2P350TSC65Y	LM19623	2206
	1800	449TC	96.2	1.15	575	SF4B350TC65Y	LM20062	2206
	1800	449TC	95.4	1.15	575	SF4P350TC65Y	LM19624	2206
400	3600	449TSC	95.8	1.00	575	SF2B400TSC65Y	LM20063	2206
	3600	449TSC	95.4	1.00	575	SF2P400TSC65Y	LM19625	2206
	1800	449TC	96.2	1.15	575	SF4B400TC65Y	LM20064	2206
	1800	449TC	95.4	1.00	575	SF4P400TC65Y	LM19626	2206

Product numbers in red are STOCK items.

Specifications are subject to change without notice