

ODP • 575 VOLT MOTORS

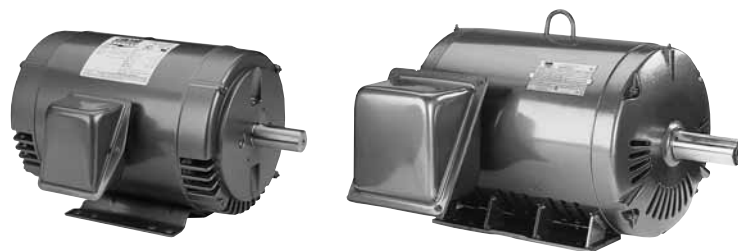
**3-PHASE
FOOT MOUNT & C-FACE
1/3 TO 450 HP**



Features:

- Meets energy efficiency requirements of the United States and Canada.
- Industry leading 1.25 service factor through 200 HP*
- Superior speed-torque curves – some models* are nameplated Design B & C - see "Notes" column.
- Continuous Duty
- Construction materials –
56-256T: steel frame / cast aluminum brackets
284T-449T: steel frame / cast iron brackets
- Premium Insulation Systems –
56 frames: Class B
143T-449T frames: Class F
- Y-delta start capability frames 284T-449T (reference "Y" in Model Number).
- Warranty
(sine-wave power & inverter power) –
48 & 56 frames: 18 months from date of manufacture and 12 months from date of installation which ever period expires first.
143T-256T frames: 30 months from date of manufacture and 24 months from date of installation which ever period expires first.
(sine-wave power) –
284T-449T frames: 42 months from date of manufacture and 36 months from date of installation which ever period expires first.
- Shielded ball bearing for direct coupled applications. Contact your local sales office for belted applications.
- Made in the U.S.A.

* P efficiency codes.



Applications:

For use where water and dust exposure is moderate. Ideally suited for use on pumps, compressors, blowers, fans and other standard industrial applications.

FOOT MOUNT

HP	SYN RPM	Frame	FL Nom Eff (%)	SF	Volts	Model Number	Product Number	Notes (see page 306)	Approx Shpg Wght (lbs)	List Price	Mult Sym
1/3	1800	56	65.5	1.15	575	SRD4S0.33T65	LM25054		15	\$276	LT-1A
1/2	3600	56	66.0	1.25	575	SRD2S0.5T65	LM25055		22	278	LT-1A
	1800	56	70.0	1.25	575	SRD4S0.5T65	LM24161		17	318	LT-1A
3/4	3600	56	74.0	1.25	575	SRD2S0.75T65	LM25056		21	326	LT-1A
	1800	56	75.5	1.15	575	SRD4S0.75T65	LM25057		20	353	LT-1A
1	3600	56	74.0	1.25	575	SRD2S1T65	LM25058		24	378	LT-1A
	1800	56	77.0	1.15	575	SRD4S1T65	LM25059		22	367	LT-1A
	1800	143T	82.5	1.25	575	SSD4P1T65	LM24170		34	382	LT-1B
1 1/2	3600	56	80.0	1.15	575	SRD2S1.5T65	LM25060		23	423	LT-1A
	3600	143T	82.5	1.25	575	SSD2P1.5T65	LM25065		28	456	LT-1B
	1800	56H	80.0	1.15	575	SRD4S1.5T65	LM25061		28	389	LT-1A
	1800	145T	84.0	1.25	575	SSD4P1.5T65	LM25066		40	404	LT-1B
2	3600	56H	80.0	1.15	575	SRD2S2T65	LM25062		25	495	LT-1A
	3600	145T	84.0	1.25	575	SSD2P2T65	LM25067		28	537	LT-1B
	1800	56H	81.5	1.15	575	SRD4S2T65	LM25063		36	480	LT-1A
	1800	145T	84.0	1.25	575	SSD4P2T65	LM24124		44	460	LT-1B
3	3600	56H	84.0	1.15	575	SRD2S3T65	LM25064		33	472	LT-1A
	3600	145T	84.0	1.25	575	SSD2P3T65	LM25068		33	493	LT-1B
	1800	182T	86.5	1.25	575	SSD4P3T65	LM24227		83	475	LT-1B
5	3600	182T	86.5	1.25	575	SSD2P5T65	LM25069		88	553	LT-1B
	1800	184T	87.5	1.25	575	SSD4P5T65	LM25070		87	529	LT-1B
7 1/2	3600	184T	87.5	1.15	575	SSD2P7.5T65	LM25071		88	762	LT-1B
	1800	213T	88.5	1.25	575	SSD4P7.5T65	LM24229		121	747	LT-1B
10	3600	213T	88.5	1.25	575	SSD2P10T65	TBD		-	955	LT-1B
	1800	215T	89.5	1.25	575	SSD4P10T65	LM24231	A	138	917	LT-1B

Prices and data subject to change without notice.

Product numbers in red are STOCK items.



ODP • 575 VOLT MOTORS

**3-PHASE
FOOT MOUNT & C-FACE
1/3 TO 450 HP**

FOOT MOUNT (cont'd)

HP	SYN RPM	Frame	FL Nom Eff (%)	SF	Volts	Model Number	Product Number	Notes (see page 306)	Approx Shpg Wght (lbs)	List Price	Mult Sym
15	3600	215T	89.5	1.25	575	SSD2P15T65	TBD		-	\$1277	LT-1B
	1800	254T	91.0	1.25	575	SSD4P15T65	LM24219		215	1327	LT-1B
20	3600	254T	90.2	1.25	575	SSD2P20T65	TBD		245	1607	LT-1B
	1800	256T	91.0	1.25	575	SSD4P20T65	LM24232	A	233	1667	LT-1B
25	3600	256T	91.0	1.25	575	SSD2P25T65	TBD		-	1957	LT-1B
	1800	284T	91.7	1.25	575	CCD4P25T65Y	LM29581		350	2261	LT-1C
30	3600	284TS	91.0	1.25	575	SD2P30TS65Y	LM20081		348	2623	LT-1C
	1800	286T	92.4	1.25	575	CCD4P30T65Y	LM29865		400	2623	LT-1C
40	3600	286TS	91.7	1.25	575	SD2P40TS65Y	LM15599		389	3389	LT-1C
	1800	324T	93.0	1.25	575	SD4P40T65Y	LM14402	C	469	3395	LT-1C
50	3600	324TS	92.4	1.25	575	SD2P50TS65Y	LM14401		469	4621	LT-1C
	1800	326T	93.0	1.25	575	SD4P50T65Y	LM14405	C	522	3834	LT-1C
60	3600	326TS	93.0	1.25	575	SD2P60TS65Y	LM14404		522	4805	LT-1C
	1800	364T	93.6	1.25	575	SD4P60T65Y	LM18378		712	4858	LT-1C
75	3600	364TS	93.0	1.25	575	SD2P75TS65Y	LM18379		712	6053	LT-1C
	1800	365T	94.1	1.25	575	SD4P75T65Y	LM18384		763	5142	LT-1C
100	3600	365TS	93.0	1.25	575	SD2P100TS65Y	LM18385		763	7465	LT-1C
	1800	404T	94.1	1.25	575	SD4P100T65Y	LM18298		882	6503	LT-1D
125	3600	404TS	93.6	1.25	575	SD2P125TS65Y	LM18296		882	9066	LT-1D
	1800	405T	95.4	1.25	575	SD4P125T65Y	LM18306		958	7488	LT-1D
150	3600	405TS	93.6	1.25	575	SD2P150TS65Y	LM18302		958	10841	LT-1D
	1800	444T	95.0	1.15	575	SD4P150T65Y	LM15101	C	1277	10079	LT-1D
200	3600	444TS	94.5	1.25	575	SD2P200TS65Y	LM15100		1277	13302	LT-1D
	1800	445T	95.0	1.15	575	SD4P200T65Y	LM15106	C	1449	11801	LT-1D
250	3600	445TS	94.5	1.15	575	SD2P250TS65Y	LM15103		1438	17740	LT-1D
	1800	445T	95.4	1.15	575	SD4P250T65Y	LM15104		1438	16362	LT-1D
300	3600	447TS	95.0	1.15	575	SD2P300TS65Y	LM15111		1745	20694	LT-1D
	1800	447T	95.4	1.15	575	SD4P300T65Y	LM15061		1745	17274	LT-1D
350	3600	447TS	95.0	1.15	575	SD2P350TS65Y	LM15108		1745	22764	LT-1D
	1800	447T	95.4	1.15	575	SD4P350T65Y	LM15109		1745	19878	LT-1D
400	3600	449TS	95.4	1.15	575	SD2P400TS65Y	LM15116		2112	25748	LT-1D
	1800	449T	95.4	1.15	575	SD4P400T65Y	LM15117		2112	24834	LT-1D
450	3600	449TS	95.8	1.00	575	SD2P450TS65Y	TBD		TBD	TBD	TBD
	1800	449T	95.8	1.00	575	SD4P450T65Y	TBD		TBD	TBD	TBD

♦ Cast iron design contact Lincoln Motors.
Prices and data subject to change without notice.

Product numbers in red are STOCK items.

ODP • 575 VOLT MOTORS

3-PHASE
FOOT MOUNT & C-FACE
1/3 TO 450 HP



C-FACE WITH FEET

HP	SYN RPM	Frame	FL Nom Eff (%)	SF	Volts	Model Number	Product Number	Notes (see page 306)	Approx Shpg Wght (lbs)	List Price	Mult Sym
1/3	1800	56C	67.0	1.35	575	SRD4S0.33TC65	LM25072		15	\$316	LT-1A
1/2	3600	56C	66.0	1.25	575	SRD2S0.5TC65	LM25073		18	318	LT-1A
	1800	56C	68.0	1.15	575	SRD4S0.5TC65	LM25074		17	358	LT-1A
3/4	3600	56C	74.0	1.25	575	SRD2S0.75TC65	LM25075		21	368	LT-1A
	1800	56C	75.5	1.25	575	SRD4S0.75TC65	LM25076		20	395	LT-1A
1	3600	56C	74.0	1.25	575	SRD2S1TC65	LM25077		24	420	LT-1A
	1800	56C	77.0	1.15	575	SRD4S1TC65	LM25078		22	407	LT-1A
	1800	143TC	82.5	1.25	575	SSD4P1TC65	LM25084		34	454	LT-1B
1 1/2	3600	56C	80.0	1.15	575	SRD2S1.5TC65	LM25079		23	464	LT-1A
	1800	56HC	80.0	1.15	575	SRD4S1.5TC65	LM25080		28	429	LT-1A
	1800	145TC	84.0	1.25	575	SSD4P1.5TC65	LM25085		40	477	LT-1B
2	3600	56HC	80.0	1.15	575	SRD2S2TC65	LM25081		25	512	LT-1A
	1800	56C	81.5	1.15	575	SRD4S2TC65	LM25082		36	510	LT-1A
	1800	145TC	84.0	1.25	575	SSD4P2TC65	LM25086		44	510	LT-1B
3	3600	56HC	84.0	1.15	575	SRD2S3TC65	LM25083		33	512	LT-1A
	1800	182TC	86.5	1.25	575	SSD4P3TC65	LM25087		83	598	LT-1B
5	1800	184TC	87.5	1.25	575	SSD4P5TC65	LM25088		93	682	LT-1B
7 1/2	1800	213TC	88.5	1.25	575	SSD4P7.5TC65	LM25089		115	879	LT-1B
10	1800	215TC	89.5	1.25	575	SSD4P10TC65	LM25090	A	138	1082	LT-1B
15	1800	254TC	91.0	1.25	575	SSD4P15TC65	LM25091		215	1421	LT-1B
20	1800	256TC	91.0	1.25	575	SSD4P20TC65	LM25092	A	233	1762	LT-1B
25	1800	284TC	91.7	1.25	575	CCD4P25TC65	LM30138		350	2430	LT-1C
30	1800	286TC	92.4	1.25	575	CCD4P30TC65	LM30139		396	2794	LT-1C
40	1800	324TC	93.0	1.25	575	SD4P40TC65Y	LM14556	C	479	3676	LT-1C
50	1800	326TC	93.0	1.25	575	SD4P50TC65Y	LM14559	C	535	4118	LT-1C
60	1800	364TC	93.6	1.25	575	SD4P60TC65Y	LM19713		724	5198	LT-1C
75	1800	365TC	94.1	1.25	575	SD4P75TC65Y	LM19716		771	5607	LT-1C
100	1800	404TC	94.1	1.25	575	SD4P100TC65Y	LM19719		898	7046	LT-1D
125	1800	405TC	94.5	1.25	575	SD4P125TC65Y	LM19722	C	974	8032	LT-1D
150	1800	444TC	95.0	1.15	575	SD4P150TC65Y	LM19725	C	1292	10751	LT-1D
200	1800	445TC	95.0	1.25	575	SD4P200TC65Y	LM19728	C	1470	12459	LT-1D
250	1800	445TC	95.4	1.15	575	SD4P250TC65Y	LM19731		1459	17013	LT-1D
300	1800	447TC	95.4	1.15	575	SD4P300TC65Y	LM19734		1766	17988	LT-1D

Prices and data subject to change without notice.

Product numbers in red are STOCK items.

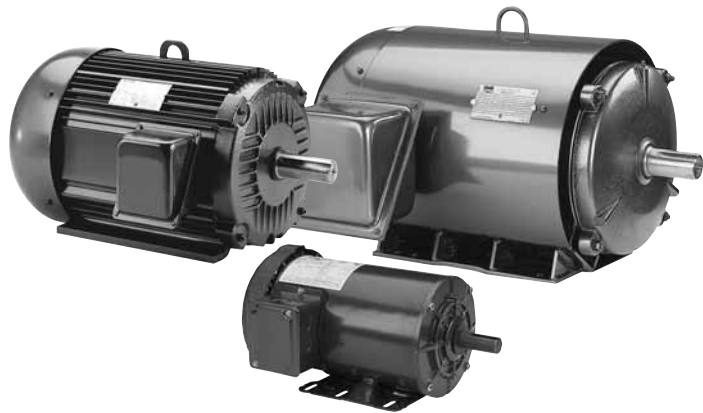


TEFC • 575 VOLT MOTORS

**3-PHASE
FOOT MOUNT & C-FACE
1/3 TO 400 HP**

Features:

- Industry leading 1.25 service factor* through 75 HP
- Superior speed-torque curves – most models* are nameplated Design B & C - see "Notes" column.
- Two levels of premium efficiency* – P efficiency codes meet and B efficiency codes exceed the energy efficiency requirements of the United States and Canada.
- Continuous Duty
- Construction materials (reference first letters of Model Number):
AF, AAF – extruded aluminum frame and cast iron brackets
SF – steel frame / cast iron end brackets
SR, SS – steel frame / cast aluminum brackets
- Premium Insulation Systems –
56 frames: Class B
143T-449T frames: Class F
- Y-delta start capability 30 HP and larger
- Warranty (sine-wave power & inverter power) –
48 & 56 frames: 18 months from date of manufacture and 12 months from date of installation which ever period expires first.
143T-256T frames: 30 months from date of manufacture and 24 months from date of installation which ever period expires first.
(sine-wave power) –
284T-449T frames: 42 months from date of manufacture and 36 months from date of installation which ever period expires first.
- Shielded ball bearing for direct coupled applications. Contact your local sales office for belted applications.
- Made in the U.S.A.



Applications:

For use where exposure to water, dust and corrosives exists. Ideally suited for use on pumps, compressors, fans, blowers, conveyors, machine tools and other industrial applications.



Cast Iron Frame Motors start on pages 207-217 and 252-255.

*P & B efficiency codes.

FOOT MOUNT

HP	SYN RPM	Frame	FL Nom Eff (%)	SF	Volts	Model Number	Product Number	Notes (see page 306)	Approx Shpg Wght (lbs)	List Price	Mult Sym
1/3	1800	56	71.0	1.15	575	SRF4S0.33T65	LM25093		16	\$317	LT-1A
1/2	3600	56	66.0	1.15	575	SRF2S0.5T65	LM25094		22	323	LT-1A
	1800	56	74.0	1.15	575	SRF4S0.5T65	LM24154		22	362	LT-1A
	1200	56	68.0	1.15	575	SRF6S0.5T65	LM24295		24	524	LT-1A
3/4	3600	56	74.0	1.15	575	SRF2S0.75T65	LM24110		23	357	LT-1A
	1800	56	75.5	1.15	575	SRF4S0.75T65	LM25095		30	389	LT-1A
	1200	56	74.0	1.15	575	SRF6S0.75T65	TBD		28	536	LT-1A
1	3600	56	74.0	1.15	575	SRF2S1T65	LM25096		24	420	LT-1A
	1800	56	77.0	1.15	575	SRF4S1T65	LM25097		27	403	LT-1A
	1800	143T	82.5	1.25	575	SSF4P1T65	LM24109		36	452	LT-1B
	1200	145T	80.0	1.25	575	SSF6P1T65	TBD		37	588	LT-1B
	900	182T	72.0	1.15	575	AAF8S1T65	LM01655		64	861	LT-1A
	1 1/2	3600	56	80.0	1.15	575	SRF2S1.5T65	LM25098		25	461
3600		143T	82.5	1.25	575	SSF2P1.5T65	LM25102		34	486	LT-1B
1800		56H	80.0	1.15	575	SRF4S1.5T65	LM25099		30	428	LT-1A
1800		145T	84.0	1.15	575	SSF4P1.5T65	LM24142		48	431	LT-1B
1200		182T	86.5	1.25	575	AF6B1.5T65	LM17059		83	791	LT-1E
1200		182T	85.5	1.25	575	AF6P1.5T65	LM16379		83	669	LT-1B
900	184T	74.0	1.15	575	AF8S1.5T65	LM01405		71	1020	LT-1A	

Prices and data subject to change without notice.

Product numbers in red are STOCK items.

TEFC • 575 VOLT MOTORS

3-PHASE
FOOT MOUNT & C-FACE
1/3 TO 400 HP



FOOT MOUNT (cont'd)

HP	SYN RPM	Frame	FL Nom Eff (%)	SF	Volts	Model Number	Product Number	Notes (see page 306)	Approx Shpg Wght (lbs)	List Price	Mult Sym
2	3600	56H	80.0	1.15	575	SRF2S2T65	LM25100		39	\$516	LT-1A
	3600	145T	84.0	1.25	575	SSF2P2T65	LM25103		39	561	LT-1B
	1800	56H	82.5	1.15	575	SRF4S2T65	LM25101		40	455	LT-1A
	1800	145T	84.0	1.25	575	SSF4P2T65	LM24108	A	45	455	LT-1B
	1200	184T	87.5	1.25	575	AF6B2T65	LM17062	C	92	879	LT-1E
	1200	184T	86.5	1.25	575	AF6P2T65	LM16382		102	731	LT-1B
3	900	213T	75.5	1.15	575	AF8S2T65	LM01750		96	1210	LT-1A
	3600	182T	87.5	1.25	575	AF2B3T65	LM17063		83	896	LT-1E
		182T	85.5	1.25	575	AF2P3T65	LM16383		72	675	LT-1B
	1800	182T	89.5	1.25	575	AF4B3T65	LM17064		83	755	LT-1E
		182T	87.5	1.25	575	AF4P3T65	LM16384		77	609	LT-1B
	1200	213T	89.5	1.25	575	AF6B3T65	LM17065		127	1056	LT-1E
213T		87.5	1.25	575	AF6P3T65	LM16385		127	993	LT-1B	
5	900	215T	78.5	1.15	575	AF8S3T65	LM01695		119	1282	LT-1A
	3600	184T	88.5	1.25	575	AF2B5T65	LM17066		92	993	LT-1E
		184T	87.5	1.25	575	AF2P5T65	LM16386		174	822	LT-1B
	1800	184T	90.2	1.25	575	AF4B5T65	LM17067		87	884	LT-1E
		184T	87.5	1.25	575	AF4P5T65	LM16387		92	703	LT-1B
	1200	215T	89.5	1.25	575	AF6B5T65	LM17068		138	1466	LT-1E
215T		87.5	1.25	575	AF6P5T65	LM16388		155	1276	LT-1B	
7 1/2	900	254T	81.5	1.15	575	AF8S5T65	LM01662		165	1800	LT-1A
	3600	213T	91.0	1.25	575	AF2B7.5T65	LM17069		127	1206	LT-1E
		213T	88.5	1.25	575	AF2P7.5T65	LM16389		143	1306	LT-1B
	1800	213T	91.0	1.25	575	AF4B7.5T65	LM17070		127	1162	LT-1E
		213T	89.5	1.25	575	AF4P7.5T65	LM16391		160	1085	LT-1B
	1200	254T	91.0	1.25	575	AF6B7.5T65	LM17071		209	2008	LT-1E
		254T	89.5	1.25	575	AF6P7.5T65	LM16392		209	1759	LT-1B
	900	256T	82.5	1.15	575	AF8S7.5T65	LM01876		211	2130	LT-1A
10	3600	215T	91.0	1.25	575	AF2B10T65	LM17072		138	1465	LT-1E
		215T	89.5	1.25	575	AF2P10T65	LM16394		138	1542	LT-1B
	1800	215T	91.0	1.25	575	AF4B10T65	LM17073		138	1465	LT-1E
		215T	89.5	1.25	575	AF4P10T65	LM16395		138	1120	LT-1B
	1200	256T	91.0	1.25	575	AF6B10T65	LM17074		236	2532	LT-1E
		256T	89.5	1.25	575	AF6P10T65	LM16397		386	2218	LT-1B
15	3600	254T	91.7	1.25	575	AF2B15T65	LM17075		209	2008	LT-1E
		254T	90.2	1.25	575	AF2P15T65	LM16398		209	1711	LT-1B
	1800	254T	92.4	1.25	575	AF4B15T65	LM17076		209	1800	LT-1E
		254T	91.0	1.25	575	AF4P15T65	LM16400		240	1607	LT-1B
	1200	284T	92.4	1.25	575	AF6B15T65	LM17077	C	363	3391	LT-1E
		284T	90.2	1.25	575	AF6P15T65	LM16401	C	369	2907	LT-1C
20	3600	256T	91.7	1.25	575	AF2B20T65	LM17078		236	2391	LT-1E
		256T	90.2	1.25	575	AF2P20T65	LM16403		290	2031	LT-1B
	1800	256T	93.0	1.25	575	AF4B20T65	LM17079	C	275	2259	LT-1E
		256T	91.0	1.25	575	AF4P20T65	LM15919		236	1905	LT-1B
	1200	286T	93.0	1.25	575	AF6B20T65	LM17080	C	408	4453	LT-1E
		286T	90.2	1.25	575	AF6P20T65	LM16404	C	408	3424	LT-1C
25	3600	284TS	93.0	1.25	575	AF2B25TS65	LM17081		363	3315	LT-1E
		284TS	91.7	1.25	575	AF2P25TS65	LM16406		410	2808	LT-1C
	1800	284T	94.1	1.25	575	AF4B25T65	LM17082	C	363	2991	LT-1E
		284T	92.4	1.25	575	AF4P25T65	LM16407	C	320	2705	LT-1C
	1200	324T	93.0	1.25	575	SF6B25T65Y	LM14409	C	504	5077	LT-1E
		324T	91.7	1.25	575	SF6P25T65Y	LM14397	C	504	4357	LT-1C

Prices and data subject to change without notice.

Product numbers in red are STOCK items.



TEFC • 575 VOLT MOTORS

**3-PHASE
FOOT MOUNT & C-FACE
1/3 TO 400 HP**

FOOT MOUNT (cont'd)

HP	SYN RPM	Frame	FL Nom Eff (%)	SF	Volts	Model Number	Product Number	Notes (see page 306)	Approx Shpg Wght (lbs)	List Price	Mult Sym
30	3600	286TS	93.6	1.25	575	AF2B30TS65Y	LM20085		485	\$3726	LT-1E
	3600	286TS	91.0	1.25	575	AF2P30TS65Y	LM19594		408	3187	LT-1C
	1800	286T	94.5	1.25	575	AF4B30T65Y	LM20086	C	408	3938	LT-1E
	1800	286T	92.4	1.25	575	AF4P30T65Y	LM19595	C	585	3044	LT-1C
	1200	326T	92.4	1.25	575	SF6B30T65Y	LM14412	C	558	5618	LT-1E
	1200	326T	91.7	1.25	575	SF6P30T65Y	LM14400	C	570	5133	LT-1C
40	3600	324TS	94.1	1.25	575	SF2B40TS65Y	LM14407		504	4711	LT-1E
	3600	324TS	91.7	1.25	575	SF2P40TS65Y	LM14395		504	4074	LT-1C
	1800	324T	94.1	1.25	575	SF4B40T65Y	LM14408	C	504	4530	LT-1E
	1800	324T	93.0	1.15	575	SF4P40T65Y	LM14396	C	504	3918	LT-1C
	1200	364T	94.5	1.25	575	SF6B40T65Y	LM18368	C	765	6589	LT-1E
	1200	364T	93.0	1.15	575	SF6P40T65Y	LM18365		765	5641	LT-1C
50	3600	326TS	94.1	1.25	575	SF2B50TS65Y	LM14410		558	5980	LT-1E
	3600	326TS	92.4	1.25	575	SF2P50TS65Y	LM14398		558	5170	LT-1C
	1800	326T	95.0	1.25	575	SF4B50T65Y	LM14411	C	558	5436	LT-1E
	1800	326T	93.0	1.25	575	SF4P50T65Y	LM14399	C	558	4399	LT-1C
	1200	365T	94.5	1.25	575	SF6B50T65Y	LM18374	C	822	8237	LT-1E
	1200	365T	93.0	1.25	575	SF6P50T65Y	LM18371	C	822	7054	LT-1C
60	3600	364TS	95.0	1.25	575	SF2B60TS65Y	LM18370		765	7415	LT-1E
	3600	364TS	93.0	1.25	575	SF2P60TS65Y	LM18367		765	6347	LT-1C
	1800	364T	95.0	1.25	575	SF4B60T65Y	LM18369	C	765	7249	LT-1E
	1800	364T	93.6	1.25	575	SF4P60T65Y	LM18366		765	6367	LT-1C
	1200	404T	94.5	1.15	575	SF6B60T65Y	LM18289	C	918	9679	LT-1E
	1200	404T	93.6	1.15	575	SF6P60T65Y	LM18288		918	8094	LT-1D
75	3600	365TS	95.0	1.25	575	SF2B75TS65Y	LM18376		822	9554	LT-1E
	3600	365TS	93.0	1.25	575	SF2P75TS65Y	LM18373		822	8182	LT-1C
	1800	365T	95.0	1.15	575	SF4B75T65Y	LM18375	C	822	9472	LT-1E
	1800	365T	94.1	1.25	575	SF4P75T65Y	LM18372		822	8030	LT-1C
	1200	405T	94.5	1.15	575	SF6B75T65Y	LM18293		1002	12563	LT-1E
	1200	405T	93.6	1.15	575	SF6P75T65Y	LM18294		1002	10504	LT-1D
100	3600	405TS	95.8	1.15	575	SF2B100TS65Y	LM18291		1002	13427	LT-1E
	3600	405TS	94.1	1.15	575	SF2P100TS65Y	LM18290		1002	11195	LT-1D
	1800	405T	95.4	1.15	575	SF4B100T65Y	LM18307	C	1002	11942	LT-1E
	1800	405T	94.5	1.15	575	SF4P100T65Y	LM18292		1002	9702	LT-1D
	1200	444T	95.4	1.15	575	SF6B100T65Y	LM15121	C	1351	16055	LT-1E
	1200	444T	94.1	1.15	575	SF6P100T65Y	LM15080		1351	12915	LT-1D
125	3600	444TS	95.8	1.15	575	SF2B125TS65Y	LM15119		1351	17215	LT-1E
	3600	444TS	94.5	1.15	575	SF2P125TS65Y	LM15078		1351	13635	LT-1D
	1800	444T	96.2	1.15	575	SF4B125T65Y	LM15120	C	1351	15945	LT-1E
	1800	444T	94.5	1.15	575	SF4P125T65Y	LM15079	C	1351	12968	LT-1D
	1200	445T	95.8	1.15	575	SF6B125T65Y	LM15127	C	1531	19481	LT-1E
	1200	445T	94.1	1.15	575	SF6P125T65Y	LM15086	C	1504	15427	LT-1D
150	3600	445TS	96.2	1.15	575	SF2B150TS65Y	LM15125		1531	21308	LT-1E
	3600	445TS	94.5	1.15	575	SF2P150TS65Y	LM15084		1504	16875	LT-1D
	1800	445T	96.2	1.15	575	SF4B150T65Y	LM15126	C	1531	18667	LT-1E
	1800	445T	95.0	1.15	575	SF4P150T65Y	LM15085	C	1531	15042	LT-1D
	1200	445T	95.8	1.15	575	SF6B150T65Y	LM15124	C	1531	22832	LT-1E
	1200	445T	95.0	1.15	575	SF6P150T65Y	LM15083	C	1504	18081	LT-1D
200	3600	445TS	96.2	1.15	575	SF2B200TS65Y	LM15122		1531	27001	LT-1E
	3600	445TS	95.0	1.15	575	SF2P200TS65Y	LM15081		1504	21384	LT-1D
	1800	445T	96.2	1.15	575	SF4B200T65Y	LM15123	C	1531	22472	LT-1E
	1800	445T	95.0	1.15	575	SF4P200T65Y	LM15082	C	1531	18603	LT-1D
	1200	447T	95.8	1.15	575	SF6B200T65Y	LM15131	C	1812	26094	LT-1E
	1200	447T	95.0	1.15	575	SF6P200T65Y	LM15091	C	1812	20665	LT-1D

Prices and data subject to change without notice.

Product numbers in red are STOCK items.

TEFC • 575 VOLT MOTORS

3-PHASE
FOOT MOUNT & C-FACE
1/3 TO 400 HP



FOOT MOUNT (cont'd)

HP	SYN RPM	Frame	FL Nom Eff (%)	SF	Volts	Model Number	Product Number	Notes (see page 306)	Approx Shpg Wght (lbs)	List Price	Mult Sym
250	3600	447TS	96.2	1.15	575	SF2B250TS65Y	LM15128		1812	\$32620	LT-1E
	3600	447TS	95.4	1.00	575	SF2P250TS65Y	LM15087		1812	25832	LT-1D
	1800	447T	96.2	1.15	575	SF4B250T65Y	LM15130		1812	26818	LT-1E
	1800	447T	95.0	1.15	575	SF4P250T65Y	LM15092		1812	22205	LT-1D
	1200	449T	95.4	1.00	575	SF6B250T65Y	LM15137		2185	32611	LT-1E
	1200	449T	95.0	1.15	575	SF6P250T65Y	LM15099		2185	25832	LT-1D
300	3600	449TS	96.2	1.15	575	S449F2B300TS65Y	LM15138		2185	40607	LT-1E
	3600	449TS	95.4	1.15	575	S449F2P300TS65Y	LM15098		2185	31572	LT-1D
	1800	447T	96.2	1.15	575	SF4B300T65Y	LM15129		1812	29356	LT-1E
	1800	447T	95.4	1.00	575	SF4P300T65Y	LM15089		1812	23215	LT-1D
350	3600	449TS	95.8	1.15	575	SF2B350TS65Y	LM15135		2185	44218	LT-1E
	3600	449TS	95.4	1.00	575	SF2P350TS65Y	LM15096		2185	35014	LT-1D
	1800	449T	96.2	1.15	575	SF4B350T65Y	LM15136		2185	36244	LT-1E
	1800	449T	95.4	1.15	575	SF4P350T65Y	LM15097		2185	25247	LT-1D
400	3600	449TS	95.8	1.00	575	SF2B400TS65Y	LM15132		2185	54001	LT-1E
	3600	449TS	95.4	1.00	575	SF2P400TS65Y	LM15093		2185	42767	LT-1D
	1800	449T	96.2	1.15	575	SF4B400T65Y	LM15133		2185	41678	LT-1E
	1800	449T	95.4	1.00	575	SF4P400T65Y	LM15094		2185	31800	LT-1D

C-FACE WITH FEET

HP	SYN RPM	Frame	FL Nom Eff (%)	SF	Volts	Model Number	Product Number	Notes (see page 306)	Approx Shpg Wght (lbs)	List Price	Mult Sym
1/3	1800	56C	65.5	1.15	575	SRF4S0.33TC65	LM25042		21	\$357	LT-1A
1/2	3600	56C	66.5	1.15	575	SRF2S0.5TC65	LM25043		22	364	LT-1A
	1800	56C	70.0	1.15	575	SRF4S0.5TC65	LM24355		18	402	LT-1A
3/4	3600	56C	74.0	1.15	575	SRF2S0.75TC65	LM25044		24	399	LT-1A
	1800	56C	75.5	1.15	575	SRF4S0.75TC65	LM24354		21	429	LT-1A
1	3600	56C	74.0	1.15	575	SRF2S1TC65	LM25045		25	460	LT-1A
	1800	56C	77.0	1.15	575	SRF4S1TC65	LM25046		26	444	LT-1A
	1800	143TC	82.5	1.25	575	SSF4P1TC65	LM25051		41	464	LT-1B
1 1/2	3600	143TC	82.5	1.25	575	SSF2P1.5TC65	LM25052		41	529	LT-1B
	3600	56C	80.0	1.15	575	SRF2S1.5TC65	LM25047		41	470	LT-1A
	1800	56HC	80.0	1.15	575	SRF4S1.5TC65	LM25048		31	470	LT-1A
	1800	145TC	84.0	1.15	575	SSF4P1.5TC65	LM24158		49	472	LT-1B
	1200	182TC	86.5	1.25	575	AF6B1.5TC65	LM17175		95	853	LT-1E
	1200	182TC	85.5	1.25	575	AF6P1.5TC65	LM16582		95	732	LT-1B
2	3600	56HC	80.0	1.15	575	SRF2S2TC65	LM25049		31	557	LT-1A
	3600	145TC	84.0	1.25	575	SSF2P2TC65	LM25053		40	603	LT-1B
	1800	56HC	82.5	1.15	575	SRF4S2TC65	LM25050		50	477	LT-1A
	1800	145TC	84.0	1.15	575	SSF4P2TC65	LM24137	A	47	496	LT-1B
	1200	184TC	87.5	1.25	575	AF6B2TC65	LM17179	C	104	942	LT-1E
1200	184TC	86.5	1.25	575	AF6P2TC65	LM16587		104	795	LT-1B	
3	3600	182TC	87.5	1.25	575	AF2B3TC65	LM17180		95	925	LT-1E
	3600	182TC	85.5	1.25	575	AF2P3TC65	LM16589		95	740	LT-1B
	1800	182TC	89.5	1.25	575	AF4B3TC65	LM17181		95	819	LT-1E
	1800	182TC	87.5	1.25	575	AF4P3TC65	LM16590		95	670	LT-1B
	1200	213TC	89.5	1.25	575	AF6B3TC65	LM17182		138	1127	LT-1E
	1200	213TC	87.5	1.25	575	AF6P3TC65	LM16591		138	1013	LT-1B

Prices and data subject to change without notice.

Product numbers in red are STOCK items.



TEFC • 575 VOLT MOTORS

**3-PHASE
FOOT MOUNT & C-FACE
1/3 TO 400 HP**

C-FACE WITH FEET (cont'd)

HP	SYN RPM	Frame	FL Nom Eff (%)	SF	Volts	Model Number	Product Number	Notes (see page 306)	Approx Shpg Wght (lbs)	List Price	Mult Sym
5	3600	184TC	88.5	1.25	575	AF2B5TC65	LM17183		104	\$1055	LT-1E
	3600	184TC	87.5	1.25	575	AF2P5TC65	LM16592		104	884	LT-1B
	1800	184TC	89.5	1.25	575	AF4B5TC65	LM17184		104	950	LT-1E
	1800	184TC	87.5	1.25	575	AF4P5TC65	LM16593		104	766	LT-1B
	1200	215TC	89.5	1.25	575	AF6B5TC65	LM17185		149	1538	LT-1E
	1200	215TC	87.5	1.25	575	AF6P5TC65	LM16594		149	1349	LT-1B
7 1/2	3600	213TC	91.0	1.25	575	AF2B7.5TC65	LM17186		138	1278	LT-1E
	3600	213TC	88.5	1.25	575	AF2P7.5TC65	LM16595		175	1118	LT-1B
	1800	213TC	91.0	1.25	575	AF4B7.5TC65	LM17187		138	1232	LT-1E
	1800	213TC	89.5	1.25	575	AF4P7.5TC65	LM16596		127	1104	LT-1B
	1200	254TC	91.0	1.25	575	AF6B7.5TC65	LM17188		221	2104	LT-1E
	1200	254TC	89.5	1.25	575	AF6P7.5TC65	LM16597		221	1855	LT-1B
10	3600	215TC	91.0	1.25	575	AF2B10TC65	LM17189		149	1596	LT-1E
	3600	215TC	89.5	1.25	575	AF2P10TC65	LM16598		210	1459	LT-1B
	1800	215TC	91.0	1.25	575	AF4B10TC65	LM17190		149	1537	LT-1E
	1800	215TC	89.5	1.25	575	AF4P10TC65	LM16599		200	1171	LT-1B
	1200	256TC	91.0	1.25	575	AF6B10TC65	LM17191		248	2630	LT-1E
	1200	256TC	89.5	1.25	575	AF6P10TC65	LM16600		200	2314	LT-1B
15	3600	254TC	91.7	1.25	575	AF2B15TC65	LM17192		221	2105	LT-1E
	3600	254TC	90.2	1.25	575	AF2P15TC65	LM16601		185	1957	LT-1B
	1800	254TC	92.4	1.25	575	AF4B15TC65	LM17193		221	1896	LT-1E
	1800	254TC	91.0	1.25	575	AF4P15TC65	LM16602		260	1702	LT-1B
	1200	284TC	92.4	1.25	575	AF6B15TC65	LM17194	C	370	3560	LT-1E
	1200	284TC	90.2	1.25	575	AF6P15TC65	LM16603	C	500	3075	LT-1C
20	3600	256TC	91.7	1.25	575	AF2B20TC65	LM17195		248	2487	LT-1E
	3600	256TC	90.2	1.25	575	AF2P20TC65	LM16604		248	2126	LT-1B
	1800	256TC	93.0	1.25	575	AF4B20TC65	LM17196	C	248	2354	LT-1E
	1800	256TC	91.0	1.25	575	AF4P20TC65	LM16605		300	2002	LT-1B
	1200	286TC	93.0	1.25	575	AF6B20TC65	LM17197	C	415	4618	LT-1E
	1200	286TC	90.2	1.25	575	AF6P20TC65	LM16606	C	415	3591	LT-1C
25	3600	284TSC	93.0	1.25	575	AF2B25TSC65	LM17198		370	3483	LT-1E
	3600	284TSC	91.0	1.25	575	AF2P25TSC65	LM16607		370	2874	LT-1C
	1800	284TC	94.1	1.25	575	AF4B25TC65	LM17199	C	370	3157	LT-1E
	1800	284TC	92.4	1.25	575	AF4P25TC65	LM16608	C	370	2714	LT-1C
	1200	324TC	93.0	1.25	575	SF6B25TC65Y	LM14563	C	514	5354	LT-1E
	1200	324TC	91.7	1.25	575	SF6P25TC65Y	LM14551	C	500	4634	LT-1C
30	3600	286TSC	93.0	1.25	575	AF2B30TSC65Y	LM20087		415	3891	LT-1E
	3600	286TSC	91.0	1.25	575	AF2P30TSC65Y	LM19596		415	3354	LT-1C
	1800	286TC	94.5	1.25	575	AF4B30TC65Y	LM20088	C	415	4102	LT-1E
	1800	286TC	92.4	1.25	575	AF4P30TC65Y	LM19597	C	415	3211	LT-1C
	1200	326TC	92.4	1.25	575	SF6B30TC65Y	LM14566	C	568	5894	LT-1E
	1200	326TC	91.7	1.25	575	SF6P30TC65Y	LM14554	C	580	5135	LT-1C
40	3600	324TSC	94.1	1.25	575	SF2B40TSC65Y	LM14561		514	4988	LT-1E
	3600	324TSC	91.7	1.25	575	SF2P40TSC65Y	LM14549		514	4350	LT-1C
	1800	324TC	94.1	1.25	575	SF4B40TC65Y	LM14562	C	514	4806	LT-1E
	1800	324TC	93.0	1.25	575	SF4P40TC65Y	LM14550	C	518	4196	LT-1C
	1200	364TC	94.5	1.25	575	SF6B40TC65Y	LM20035	C	777	7034	LT-1E
	1200	364TC	93.0	1.15	575	SF6P40TC65Y	LM19598		777	6084	LT-1C
50	3600	326TSC	94.1	1.25	575	SF2B50TSC65Y	LM14564		568	6256	LT-1E
	3600	326TSC	92.4	1.25	575	SF2P50TSC65Y	LM14552		568	5449	LT-1C
	1800	326TC	95.0	1.25	575	SF4B50TC65Y	LM14565	C	568	5713	LT-1E
	1800	326TC	93.0	1.25	575	SF4P50TC65Y	LM14553	C	568	4685	LT-1C
	1200	365TC	94.5	1.25	575	SF6B50TC65Y	LM20036	C	834	8681	LT-1E
	1200	365TC	93.0	1.25	575	SF6P50TC65Y	LM19599	C	834	7498	LT-1C

Prices and data subject to change without notice.

Product numbers in red are STOCK items.

TEFC • 575 VOLT MOTORS

3-PHASE
FOOT MOUNT & C-FACE
1/3 TO 400 HP



C-FACE WITH FEET (cont'd)

HP	SYN RPM	Frame	FL Nom Eff (%)	SF	Volts	Model Number	Product Number	Notes (see page 306)	Approx Shpg Wght (lbs)	List Price	Mult Sym
60	3600	364TSC	95.0	1.25	575	SF2B60TSC65Y	LM20037		777	\$7858	LT-1E
	3600	364TSC	93.0	1.25	575	SF2P60TSC65Y	LM19600		777	6791	LT-1C
	1800	364TC	95.0	1.25	575	SF4B60TC65Y	LM20038	C	778	8187	LT-1E
	1800	364TC	93.6	1.25	575	SF4P60TC65Y	LM19603		778	6819	LT-1C
	1200	404TC	94.5	1.15	575	SF6B60TC65Y	LM20039	C	934	10205	LT-1E
	1200	404TC	93.6	1.15	575	SF6P60TC65Y	LM19601		934	8621	LT-1D
75	3600	365TSC	95.0	1.25	575	SF2B75TSC65Y	LM20040		834	9999	LT-1E
	3600	365TSC	93.0	1.25	575	SF2P75TSC65Y	LM19602		834	8626	LT-1C
	1800	365TC	95.0	1.15	575	SF4B75TC65Y	LM20041	C	834	9915	LT-1E
	1800	365TC	94.1	1.25	575	SF4P75TC65Y	LM15921		835	8474	LT-1C
	1200	405TC	94.5	1.15	575	SF6B75TC65Y	LM20042		1018	13088	LT-1E
	1200	405TC	93.6	1.15	575	SF6P75TC65Y	LM19604		1018	11031	LT-1D
100	3600	405TSC	95.8	1.15	575	SF2B100TSC65Y	LM20043		1018	13952	LT-1E
	3600	405TSC	93.6	1.15	575	SF2P100TSC65Y	LM19605		1018	11722	LT-1D
	1800	405TC	95.4	1.15	575	SF4B100TC65Y	LM20044	C	1001	12471	LT-1E
	1800	405TC	94.5	1.15	575	SF4P100TC65Y	LM19606	C	1018	10242	LT-1D
	1200	444TC	95.4	1.15	575	SF6B100TC65Y	LM20045	C	1372	16709	LT-1E
	1200	444TC	94.1	1.15	575	SF6P100TC65Y	LM19607		1372	13569	LT-1D
125	3600	444TSC	95.8	1.15	575	SF2B125TSC65Y	LM20046		1372	17868	LT-1E
	3600	444TSC	94.5	1.15	575	SF2P125TSC65Y	LM19608		1372	14287	LT-1D
	1800	444TC	96.2	1.15	575	SF4B125TC65Y	LM20047	C	1372	16600	LT-1E
	1800	444TC	94.5	1.15	575	SF4P125TC65Y	LM19609	C	1372	13638	LT-1D
	1200	445TC	95.8	1.15	575	SF6B125TC65Y	LM20048	C	1552	20134	LT-1E
	1200	445TC	94.1	1.15	575	SF6P125TC65Y	LM19610	C	1525	16078	LT-1D
150	3600	445TSC	96.2	1.15	575	SF2B150TSC65Y	LM20049		1552	22056	LT-1E
	3600	445TSC	94.5	1.15	575	SF2P150TSC65Y	LM19611		1525	17529	LT-1D
	1800	445TC	96.2	1.15	575	SF4B150TC65Y	LM20050	C	1552	19321	LT-1E
	1800	445TC	95.0	1.15	575	SF4P150TC65Y	LM19612	C	1525	15706	LT-1D
	1200	445TC	95.8	1.15	575	SF6B150TC65Y	LM20051	C	1552	23487	LT-1E
	1200	445TC	95.0	1.15	575	SF6P150TC65Y	LM19613	C	1525	18735	LT-1D
200	3600	445TSC	96.2	1.15	575	SF2B200TSC65Y	LM20052		1552	27654	LT-1E
	3600	445TSC	95.0	1.15	575	SF2P200TSC65Y	LM19614		1525	22037	LT-1D
	1800	445TC	96.2	1.15	575	SF4B200TC65Y	LM20053	C	1552	23124	LT-1E
	1800	445TC	95.0	1.15	575	SF4P200TC65Y	LM17685	C	1537	19286	LT-1D
	1200	447TC	95.8	1.15	575	SF6B200TC65Y	LM20054	C	1833	26793	LT-1E
	1200	447TC	95.0	1.15	575	SF6P200TC65Y	LM19615	C	1833	21365	LT-1D
250	3600	447TSC	96.2	1.15	575	SF2B250TSC65Y	LM20055		1833	33317	LT-1E
	3600	447TSC	95.4	1.00	575	SF2P250TSC65Y	LM19616		1833	26531	LT-1D
	1800	447TC	96.2	1.15	575	SF4B250TC65Y	LM20056		1833	27518	LT-1E
	1800	447TC	95.0	1.15	575	SF4P250TC65Y	LM19617		1833	22936	LT-1D
300	3600	449TSC	96.2	1.15	575	S449F2B300TSC65Y	LM20058		2206	41307	LT-1E
	3600	449TSC	95.4	1.15	575	S449F2P300TSC65Y	LM19619		2206	32271	LT-1D
	1800	447TC	96.2	1.15	575	SF4B300TC65Y	LM20059		1833	30056	LT-1E
	1800	447TC	95.4	1.00	575	SF4P300TC65Y	LM19620		1833	23966	LT-1D
350	3600	449TSC	95.8	1.15	575	SF2B350TSC65Y	LM20061		2206	44917	LT-1E
	3600	449TSC	95.4	1.00	575	SF2P350TSC65Y	LM19623		2206	35715	LT-1D
	1800	449TC	96.2	1.15	575	SF4B350TC65Y	LM20062		2206	36943	LT-1E
	1800	449TC	95.4	1.15	575	SF4P350TC65Y	LM19624		2206	24795	LT-1D
400	3600	449TSC	95.8	1.00	575	SF2B400TSC65Y	LM20063		2206	54700	LT-1E
	3600	449TSC	95.4	1.00	575	SF2P400TSC65Y	LM19625		2206	43466	LT-1D
	1800	449TC	96.2	1.15	575	SF4B400TC65Y	LM20064		2206	42379	LT-1E
	1800	449TC	95.4	1.00	575	SF4P400TC65Y	LM19626		2206	32551	LT-1D

Prices and data subject to change without notice.

Product numbers in red are STOCK items.