



ODP

**208, 230/460 & 460 VOLTS • 3-PHASE
FOOT MOUNT AND C-FACE
1/4 TO 500 HP**

Signature Series **MOTORS**

Frames 48 - 256T

Features:

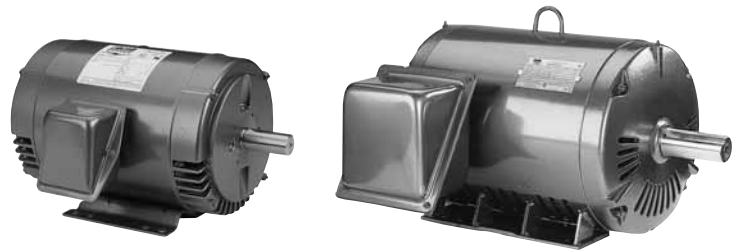
- Industry leading 1.25 service factor*
- Two levels of premium efficiency - P efficiency codes meet and B efficiency codes exceed the energy efficiency requirements of the United States and Canada.
- Nameplated for 50 Hz and 208 V/60 Hz Operation – See “Notes” column.
- Continuous Duty
- Inverter-Rated
- Premium Insulation Systems –
48 & 56 frames: Class B
143T-215T frames: Class F
- UL Recognized Component Listing and CSA
- Warranty (sine-wave power & inverter power) –
48 & 56 frames: 18 months from date of manufacture and 12 months from date of installation which ever period expires first.
143T-256T frames: 30 months from date of manufacture and 24 months from date of installation which ever period expires first.

Applications:

For use where water and dust exposure is minimal. Ideally suited for use on pumps, compressors, blowers, fans and other standard industrial applications.



* P and B efficiency codes. Information subject to change without notice.



ULTIMATE E® MOTORS

Frames 284T - 449T

Features:

- Industry leading 1.25 service factor through 200 HP*
- Superior speed-torque curves - most models* nameplated Design B & C - see “Notes” column.
- Two levels of premium efficiency - P efficiency codes meet and B efficiency codes exceed the energy efficiency requirements of the United States and Canada.
- Nameplated for 50 Hz and 208 V/60 Hz Operation – See “Notes” column.
- Continuous Duty
- Inverter-Rated
- Premium Class F Plus Insulation system
- Y-delta start capability frames 284T-449T
- UL Recognized Component Listing and CSA certified
- Warranty (sine-wave power) –
284T-449T frames: 42 months from date of manufacture and 36 months from date of installation which ever period expires first.
Inverter Power: 30 months from date of manufacture and 24 months from date of installation which ever period expires first.
- Shielded ball bearing for direct coupled applications. Contact your local sales office for belted applications.

FOOT MOUNT

HP	SYN RPM	Frame	FL Nom Eff (%)	SF	Volts	Model Number	Product Number	Notes (see page 306)	Approx Shpg Wght (lbs)	List Price	Mult Sym	
1/4	1800	48	62.0	1.35	230/460	SPD4S0.25T61	LM24866	H, V	19	\$256	LT-1A	
1/3	3600	56	66.0	1.35	230/460	SRD2S0.33T61	LM24867	H, V	18	261	LT-1A	
	1800	56	67.0	1.35	230/460	SRD4S0.33T61	LM24152	H, W	15	276	LT-1A	
	1200	56	62.0	1.35	230/460	SRD6S0.33T61	LM24868	H, W	19	439	LT-1A	
1/2	3600	56	66.0	1.25	230/460	SRD2S0.5T61	LM24869	H, V	22	276	LT-1A	
	1800	56	70.0	1.25	230/460	SRD4S0.5T61	LM24098	H, W	17	318	LT-1A	
	1200	56	68.0	1.25	230/460	SRD6S0.5T61	LM24146	H	22	484	LT-1A	
3/4	3600	56	74.0	1.25	230/460	SRD2S0.75T61	LM24870	H, V	21	326	LT-1A	
	1800	56	75.5	1.25	230/460	SRD4S0.75T61	LM24099	H, V	20	353	LT-1A	
	1200	56	76.5	1.15	230/460	SRD6S0.75T61	LM24162	H, W	26	524	LT-1A	
1	3600	56	74.0	1.25	230/460	SRD2S1T61	LM24155	H, W	24	378	LT-1A	
	1800	56	76.5	1.15	230/460	SRD4S1T61	LM24111	H	22	367	LT-1A	
	1800	143T	84.0	1.15	230/460	SSD4B1T61	LM24871	H, V	35	535	LT-1E	
	1800	143T	82.5	1.25	230/460	SSD4P1T61	LM24116	H, S, W	34	382	LT-1B	
	1200	56H	75.5	1.15	230/460	SRD6S1T61	LM24872	H, W	29	499	LT-1A	
	1200	145T	80.0	1.25	230/460	SSD6P1T61	LM24123	K, V	48	542	LT-1B	
	900	182T	72.0	1.15	230/460	SSD8S1T61	LM24873	H	55	675	LT-1A	
	1 1/2	3600	56	80.0	1.15	230/460	SRD2S1.5T61	LM24874	H, W	23	423	LT-1A
		3600	143T	82.5	1.25	230/460	SSD2P1.5T61	LM24150	H, V	28	456	LT-1B
1800		56H	80.0	1.15	230/460	SRD4S1.5T61	LM24117	H, W	28	389	LT-1A	
1800		145T	85.5	1.15	230/460	SSD4B1.5T61	LM24875	H, V	45	560	LT-1E	
1800		145T	84.0	1.25	230/460	SSD4P1.5T61	LM24101	H, V	40	404	LT-1B	
1200		182T	84.0	1.15	230/460	SSD6P1.5T61	LM24876	D - G130010	80	639	LT-1B	
900		184T	77.0	1.15	230/460	SSD8S1.5T61	LM24238	K	88	819	LT-1A	

Prices and data subject to change without notice.

Product numbers in red are STOCK items.

ODP
208, 230/460 & 460 VOLTS • 3-PHASE
FOOT MOUNT AND C-FACE
1/4 TO 500 HP



FOOT MOUNT (cont'd)

HP	SYN RPM	Frame	FL Nom Eff (%)	SF	Volts	Model Number	Product Number	Notes (see page 306)	Approx Shpg Wght (lbs)	List Price	Mult Sym	
2	3600	56H	80.0	1.15	230/460	SRD2S2T61	LM24877	H	25	\$495	LT-1A	
	3600	145T	84.0	1.25	230/460	SSD2P2T61	LM24100	H	28	537	LT-1B	
	1800	56H	81.5	1.15	230/460	SRD4S2T61	LM24106	H	36	419	LT-1A	
	1800	145T	85.5	1.25	230/460	SSD4B2T61	LM24169	C, H, S, W	48	634	LT-1E	
	1800	145T	84.0	1.25	230/460	SSD4P2T61	LM24082	H, W	44	435	LT-1B	
	1200	184T	85.5	1.25	230/460	SSD6P2T61	LM24237	D - G130012	74	625	LT-1B	
	900	213T	80.0	1.15	230/460	SSD8S2T61	LM24225	H	106	1077	LT-1A	
3	3600	56H	84.0	1.15	230/460	SRD2S3T61	LM24878	H	33	472	LT-1A	
	3600	145T	84.0	1.25	230/460	SSD2P3T61	LM24120	H, W	33	492	LT-1B	
	1800	182T	89.5	1.25	230/460	SSD4B3T61	LM24222	D - G131519	56	648	LT-1E	
	1800	182T	86.5	1.25	230/460	SSD4P3T61AP21	LM24177	S, X	83	475	LT-1B	
	1200	213T	86.5	1.25	230/460	SSD6P3T61	LM24200	K, V	104	888	LT-1B	
900	215T	78.5	1.15	230/460	SSD8S3T61	LM24228	H, Q	134	1282	LT-1A		
5	3600	182T	86.6	1.25	230/460	SSD2P5T61	LM24239	D - G130282	88	553	LT-1B	
	1800	184T	89.5	1.25	230/460	SSD4B5T61	LM24202	D - 131520	91	726	LT-1E	
	1800	184T	87.5	1.25	230/460	SSD4P5T61AP21	LM24172	K, V	87	527	LT-1B	
	1200	215T	87.5	1.25	230/460	SSD6P5T61	LM24244	K, V	135	965	LT-1B	
	900	254T	82.5	1.15	230/460	SSD8S5T61	LM24241	S	175	1772	LT-1A	
7 1/2	3600	184T	87.5	1.15	230/460	SSD2P7.5T61	LM24181	D - G130284	88	762	LT-1B	
	1800	213T	91.0	1.25	230/460	SSD4B7.5T61	LM24194	H, V	125	1022	LT-1E	
	1800	213T	88.5	1.15	230/460	SSD4P7.5T61AP21	LM24173	H, S, V	121	747	LT-1B	
	1200	254T	88.5	1.25	230/460	SSD6P7.5T61	LM24214	K, V	150	1193	LT-1B	
	900	256T	84.0	1.15	230/460	SSD8S7.5T61	LM24243	H	167	2254	LT-1A	
10	3600	213T	88.5	1.25	230/460	SSD2P10T61	LM24174	H, W	138	955	LT-1B	
	1800	215T	91.0	1.25	230/460	SSD4B10T61	LM24193	H, V	155	1141	LT-1E	
	1800	215T	89.5	1.15	230/460	SSD4P10T61AP21	LM24171	H, S	138	917	LT-1B	
	1200	256T	90.2	1.25	230/460	SSD6P10T61	LM24233	K, W	221	1543	LT-1B	
15	3600	215T	90.2	1.25	230/460	SSD2P15T61	LM24178	H, W	135	1277	LT-1B	
	1800	254T	93.0	1.25	230/460	CCD4B15T61	LM24190	H, V	300	2056	LT-1E	
	1800	254T	91.0	1.25	230/460	SSD4P15T61	LM24175	H, W	215	1327	LT-1B	
	1200	284T	91.7	1.25	230/460	CCD6B15T61Y	LM31244		420	2572	LT-1E	
	1200	284T	90.2	1.25	230/460	CCD6P15T61Y	LM29574		350	2184	LT-1C	
20	3600	254T	91.0	1.25	230/460	SSD2P20T61	LM24187	H, W	161	1607	LT-1B	
	1800	256T	92.4	1.25	230/460	CCD4B20T61	LM24199	H, S, V	350	1965	LT-1E	
	1800	256T	91.0	1.25	230/460	SSD4P20T61	LM24179	A, H, W	233	1667	LT-1B	
	1200	286T	91.0	1.25	230/460	CCD6P20T61Y	LM29575		375	3027	LT-1C	
	1200	286T	92.4	1.25	230/460	CCD6B20T61Y	LM30273		462	3089	LT-1E	
	25	3600	256T	91.0	1.25	230/460	SSD2P25T61	LM24184	H, Q	200	1957	LT-1B
25	1800	284T	93.0	1.25	230/460	CCD4B25T61Y	LM29576		350	2711	LT-1E	
	1800	284T	91.7	1.25	230/460	CCD4P25T61Y	LM30118		348	2240	LT-1C	
	1800	284TS	91.7	1.25	230/460	CCD4P25TS61Y	LM29937		348	2240	LT-1C	
	1200	324T	92.4	1.25	230/460	SD6B25T61Y	LM13809	C, K, S	469	4095	LT-1E	
	1200	324T	91.7	1.25	230/460	SD6P25T61Y	LM13749	C, K	469	5277	LT-1C	
	30	3600	284TS	93.0	1.25	230/460	SD2B30TS61Y	LM13966	H, M	348	4862	LT-1E
	3600	284TS	91.0	1.25	230/460	SD2P30TS61Y	LM13954	H, Q	348	3586	LT-1C	
3600	284T	91.0	1.25	230/460	SD2P30T61Y	LM20099	H, Q	348	3679	LT-1C		
30	1800	286T	93.6	1.25	230/460	CCD4B30T61Y	LM29577		400	3127	LT-1	
	1800	286T	92.4	1.25	230/460	CCD4P30T61Y	LM29923		400	2597	LT-1C	
	1800	286TS	92.4	1.25	230/460	CCD4P30TS61Y	LM29935		400	2597	LT-1C	
	1200	326T	93.6	1.25	230/460	SD6B30T61Y	LM13810	C, K, Q	522	5690	LT-1E	
	1200	326T	92.4	1.25	230/460	SD6P30T61Y	LM13750	C, K, Q	522	5457	LT-1C	

Prices and data subject to change without notice.

Product numbers in red are STOCK items.



ODP

**208, 230/460 & 460 VOLTS • 3-PHASE
FOOT MOUNT AND C-FACE
1/4 TO 500 HP**

FOOT MOUNT (cont'd)

HP	SYN RPM	Frame	FL Nom Eff (%)	SF	Volts	Model Number	Product Number	Notes (see page 306)	Approx Shpg Wght (lbs)	List Price	Mult Sym	
40	3600	286TS	93.6	1.25	230/460	SD2B40TS61Y	LM13969	H, N	389	\$5152	LT-1E	
	3600	286TS	91.7	1.25	230/460	SD2P40TS61Y	LM13957	H, Q	389	3953	LT-1C	
	3600	286T	91.7	1.25	230/460	SD2P40T61Y	LM18536	H, Q	389	3953	LT-1C	
	1800	324T	93.6	1.25	230/460	SD4B40T61Y	LM13811	C, P, S	469	5619	LT-1E	
	1800	324T	93.0	1.25	230/460	SD4P40T61Y	LM13751	C, H, M	469	3398	LT-1C	
	1800	324TS	93.0	1.25	230/460	SD4P40TS61Y	LM18540	C, H, M	469	3398	LT-1C	
	1200	364T	94.1	1.25	230/460	SD6B40T61Y	LM13924	C, P	712	6511	LT-1E	
	1200	364T	93.0	1.25	230/460	SD6P40T61Y	LM14804	C, K, Q	712	5247	LT-1C	
	50	3600	324TS	94.1	1.25	230/460	SD2B50TS61Y	LM13812	H, M	469	5138	LT-1E
		3600	324TS	92.4	1.25	230/460	SD2P50TS61Y	LM13752	H, P	469	4645	LT-1C
		3600	324T	92.4	1.25	230/460	SD2P50T61Y	LM20098	H, P	469	4645	LT-1C
		1800	326T	95.0	1.25	230/460	SD4B50T61Y	LM13813	C, P, S	522	5670	LT-1E
1800		326T	93.0	1.25	230/460	SD4P50T61Y	LM12831	C, H, M	522	3796	LT-1C	
1800		326TS	93.0	1.25	230/460	SD4P50TS61Y	LM18542	C, H, M	522	3796	LT-1C	
1200		365T	94.5	1.25	230/460	SD6B50T61Y	LM13927	K	763	7350	LT-1E	
1200		365T	93.0	1.25	230/460	SD6P50T61Y	LM14807	C, K, Q	763	6122	LT-1C	
60		3600	326TS	94.5	1.25	230/460	SD2B60TS61Y	LM13814	H, M	522	5276	LT-1E
		3600	326TS	93.0	1.25	230/460	SD2P60TS61Y	LM13753	H, P	522	4576	LT-1C
		3600	326T	93.0	1.25	230/460	SD2P60T61Y	LM18543	H, P	522	4714	LT-1C
		1800	364T	95.0	1.25	230/460	SD4B60T61Y	LM14813	C, V, S	712	7748	LT-1E
	1800	364T	93.6	1.25	230/460	SD4P60T61Y	LM14803	H, N	712	4917	LT-1C	
	1800	364TS	93.6	1.25	230/460	SD4P60TS61Y	LM18725	H, N	712	4917	LT-1C	
	1200	404T	94.5	1.25	230/460	SD6B60T61Y	LM13944	C, K, P	882	8432	LT-1E	
	1200	404T	93.6	1.25	230/460	SD6P60T61Y	LM13934	K, S	882	7385	LT-1D	
	75	3600	364TS	94.5	1.25	230/460	SD2B75TS61Y	LM14812	H, S	712	8519	LT-1E
		3600	364TS	93.0	1.25	230/460	SD2P75TS61Y	LM14802	H, Q	712	7442	LT-1C
		3600	364T	93.0	1.25	230/460	SD2P75T61Y	LM18731	H, Q	712	7442	LT-1C
		1800	365T	95.0	1.25	230/460	SD4B75T61Y	LM14815	C, H, M	763	7930	LT-1E
1800		365T	94.1	1.25	230/460	SD4P75T61Y	LM14806	H, Q	763	5152	LT-1C	
1800		365TS	94.1	1.25	230/460	SD4P75TS61Y	LM18727	H, Q	763	5142	LT-1C	
1200		405T	94.5	1.25	230/460	SD6B75T61Y	LM13947	P, S	958	10812	LT-1E	
1200		405T	93.6	1.25	230/460	SD6P75T61Y	LM13937	K, Q	958	8791	LT-1D	
100		3600	365TS	95.0	1.25	230/460	SD2B100TS61Y	LM14814	H, M	763	8910	LT-1E
		3600	365TS	93.0	1.25	230/460	SD2P100TS61Y	LM14805	H, Q	763	7465	LT-1C
		3600	365T	93.0	1.25	230/460	SD2P100T61Y	LM20096	H, Q	763	7465	LT-1C
		1800	404T	95.4	1.25	230/460	SD4B100T61Y	LM13943	P, S	882	8143	LT-1E
	1800	404T	94.1	1.25	230/460	SD4P100T61Y	LM13933	◆	882	6503	LT-1D	
	1800	404TS	94.1	1.25	230/460	SD4P100TS61Y	LM18729	◆	882	6503	LT-1D	
	1200	444T	95.4	1.15	460	SD6B100T64Y	LM13815	C, U	1277	12395	LT-1E	
	1200	444T	94.1	1.15	460	SD6P100T64Y	LM13754	U	1277	9856	LT-1D	
	125	3600	404TS	95.0	1.25	230/460	SD2B125TS61Y	LM13942	H, M	882	11453	LT-1E
		3600	404TS	93.6	1.25	230/460	SD2P125TS61Y	LM13932	H, M	882	9066	LT-1D
		3600	404T	93.6	1.25	230/460	SD2P125T61Y	LM20097	H, M	882	9066	LT-1D
		1800	405T	95.4	1.25	230/460	SD4B125T61Y	LM13946	C, H, M	958	9248	LT-1E
1800		405T	94.5	1.25	230/460	SD4P125T61Y	LM13936	H, N	958	7488	LT-1D	
1800		405TS	94.5	1.25	230/460	SD4P125TS61Y	LM18748	H, N	958	7488	LT-1D	
1200		445T	95.4	1.15	460	SD6B125T64Y	LM13816	U	1438	13439	LT-1E	
1200		445T	94.1	1.15	460	SD6P125T64Y	LM13755	C, U	1938	10642	LT-1D	
150		3600	405TS	95.4	1.25	230/460	SD2B150TS61Y	LM13945	H	958	13573	LT-1E
		3600	405TS	93.6	1.25	230/460	SD2P150TS61Y	LM13935	H, N	958	10525	LT-1D
		1800	444T	95.8	1.25	460	SD4B150T64Y	LM13817	C, M	1277	12355	LT-1E
		1800	444T	95.0	1.25	460	SD4P150T64Y	LM13756	C, T	1277	10079	LT-1D
	1800	444TS	95.0	1.25	460	SD4P150TS64Y	LM18752	C, T	1277	10079	LT-1D	
	1200	447T	95.8	1.15	460	SD6B150T64Y	LM16236	C, T	1745	16532	LT-1E	
	1200	445T	95.4	1.15	460	SD6B150T64Y	LM13818	C, U	1438	16855	LT-1E	
	1200	445T	94.5	1.15	460	SD6P150T64Y	LM13757	C	1438	12714	LT-1D	

Prices and data subject to change without notice.
+ Discontinued

Product numbers in red are STOCK items.

ODP
208, 230/460 & 460 VOLTS • 3-PHASE
FOOT MOUNT AND C-FACE
1/4 TO 500 HP



FOOT MOUNT (cont'd)

HP	SYN RPM	Frame	FL Nom Eff (%)	SF	Volts	Model Number	Product Number	Notes (see page 306)	Approx Shpg Wght (lbs)	List Price	Mult Sym
200	3600	444TS	95.8	1.25	460	SD2B200TS64Y	LM13819	M	1277	\$16635	LT-1E
	3600	444TS	94.5	1.25	460	SD2P200TS64Y	LM13758	N	1277	13174	LT-1D
	1800	445T	96.2	1.25	460	SD4B200T64Y	LM13820	C, T, S	1438	15196	LT-1E
	1800	445T	95.0	1.25	460	SD4P200T64Y	LM13759	C, N	1449	11801	LT-1D
	1800	445TS	95.0	1.25	460	SD4P200TS64Y	LM18724	C, N	1449	11801	LT-1D
	1200	449T	95.8	1.15	460	SD6B200T64Y	LM16239	C, U	2112	19798	LT-1E
	1200	447T	95.4	1.15	460	SD6B200T64Y	LM13821	C, U	1745	18853	LT-1E
	1200	447T	94.5	1.15	460	SD6P200T64Y	LM13760	C	1745	14929	LT-1D
	1200	449T	94.5	1.15	460	SD6P200T64Y	LM16228	C, U	2112	14929	LT-1D
	250	3600	445TS	95.8	1.15	460	SD2B250TS64Y	LM13822	N	1438	22182
3600		445TS	94.5	1.15	460	SD2P250TS64Y	LM13761	U	1438	17740	LT-1D
1800		445T	96.2	1.15	460	SD4B250T64Y	LM13823	N	1438	21279	LT-1E
1800		447T	96.2	1.15	460	SD4B250T64Y	LM16235	M	1745	21692	LT-1E
1800		445T	95.4	1.15	460	SD4P250T64Y	LM13762	S	1438	16362	LT-1D
1800		445TS	95.4	1.15	460	SD4P250TS64Y	LM15466	S	1438	16362	LT-1D
1800		445T	94.5	1.00	460	SD4S250T64Y	LM04479		1380	12510	LT-1A
1200		447T	95.4	1.00	460	SD6B250T64Y	LM13824		1745	25383	LT-1E
1200		449T	95.4	1.15	460	SD6B250T64Y	LM17958		2112	26655	LT-1E
300		3600	447TS	95.8	1.15	460	SD2B300TS64Y	LM13825		1745	26132
	3600	447TS	95.0	1.15	460	SD2P300TS64Y	LM13764	S	1745	20694	LT-1D
	1800	447T	96.2	1.15	460	SD4B300T64Y	LM13826	N	1745	22024	LT-1E
	1800	449T	96.5	1.15	460	SD4B300T64Y	LM16238	N	2112	23124	LT-1E
	1800	447T	95.4	1.15	460	SD4P300T64Y	LM13765	S	1745	17274	LT-1D
	1800	449T	95.4	1.15	460	SD4P300T64Y	LM16227	N	2112	18520	LT-1D
	1800	447TS	95.4	1.15	460	SD4P300TS64Y	LM22758		1745	17274	LT-1D
350	3600	447TS	95.8	1.15	460	SD2B350TS64Y	LM13828	N	1745	29581	LT-1E
	3600	449TS	95.8	1.15	460	SD2B350TS64Y	LM16237	N	2112	31059	LT-1E
	3600	447TS	95.0	1.15	460	SD2P350TS64Y	LM13767	U	1745	23425	LT-1D
	3600	449TS	95.0	1.15	460	SD2P350TS64Y	LM16226	U	2112	24599	LT-1D
	1800	447T	96.2	1.15	460	SD4B350T64Y	LM13829	S	1745	27660	LT-1E
	1800	449T	96.2	1.15	460	SD4B350T64Y	LM17957	U	2112	29044	LT-1E
	1800	447T	95.0	1.00	460	SD4P350T64Y	LM13768		1745	19878	LT-1D
	1800	449T	95.4	1.15	460	SD4P350T64Y	LM17954	U	2112	21274	LT-1D
	1800	447TS	95.0	1.00	460	SD4P350TS64Y	LM15159		1745	19878	LT-1D
	400	3600	449TS	96.2	1.15	460	SD2B400TS64Y	LM13831	N	2112	34192
3600		449TS	95.4	1.15	460	SD2P400TS64Y	LM13770		2112	26499	LT-1D
1800		449T	95.8	1.15	460	SD4B400T64Y	LM13832	U	2112	33181	LT-1E
1800		449T	95.4	1.15	460	SD4P400T64Y	LM13771		2112	24834	LT-1D
1800		449TS	95.4	1.15	460	SD4P400TS64Y	LM22759		2112	24834	LT-1D
450	3600	449TS	95.8	1.15	460	CCD2B450TS64Y	TBD		2544	40775	LT-1E
	3600	449TS	95.8	1.00	460	CCD2P450TS64Y	TBD		2534	27555	LT-1D
	1800	449T	96.2	1.00	460	CCD4B450T64Y	TBD		2554	40775	LT-1E
	1800	449T	95.8	1.00	460	CCD4P450T64Y	LM30874		2554	27555	LT-1D
500	3600	449TS	96.5	1.15	460	CCD2B500TS64Y	TBD		2542	49336	LT-1E

C-FACE WITH FEET

HP	SYN RPM	Frame	FL Nom Eff (%)	SF	Volts	Model Number	Product Number	Notes (see page 306)	Approx Shpg Wght (lbs)	List Price	Mult Sym
1/3	1800	56C	67.0	1.35	230/460	SRD4S0.33TC61	LM24277	H, W	15	\$316	LT-1A
1/2	3600	56C	66.0	1.25	230/460	SRD2S0.5TC61	LM24879	H, V	18	318	LT-1A
	1800	56C	70.0	1.25	230/460	SRD4S0.5TC61	LM24880	H, W	17	358	LT-1A
	1200	56C	68.0	1.25	230/460	SRD6S0.5TC61	LM24881	H	33	525	LT-1A

Prices and data subject to change without notice.

Product numbers in red are STOCK items.



ODP

**208, 230/460 & 460 VOLTS • 3-PHASE
FOOT MOUNT AND C-FACE
1/4 TO 500 HP**

C-FACE WITH FEET (cont'd)

HP	SYN RPM	Frame	FL Nom Eff (%)	SF	Volts	Model Number	Product Number	Notes (see page 306)	Approx Shpg Wght (lbs)	List Price	Mult Sym
3/4	3600	56C	74.0	1.25	230/460	SRD2S0.75TC61	LM24882	H, V	21	\$368	LT-1A
	1800	56C	75.5	1.25	230/460	SRD4S0.75TC61	LM24267	H, V	20	395	LT-1A
	1200	56C	76.5	1.15	230/460	SRD6S0.75TC61	LM24883	H, W	26	565	LT-1A
1	3600	56C	74.0	1.25	230/460	SRD2S1TC61	LM24884	H, W	24	420	LT-1A
	1800	56C	76.5	1.15	230/460	SRD4S1TC61	LM24346	H	22	407	LT-1A
	1800	143TC	82.5	1.25	230/460	SSD4P1TC61	LM24344	H, S, W	34	454	LT-1B
	1200	56HC	75.5	1.15	230/460	SRD6S1TC61	LM24885	H, W	29	540	LT-1A
	1200	145TC	80.0	1.25	230/460	SSD6P1TC61	LM24886	K, V	48	583	LT-1B
1 1/2	3600	56C	80.0	1.15	230/460	SRD2S1.5TC61	LM24887	H, W	23	464	LT-1A
	3600	143TC	82.5	1.25	230/460	SSD2P1.5TC61	LM24888	S	28	497	LT-1B
	1800	56HC	80.0	1.15	230/460	SRD4S1.5TC61	LM24889	H, W	28	429	LT-1A
	1800	145TC	84.0	1.15	230/460	SSD4P1.5TC61	LM24343	H, V	40	477	LT-1B
	1200	182TC	84.0	1.15	230/460	SSD6P1.5TC61	LM24890	H, V	80	702	LT-1B
2	3600	56HC	80.0	1.15	230/460	SRD2S2TC61	LM24891	H	25	512	LT-1A
	3600	145TC	84.0	1.25	230/460	SSD2P2TC61	LM24892	H	28	578	LT-1B
	1800	56HC	81.5	1.15	230/460	SRD4S2TC61	LM24345	H	36	510	LT-1A
	1800	145TC	84.0	1.25	230/460	SSD4P2TC61	LM24272	H, W	44	510	LT-1B
	1200	184TC	85.5	1.25	230/460	SSD6P2TC61	LM24893	H, V	74	723	LT-1B
3	3600	56HC	84.0	1.15	230/460	SRD2S3TC61	LM24894	H	33	512	LT-1A
	3600	145TC	84.0	1.25	230/460	SSD2P3TC61	LM24895	H, W	33	533	LT-1B
	1800	182TC	86.5	1.25	230/460	SSD4P3TC61	LM24896	D - G130325	83	609	LT-1B
	1200	213TC	86.5	1.25	230/460	SSD6P3TC61	LM24897	K, V	104	877	LT-1B
5	3600	182TC	85.5	1.15	230/460	SSD2P5TC61	LM24898	H, V, D - G131249	83	640	LT-1B
	1800	184TC	87.5	1.25	230/460	SSD4P5TC61	LM24206	H, Q, D - G130327	93	682	LT-1B
	1200	215TC	87.5	1.25	230/460	SSD6P5TC61	LM24899	K, V	135	1038	LT-1B
7 1/2	3600	184TC	87.5	1.15	230/460	SSD2P7.5TC61	LM24205	J, Q, S, D - G131250	105	931	LT-1B
	1800	213TC	88.5	1.25	230/460	SSD4P7.5TC61	LM24240	H, V	115	879	LT-1B
	1200	254TC	88.5	1.25	230/460	SSD6P7.5TC61	LM24900	K, V	150	1288	LT-1B
10	3600	213TC	88.5	1.25	230/460	SSD2P10TC61	LM24901	H, W	138	1028	LT-1B
	1800	215TC	89.5	1.25	230/460	SSD4P10TC61	LM24902	S	138	1082	LT-1B
	1200	256TC	90.2	1.25	230/460	SSD6P10TC61	LM24903	K	221	1639	LT-1B
15	3600	215TC	90.2	1.15	230/460	SSD2P15TC61	LM24904	H, S	135	1349	LT-1B
	1800	254TC	91.0	1.25	230/460	SSD4P15TC61	LM24905	S	215	1421	LT-1B
	1200	284TC	91.7	1.25	230/460	CCD6B15TC61Y	LM31247		420	2739	LT-1E
1200	284TC	90.2	1.25	230/460	SD6P15TC61Y	LM17036	C, K, Q	355	2304	LT-1C	
20	3600	254TC	91.0	1.25	230/460	SSD2P20TC61	LM24906	V	161	1702	LT-1B
	1800	256TC	91.0	1.25	230/460	SSD4P20TC61	LM24907	A, S	233	1762	LT-1B
	1200	286TC	92.4	1.25	230/460	CCD6B20TC61Y	LM31248		462	3254	LT-1E
	1200	286TC	90.1	1.25	230/460	CCD6P20TC61Y	LM29938		375	2713	LT-1C
25	3600	256TC	91.0	1.25	230/460	SSD2P25TC61	LM24908	H, Q	207	2052	LT-1B
	1800	284TC	93.0	1.25	230/460	CCD4B25TC61Y	LM31245		430	2909	LT-1E
	1800	284TC	91.7	1.25	230/460	CCD4P25TC61Y	LM29580		350	2430	LT-1C
	1800	284TSC	91.7	1.25	230/460	CCD4P24TSC61Y	LM29934		350	2430	LT-1C
	1200	324TC	92.4	1.25	230/460	SD6B25TC61Y	LM14535	C, K, N	479	4420	LT-1E
	1200	324TC	92.4	1.25	230/460	SD6P25TC61Y	LM13774	C	479	5175	LT-1C
30	3600	284TSC	93.0	1.25	230/460	SD2B30TSC61Y	LM17382	H, M	355	3330	LT-1E
	3600	284TSC	91.0	1.25	230/460	SD2P30TSC61Y	LM15548	H, Q	355	3727	LT-1C
	1800	286TC	93.6	1.25	230/460	SD4B30TC61Y	LM31246		489	3330	LT-1E
	1800	286TC	92.4	1.25	230/460	CCD4P30TC61Y	LM29940		396	2794	LT-1C
	1800	286TSC	92.4	1.25	230/460	CCD4P30TSC61Y	LM29578		400	2794	LT-1C
	1200	326TC	93.6	1.25	230/460	SD6B30TC61Y	LM13836	C, K, Q	532	5073	LT-1E
	1200	326TC	92.4	1.25	230/460	SD6P30TC61Y	LM13775	C, K, Q	532	5420	LT-1C

Prices and data subject to change without notice.

Product numbers in red are STOCK items.

ODP
208, 230/460 & 460 VOLTS • 3-PHASE
FOOT MOUNT AND C-FACE
1/4 TO 500 HP



C-FACE WITH FEET (cont'd)

HP	SYN RPM	Frame	FL Nom Eff (%)	SF	Volts	Model Number	Product Number	Notes (see page 306)	Approx Shpg Wght (lbs)	List Price	Mult Sym
40	3600	286TSC	93.6	1.25	230/460	SD2B40TSC61Y	LM17384	H, N	396	\$5217	LT-1E
	3600	286TSC	91.7	1.25	230/460	SD2P40TSC61Y	LM15595	H, Q	396	4159	LT-1C
	1800	324TC	94.1	1.25	230/460	SD4B40TC61Y	LM13837	C, H, M	479	4204	LT-1E
	1800	324TC	93.0	1.25	230/460	SD4P40TC61Y	LM13776	C, H, M	479	3641	LT-1C
	1800	324TSC	93.0	1.25	230/460	SD4P40TSC61Y	LM16050	C, H, M	479	3641	LT-1C
	1200	364TC	94.1	1.25	230/460	SD6B40TC61Y	LM15571	C, P	724	7034	LT-1E
	1200	364TC	93.0	1.25	230/460	SD6P40TC61Y	LM15559	C, K, Q	724	5756	LT-1C
	3600	324TSC	94.1	1.25	230/460	SD2B50TSC61Y	LM13838	H, M	479	5184	LT-1E
	3600	324TSC	92.4	1.25	230/460	SD2P50TSC61Y	LM13777	H, P	479	4579	LT-1C
	1800	326TC	94.5	1.25	230/460	SD4B50TC61Y	LM13839	C, H, M	532	4857	LT-1E
1800	326TC	93.0	1.25	230/460	SD4P50TC61Y	LM13778	C, H, M	532	4118	LT-1C	
1800	326TSC	93.0	1.25	230/460	SD4P50TSC61Y	LM16054	C, H, M	532	4118	LT-1C	
1200	365TC	94.5	1.25	230/460	SD6B50TC61Y	LM15574	C, K, M	775	7880	LT-1E	
1200	365TC	93.0	1.25	230/460	SD6P50TC61Y	LM15561	C, K, Q	775	6640	LT-1C	
60	3600	326TSC	94.5	1.25	230/460	SD2B60TSC61Y	LM13840	H	532	5459	LT-1E
	3600	326TSC	93.0	1.25	230/460	SD2P60TSC61Y	LM13779	H, P	532	4773	LT-1C
	1800	364TC	95.0	1.25	230/460	SD4B60TC61Y	LM15570	C, H, M, V	724	7696	LT-1E
	1800	364TC	93.6	1.25	230/460	SD4P60TC61Y	LM15558	H, N	724	5198	LT-1C
	1800	364TSC	93.6	1.25	230/460	SD4P60TSC61Y	LM16057	H, N	724	5198	LT-1C
	1200	404TC	94.5	1.25	230/460	SD6B60TC61Y	LM17385	C, K, P	898	8729	LT-1E
	1200	404TC	93.6	1.25	230/460	SD6P60TC61Y	LM17043	K, Q	898	7788	LT-1D
	3600	364TSC	95.0	1.25	230/460	SD2B75TSC61Y	LM15569	H, M	724	8217	LT-1E
	3600	364TSC	93.0	1.25	230/460	SD2P75TSC61Y	LM15490	Q	724	7341	LT-1C
	1800	365TC	95.0	1.25	230/460	SD4B75TC61Y	LM15573	C, H, M	775	6502	LT-1E
1800	365TC	94.1	1.25	230/460	SD4P75TC61Y	LM15560	H, Q	775	5607	LT-1C	
1800	365TSC	94.1	1.25	230/460	SD4P75TSC61Y	LM16061	H, Q	775	5607	LT-1C	
1200	405TC	95.4	1.25	230/460	SD6B75TC61Y	LM17386	K, P	974	11148	LT-1E	
1200	405TC	93.6	1.25	230/460	SD6P75TC61Y	LM17044	K, Q	974	9894	LT-1D	
100	3600	365TSC	95.0	1.25	230/460	SD2B100TSC61Y	LM15572	H	775	9367	LT-1E
	3600	365TSC	93.0	1.25	230/460	SD2P100TSC61Y	LM15062	H, Q	775	7922	LT-1C
	1800	404TC	95.4	1.25	230/460	SD4B100TC61Y	LM17387	Q	898	8181	LT-1E
	1800	404TC	94.1	1.25	230/460	SD4P100TC61Y	LM17045	H, M, ♦	898	7046	LT-1D
	1800	404TSC	94.1	1.25	230/460	SD4P100TSC61Y	LM18751	H, ♦	898	7046	LT-1D
	1200	444TC	95.4	1.15	460	SD6B100TC64Y	LM13791	C, U	1298	13069	LT-1E
	1200	444TC	94.1	1.15	460	SD6P100TC64Y	LM13780		1298	10488	LT-1D
	3600	404TSC	95.0	1.25	230/460	SD2B125TSC61Y	LM17388	H, M	898	11994	LT-1E
	3600	404TSC	93.6	1.25	230/460	SD2P125TSC61Y	LM17046	H, M	898	9608	LT-1D
	1800	405TC	95.4	1.25	230/460	SD4B125TC61Y	LM17389	C, H, M	974	9790	LT-1E
1800	405TC	94.5	1.25	230/460	SD4P125TC61Y	LM17047	C, H, N	974	8032	LT-1D	
1800	405TSC	94.5	1.25	230/460	SD4P125TSC61Y	LM18746	H, N	974	8032	LT-1D	
1200	445TC	95.4	1.15	460	SD6B125TC64Y	LM13792	C	1459	14114	LT-1E	
150	3600	405TSC	95.4	1.25	230/460	SD2B150TSC61Y	LM17390	H	974	14117	LT-1E
	3600	405TSC	93.6	1.25	230/460	SD2P150TSC61Y	LM17048	H, N	974	11382	LT-1D
	1800	444TC	95.8	1.25	460	SD4B150TC64Y	LM13793	C, M	1298	13399	LT-1E
	1800	444TC	95.0	1.25	460	SD4P150TC64Y	LM13782	C, T	1298	10751	LT-1D
	1800	444TSC	95.0	1.25	460	SD4P150TSC64Y	LM18753	C, T	1298	10751	LT-1D
	1200	445TC	95.4	1.15	460	SD6B150TC64Y	LM13794	C, U	1459	16724	LT-1E
200	3600	444TSC	95.8	1.25	460	SD2B200TSC64Y	LM13795	M	1298	17302	LT-1E
	3600	444TSC	94.5	1.25	460	SD2P200TSC64Y	LM13784	N	1298	13840	LT-1D
	1800	445TC	96.2	1.25	460	SD4B200TC64Y	LM13796	C, M	1459	15712	LT-1E
	1800	445TC	95.0	1.25	460	SD4P200TC64Y	LM13785	C, N	1470	12459	LT-1D
	1800	445TSC	95.0	1.25	460	SD4P200TSC64Y	LM18754	C, N	1470	12459	LT-1D
	1200	447TC	95.4	1.15	460	SD6B200TC64Y	LM13797	C, U	1766	19760	LT-1E
	1200	447TC	94.5	1.15	460	SD6P200TC64Y	LM13786	C	1766	15798	LT-1D

Prices and data subject to change without notice.
 † Discontinued

Product numbers in red are STOCK items.

ODP • 30 TO 60 HZ CONSTANT TORQUE INVERTER DUTY



230/460 & 460 VOLTS • 3-PHASE
FOOT MOUNT & C-FACE
1/3 TO 400 HP

Features:

- 10:1 Constant torque speed range at continuous duty of 6-60 Hz.
- Variable torque speed range with open loop drive of 0-60 Hz.
- Constant horsepower speed range of 2x base speed (56-256T frames) or 1.5x base speed* (284T-449T frames).
- Ultimate Spike Defense™ Insulation System
- 1.00 service factor on PWM waveform,
1.15 service factor or better on sine-wave power.
- Precision dynamic balanced rotor assembly
- Thermal overload protection (Class F thermostats)
- Warranty: 42 months from date of manufacture and 36 months from date of installation which ever period expires first.
- Made in the U.S.A.



Applications:

For use in constant torque (conveyors, machine tools) or variable torque (pumps, fans) variable speed applications within the stated speed range of the motor.

* Actual speed not to exceed "RPM MAX" listed for specific motor.

FOOT MOUNT

HP	SYN RPM @ 60 Hz	RPM Max	Frame	FL Nom Eff (%)	Volts	Model Number	Product Number	Notes (see page 306)	Approx Shpg Wght (lbs)	List Price	Mult Sym
1	1800	5000	143T	82.5	230/460	SSD4P1T61Q40	LM21148	D	55	\$572	LS-1
1 1/2	1800	5000	145T	84.0	230/460	SSD4P1.5T61Q40	LM21151	D	68	597	LS-1
2	1800	5000	145T	84.0	230/460	SSD4P2T61Q40	LM21153	D	68	630	LS-1
3	1800	4800	182T	86.5	230/460	SSD4P3T61Q40	LM21157	D	82	714	LS-1
5	1800	4800	184T	87.5	230/460	SSD4P5T61Q40	LM21159		71	913	LS-1
7 1/2	1800	4600	213T	88.5	230/460	SSD4P7.5T61Q40	LM21162	D	141	1048	LS-1
10	1800	4600	215T	89.5	230/460	SSD4P10T61Q40	LM21165	D	168	1231	LS-1
	1200	4400	256T	90.2	230/460	SSD6P10T61Q40	LM21170	D	255	1887	LS-1
15	1800	4400	254T	91.0	230/460	SSD4P15T61Q40	LM21168	D	245	1759	LS-1
20	1800	4400	256T	91.0	230/460	SSD4P20T61Q40	LM21171		255	1946	LS-1
	1800	4000	284T	91.7	230/460	SD4P25T61YQ40	LM21174*	D	N/A	2556	LS-1
25	1800	4000	284T	91.7	230/460	CCD4P25T61YQ40	LM29579		350	2556	LS-1
	1800	4000	286T	92.4	230/460	SD4P30T61YQ40	LM21177*	D	N/A	2908	LS-1
30	1800	4000	286T	92.4	230/460	CCD4P30T61YQ40	LM29936		400	2908	LS-1
	1800	4000	324T	93.0	230/460	SD4P40T61YQ40	LM21180	D	469	3694	LS-1
40	1800	4000	324T	93.0	230/460	SD4P40T61YQ40	LM21180	D	469	3694	LS-1
50	1800	4000	326T	93.0	230/460	SD4P50T61YQ40	LM21118	D	522	4124	LS-1
75	1800	3800	365T	94.1	230/460	SD4P75T61YQ40	LM21124		763	5400	LS-1
100	1800	3600	404T	94.1	230/460	SD4P100T61YQ40	LM21127		882	6915	LS-1
125	1800	3600	405T	94.5	230/460	SD4P125T61YQ40	LM30727		958	7900	LS-1

Prices and data subject to change without notice.

* Contact your local sales office for availability.

Product numbers in red are STOCK items.