

Bravo® Helical-Worm  
Double Reduction

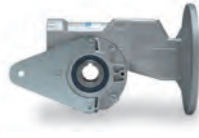
**HOLLOW OUTPUT SHAFT MOUNTED**

**DXHMQ**

**MOTORIZED  
QUILL INPUT**



**DXRHMQ**



**DXFHMQ**



Ratings: Pages 355-356  
Dimensions: Page 362

Ratings: Pages 355-356  
Dimensions: Page 376

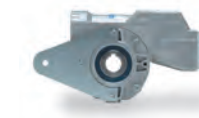
Ratings: Pages 355-356  
Dimensions: Page 364

**DXH**

**NON-  
MOTORIZED  
SOLID INPUT  
SHAFT**



**DXRH**



**DXFH**



Ratings: Pages 355-356  
Dimensions: Page 362

Ratings: Pages 355-356  
Dimensions: Page 376

Ratings: Pages 355-356  
Dimensions: Page 364

**SOLID OUTPUT SHAFT**

**DXMQ**

**MOTORIZED  
QUILL INPUT**



**DXRMQ**



(❖Non-Standard Option)

Ratings: Pages 355-356  
Dimensions: Page 376

**DXFMQ**



Ratings: Pages 355-356  
Dimensions: Page 365

Ratings: Pages 355-356  
Dimensions: Page 363

**DX**

**NON-  
MOTORIZED  
SOLID INPUT  
SHAFT**



**DXR**



(❖Non-Standard Option)

Ratings: Pages 355-356  
Dimensions: Page 376

**DXF**



Ratings: Pages 355-356  
Dimensions: Page 365

**MOUNTING ACCESSORIES**

Select the appropriate mounting accessories from this wide variety of options.



**REACTION  
ARM R**



**F FLANGE  
(SHORT FLANGE)**

❖ Non-Standard Option assemblies may be useful in certain applications. Please contact Factory with application details.

**DXFLHMQ**



Ratings: Pages 355-356  
Dimensions: Page 366

**DXTHMQ**



(⚡Non-Standard Option)  
Ratings: Pages 355-356  
Dimensions: Page 368

**DXUHMQ**



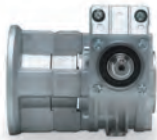
(⚡Non-Standard Option)  
Ratings: Pages 355-356  
Dimensions: Page 370

**DXJHMQ**



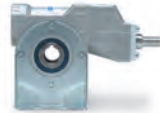
(⚡Non-Standard Option)  
Ratings: Pages 355-356  
Dimensions: Page 372

**DXFLH**



Ratings: Pages 355-356  
Dimensions: Page 366

**DXTH**



(⚡Non-Standard Option)  
Ratings: Pages 355-356  
Dimensions: Page 368

**DXUH**



(⚡Non-Standard Option)  
Ratings: Pages 355-356  
Dimensions: Page 370

**DXJH**



(⚡Non-Standard Option)  
Ratings: Pages 355-356  
Dimensions: Page 372

**DXFLMQ**



Ratings: Pages 355-356  
Dimensions: Page 367

**DXTMQ**



Ratings: Pages 355-356  
Dimensions: Page 369

**DXUMQ**



Ratings: Pages 355-356  
Dimensions: Page 371

**DXJMQ**



Ratings: Pages 355-356  
Dimensions: Page 373

**DXFL**



Ratings: Pages 355-356  
Dimensions: Page 367

**DXT**



Ratings: Pages 355-356  
Dimensions: Page 369

**DXU**



Ratings: Pages 355-356  
Dimensions: Page 371

**DXJ**



Ratings: Pages 355-356  
Dimensions: Page 373



**FL FLANGE**  
(LONG FLANGE)



**HORIZONTAL BASE**  
(WORM OVER ASSEMBLY)



**HORIZONTAL BASE**  
(WORM UNDER ASSEMBLY)



**HORIZONTAL BASE**  
(VERTICAL INPUT SHAFT)

## Grove Gear 500 Series Gear Reducer Model Number Nomenclature

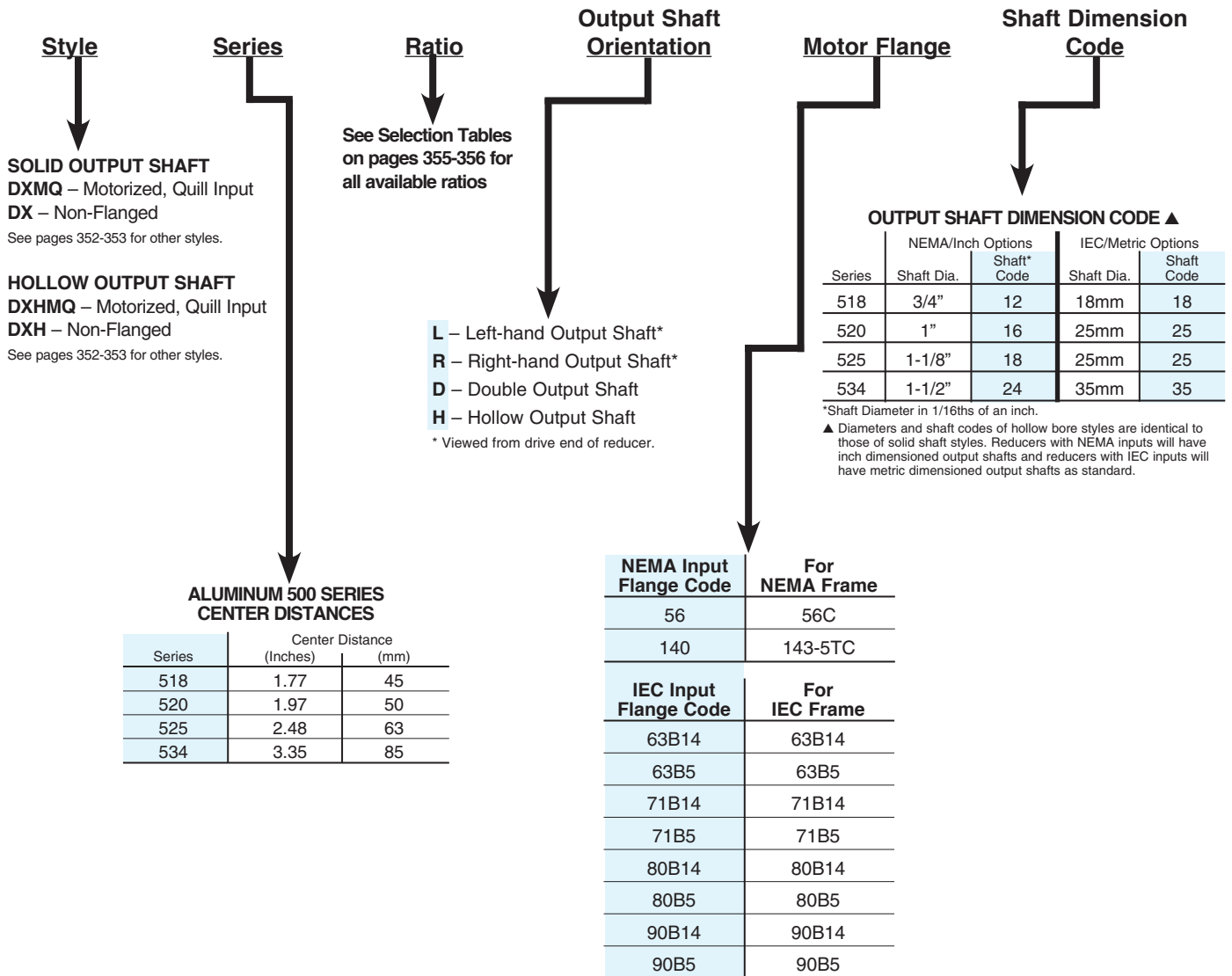
All stock and custom 500 series reducers are identified by a model number. The model number appears on the nameplate and describes pertinent features of the reducer. An example follows, along with a listing of the various letters and positions used.

NOTE: All reducers also have a catalog number—for example W5180001. Reducers and renewal parts should be ordered by catalog number. If a stock reducer has been factory modified by the addition of an optional base for example, the modification number T518, for example, is stamped in the blank column of the nameplate. Accessories that are field installed will not be noted on the nameplate.

Catalog numbers 5000 (for example, W5185000) and higher are custom reducers manufactured for a specific application. The machinery or equipment manufacturer should be contacted for replacement reducers. Renewal parts can be ordered from Grove Gear by catalog number.

## TYPICAL NAMEPLATE

GROVE GEAR			
MAX INPUT HP @ 1750 RPM	0.100	OUTPUT TORQUE (IN-LBS)	420
DESC.	DXMQ518258L5612		RATIO 258:1
CATALOG NO.			DATE CODE A04
GROVE GEAR UNION GROVE, WI. 53182		MOD	



## Sample Model Number

### Solid Shaft

Motorized Quill Input, Double Reduction Reducer, 1.77" Center Distance, 258:1 Ratio, Left Hand Output Shaft, and 5/8" Input Bore with NEMA 56C Flange.

<b>DXMQ</b>	<b>518</b>	<b>258</b>	<b>L</b>	<b>56</b>	<b>12</b>
Style	Series	Ratio	Output Shaft	Motor Input	Shaft Code

### Hollow Shaft

Motorized Quill Input, Double Reduction Reducer, 1.77" Center Distance, 258:1 Ratio, 3/4" Hollow Output Shaft, and 5/8" Input Bore with NEMA 56C Flange.

<b>DXHMQ</b>	<b>518</b>	<b>258</b>	<b>H</b>	<b>56</b>	<b>12</b>
Style	Series	Ratio	Output Shaft	Motor Input Flange	Shaft Code