

# GROVE GEAR

## *ELECTRA-GEAR*

*Geared To Be The Best*

**INTRODUCING...**

## **Grove Gear IronMan & Series**



"Patent Pending"

### **Product Highlights:**

- Green product: higher efficiency than worm gear reducers
- 90% operating efficiency
- 80% torque increase over worm reducers
- Interchangeable to major worm reducer brands
- Rapid Payback – Up to \$550 savings annually per motor horsepower

### **Standard Features:**

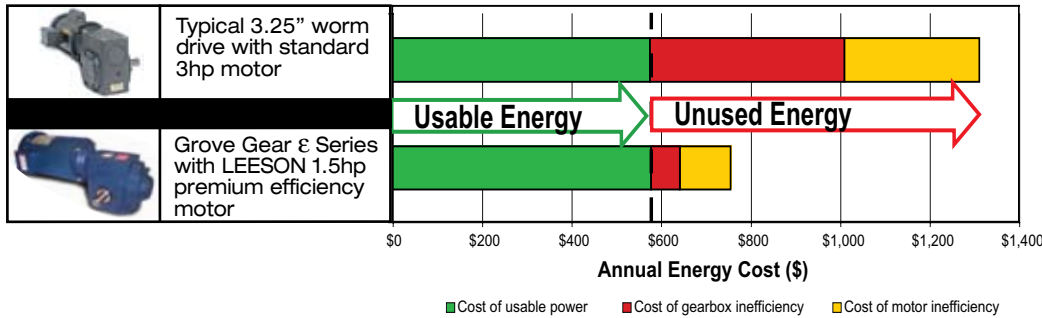
- 4 models available
- Ratios to 60:1, up to 450:1 with added ratio multiplier
- Available preassembled with LEESON WATTSaver® premium efficiency motors
- Factory-filled with premium synthetic lubricant - meets USDA Class H1 standards
  - Viton® double-lip seals



# Grove Gear IronMan E Series



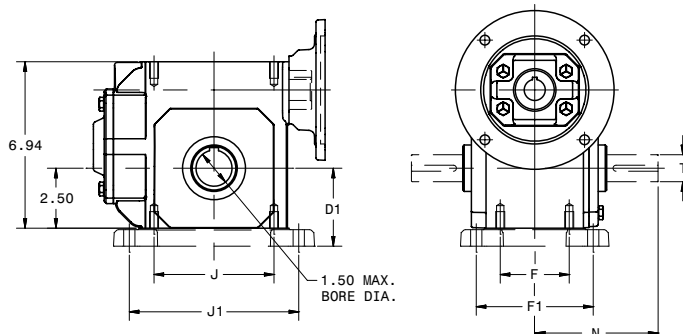
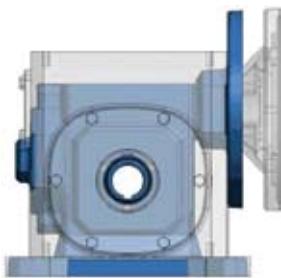
## Operating Cost Example\*



### Annual Savings\*

- 42% energy savings (\$550)
- 5,500 kW-hrs
- 3.9 tons of CO<sub>2</sub>\*\*

\*Based on 60:1 Ratio, 2600 in. lbs. output torque, 1800 rpm input, 24/5 duty cycle  
 \*\*  $7.18 \times 10^{-4}$  tons CO<sub>2</sub>/kW-hrs (source:www.epa.gov)



### Dimensions

The Grove Gear E Series has the torque density of a 3.25" CD worm gear drive in the design envelope of a 2.38" worm gear drive. With mounting base kits, the E Series can drop-in and replace up to four sizes of worm speed reducers.

	D1	T	F	J	F1	J1	N	Replaces Worm Gear CD
<b>HE24B</b>	2.50	1.125	2.88	5.00	-	-	5.14	2.38"
<b>HE24T</b>	3.25	1.125	-	-	4.88	7.06	5.14	
<b>HE26B</b>	2.94	1.250/1.125	3.38	6.38	-	-	5.63	2.63"
<b>HE26T</b>	3.69	1.250/1.125	-	-	5.25	8.00	5.63	
<b>HE30B</b>	3.25	1.250	4.00	7.00	-	-	6.75	3.00"
<b>HE30T</b>	4.00	1.250	-	-	5.88	8.44	6.75	
<b>HE32B</b>	3.50	1.500/1.375	4.00	5.50	-	-	7.06	3.25"
<b>HE32T</b>	4.38	1.500/1.375	-	-	6.13	9.50	7.06	

## Model Availability, Torque Ratings & Available Ratios

Model	Available	Torque Rating	Nominal Ratios
<b>HE35</b>	FALL 2010	1400 in.-lbs.	7, 10, 15, 20, 25, 30, 40, 50, 60
<b>HE45</b>	SPRING 2010	2600 in.-lbs.	7, 10, 15, 20, 25, 30, 40, 50, 60
<b>HE55</b>	SUMMER 2010	4500 in.-lbs.	7, 10, 15, 20, 25, 30, 40, 50, 60
<b>HE75</b>	WINTER 2010	8500 in.-lbs.	7, 10, 15, 20, 25, 30, 40, 50, 60



UNION GROVE, WISCONSIN 53182 U.S.A.  
 TEL (262) 878-1221 • FAX (262) 878-1968  
 www.grovetgear.com • sales.grovetgear@regalbeloit.com

